

# **PREPARED FOR SUCCESS**

**2005-2006**

**A Study of the Success of Adult Upgrading Graduates in the First Semester of Postsecondary Programs**

**Prepared by  
College Sector Committee for Adult Upgrading**

**August, 2006**

## OVERVIEW

The initial study published in January 2001 was funded jointly by the National Literacy Secretariat and the Ministry of Training, Colleges and Universities. It examined the postsecondary outcomes of students who had moved on from upgrading programs to further education in the college system from the fall of 1995 to January 2000.

This initial study tracked students from postsecondary admission through to graduation documenting success both in terms of retention and grade point average. “Students were tracked from the first semester of their studies to graduation, withdrawal or failure. Eighty three percent of these preparatory students graduated.” The 23 % of students who withdrew did so primarily for financial reasons. Sixty three percent of the students who withdrew did so during the first semester of their postsecondary studies.

The subsequent annual studies have focused exclusively on first semester results. It was decided to study the first semester to simplify the collection of data. Furthermore the initial study demonstrated conclusively that there is a high correlation between first semester success and eventual graduation. The initial study examined enrollment in 6 program categories: Business, General Arts and Sciences, Health, Technology, Trades and Other. Subsequent studies separated Social Services programs from the Other category. The initial report is available on line at [www.collegeupgrading.ca](http://www.collegeupgrading.ca).

## 2005-2006 Results

### PARTICIPATING COLLEGES ( Charts 1-4 )

The results documented here are for the Spring and Fall 2005, and Winter 2006 semesters.

Student success both in terms of GPA and retention continue to be outstanding. All 23 eligible colleges were able to provide data. (St Clair College has only recently begun providing postsecondary entry level upgrading. It is anticipated that St Clair will provide data for the 2006-2007 report.)

The number of students per college is detailed in chart four of the report. The number of students across the system moving on to postsecondary increased from 1,498 to 1,786 - an increase of 19%. These numbers do not represent the total number of upgrading students moving on to postsecondary. There is currently no process to track students who participate in postsecondary programming at a college different from the one where they completed their upgrading. In addition, Confederation College was only able to provide data for the Winter 2006 semester.

Data collection continues to be the most significant challenge to individual colleges. The College system is currently exploring the development of a data collection process which will enable colleges to track the movement of upgrading students to other colleges for postsecondary.

## **POSTSECONDARY PROGRAM SELECTION**

**(Charts 6-8)**

Participation in Health Sciences programs continues to be the most popular choice among adult upgrading students. Selection of a Business program is second, and Technology is third. Selection of a Trades or Skills program continues to be the least popular choice although participation has been steadily increasing since 2002-2003.

Fifty four percent of adult upgrading students enrolling in postsecondary select a four semester program. The balance of activity is split as follows: 28% for 1-2 semester programs and 18% for 5-8 semester programs. Clearly, the majority of adult upgrading graduates are prepared to make the necessary long term commitment of time required to achieve their educational goals.

## **MEASURES OF SUCCESS**

### **First Semester Pass Rates (Charts 9 – 16)**

The overall pass rate for students in all programs is 82%; 9% withdraw, principally because of financial reasons; 9% do not achieve the GPA required to continue in the postsecondary program of their choice.

### **Grade Point Averages (Charts 17 – 23)**

The average GPA for successful students by program category varies from a low of 2.86 to a high of 3.13.

### **Enrollment for Second Semester ( Charts 24 – 30 )**

In all program categories, 77% of eligible students enrolled in the second semester of their program. Four percent graduated. Only 3% changed programs.

### **Conclusion**

In terms of retention and GPA, students from adult upgrading programs who move on to postsecondary programming continue to demonstrate they are well prepared both academically and personally to succeed. Furthermore, the low rate of program changes indicates adult upgrading programs have helped them make the appropriate program selections.

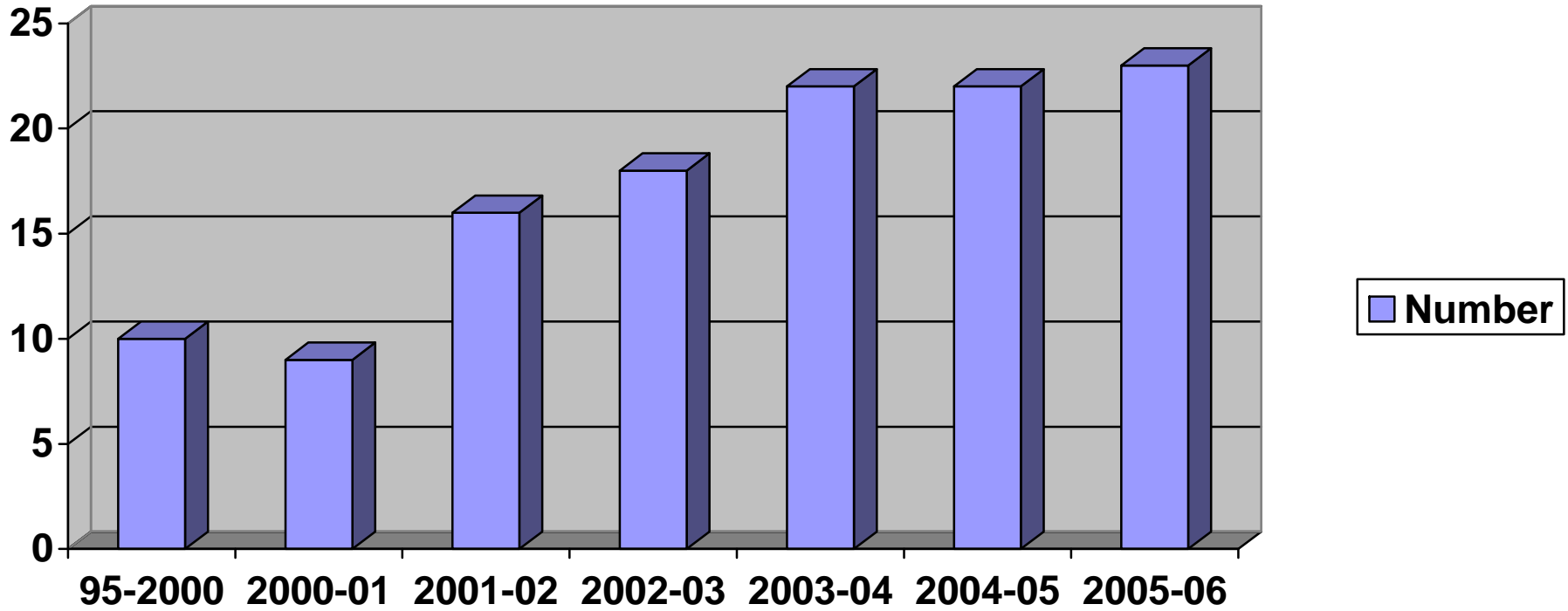
### **Final Thoughts**

The College Sector Committee hopes that this study helps demonstrate to current and potential college upgrading students, college personnel, funders and the community that time spent in college upgrading programs is a guaranteed investment in the future.

The CSC would also like to congratulate all those managers and support staff who collected this data in such a timely and efficient manner.

**CHART 1**

**NUMBER OF PARTICIPATING COLLEGES**



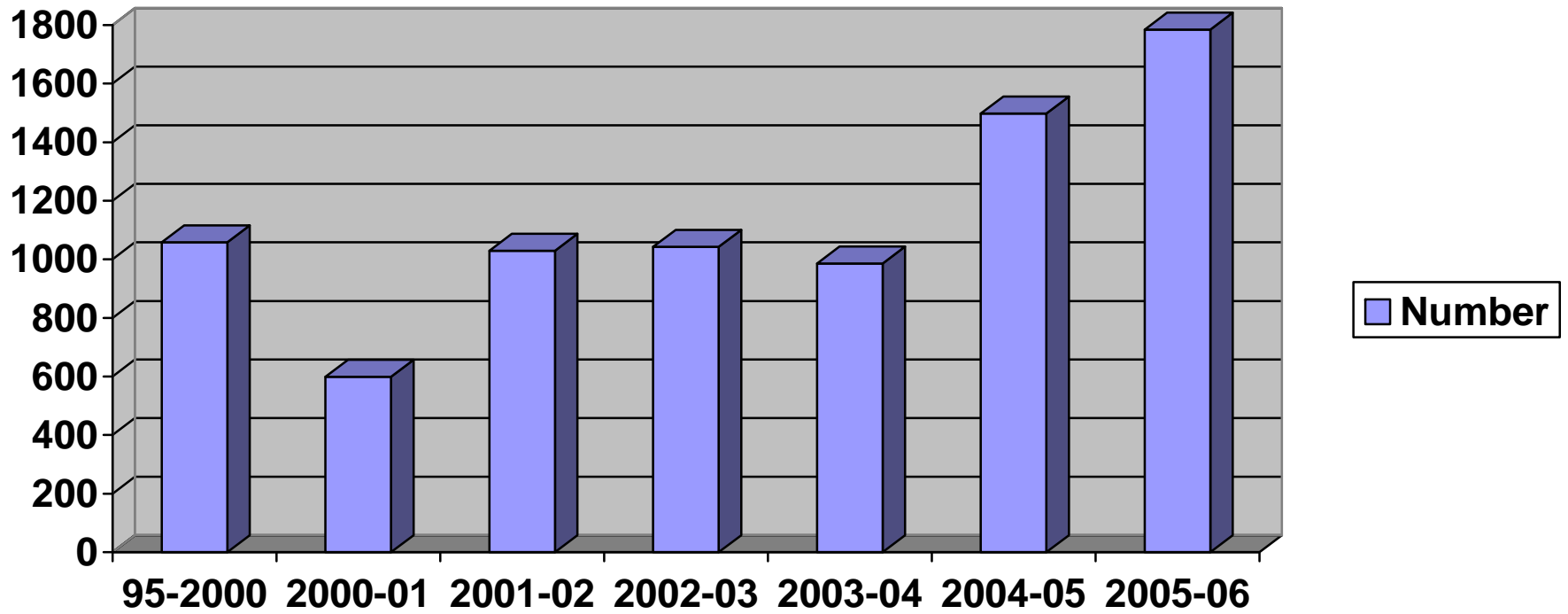
Years	1995-2000	2000-01	2001-02	2002-03	2003-04	2004-05	2005-06
Number of Colleges	10	9	16	18	22	22	23

**CHART 2****PARTICIPATING COLLEGES**

<b>College</b>	<b>1995-2000</b>	<b>2000-01</b>	<b>2001-02</b>	<b>2002-03</b>	<b>2003-04</b>	<b>2004-05</b>	<b>2005-06</b>
Algonquin				✓	✓	✓	✓
Boreal	✓		✓			✓	✓
Cambrian	✓	✓		✓	✓	✓	✓
Canadore	✓	✓	✓	✓	✓	✓	✓
Centennial				✓	✓	✓	✓
Conestoga	✓	✓	✓	✓	✓	✓	✓
Confederation			✓	✓	✓		✓
Durham	✓	✓	✓	✓	✓	✓	✓
Fanshawe		✓	✓	✓	✓	✓	✓
Fleming		✓	✓	✓	✓	✓	✓
George Brown					✓	✓	✓
Georgian		✓	✓		✓	✓	✓
Humber		✓	✓	✓	✓	✓	✓
La Cite				✓	✓	✓	✓
Lambton			✓	✓	✓	✓	✓
Loyalist	✓			✓	✓	✓	✓
Mohawk	✓		✓	✓	✓	✓	✓
Niagara	✓		✓	✓	✓	✓	✓
Northern			✓	✓	✓	✓	✓
Sault			✓		✓	✓	✓
Seneca				✓	✓	✓	✓
Sheridan	✓	✓	✓		✓	✓	✓
St. Clair	✓	N/A	N/A	N/A	N/A	N/A	N/A
St. Lawrence			✓	✓	✓	✓	✓

**CHART 3**

**NUMBER OF STUDENTS COMPARED**



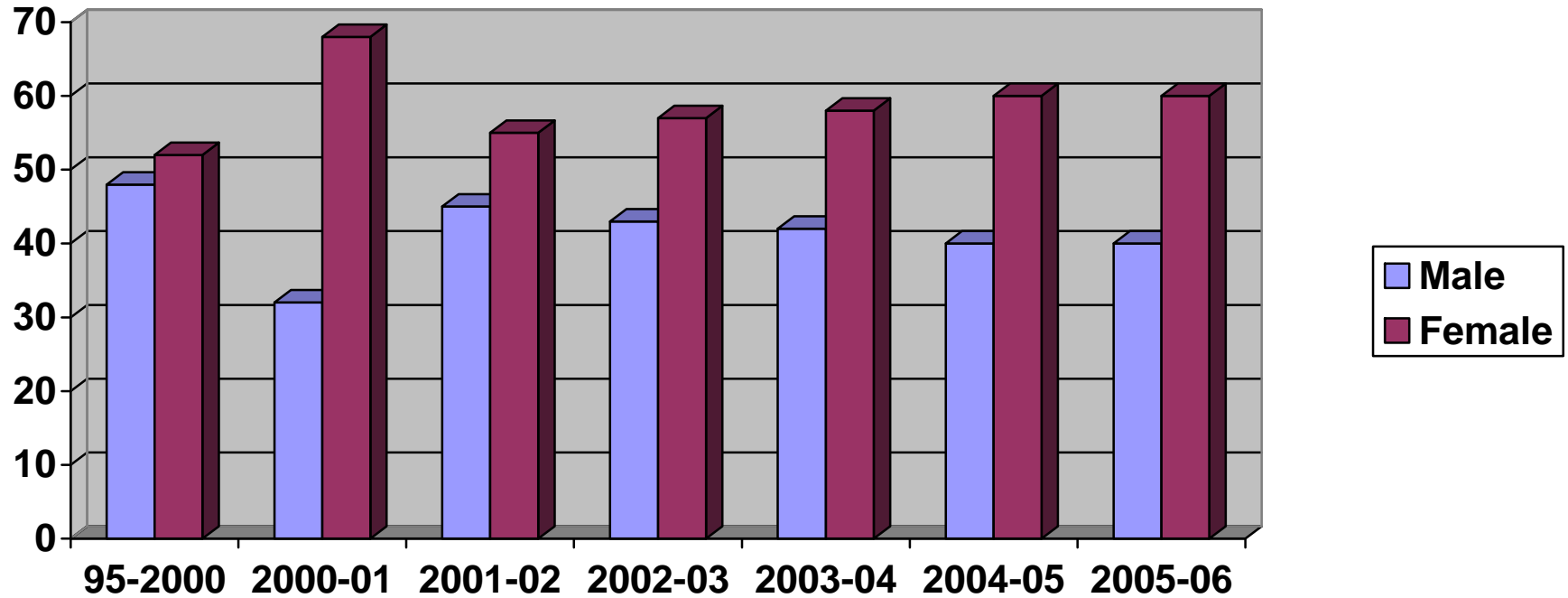
Years	1995-2000	2000-01	2001-02	2002-03	2003-04	2004-05	2005-06
Number of students	1058	599	1029	1091	986	1498	1786

**CHART 4****NUMBER OF STUDENTS BY COLLEGE**

<b>College</b>	<b>2002 - 03</b>	<b>2003 - 04</b>	<b>2004-05</b>	<b>2005 – 06</b>
Algonquin	99	86	322	496
Boreal	N/A	N/A	65	83
Cambrian	138	130	202	243
Canadore	38	30	22	16
Centennial	37	23	20	25
Conestoga	65	56	59	31
Confederation	48	68	Not available	20
Durham	32	30	71	59
Fanshawe	42	41	35	40
Fleming	64	87	124	103
George Brown	N/A	7	38	60
Georgian	N/A	43	59	59
Humber	47	28	32	21
La Cite	20	32	22	56
Lambton	9	15	9	12
Loyalist	16	20	46	56
Mohawk	206	28	46	32
Niagara	21	27	20	23
Northern	97	60	40	89
Sault	N/A	36	14	23
Seneca	56	24	136	52
Sheridan	N/A	43	32	105
St. Clair	N/A	N/A	N/A	N/A
St. Lawrence	56	72	84	82
<b>TOTAL</b>	<b>1091</b>	<b>986</b>	<b>1498</b>	<b>1786</b>

**CHART 5**

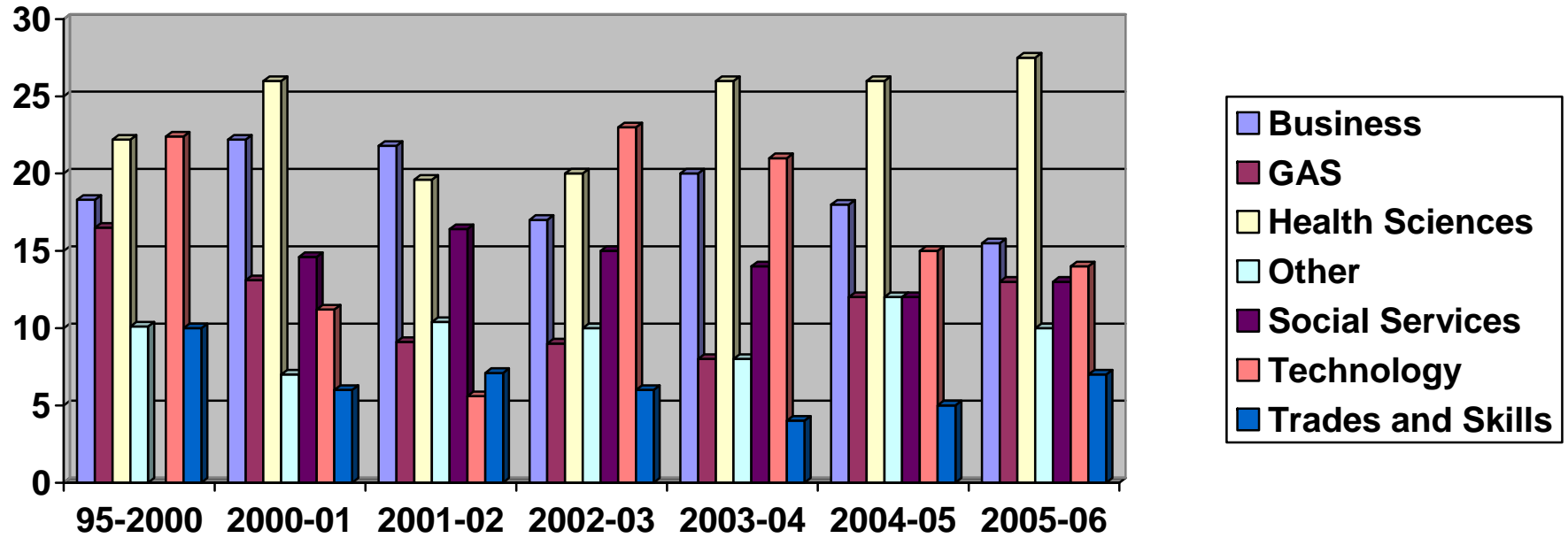
**MALE/FEMALE DISTRIBUTION**



Years	1995-2000	2000-01	2001-02	2002-03	2003-04	2004-05	2005-06
Male	48 %	32 %	45 %	43 %	42%	40%	40%
Female	52 %	68 %	55 %	57 %	58%	60%	60%

**CHART 6**

**PARTICIPATION BY PROGRAM CATEGORY**

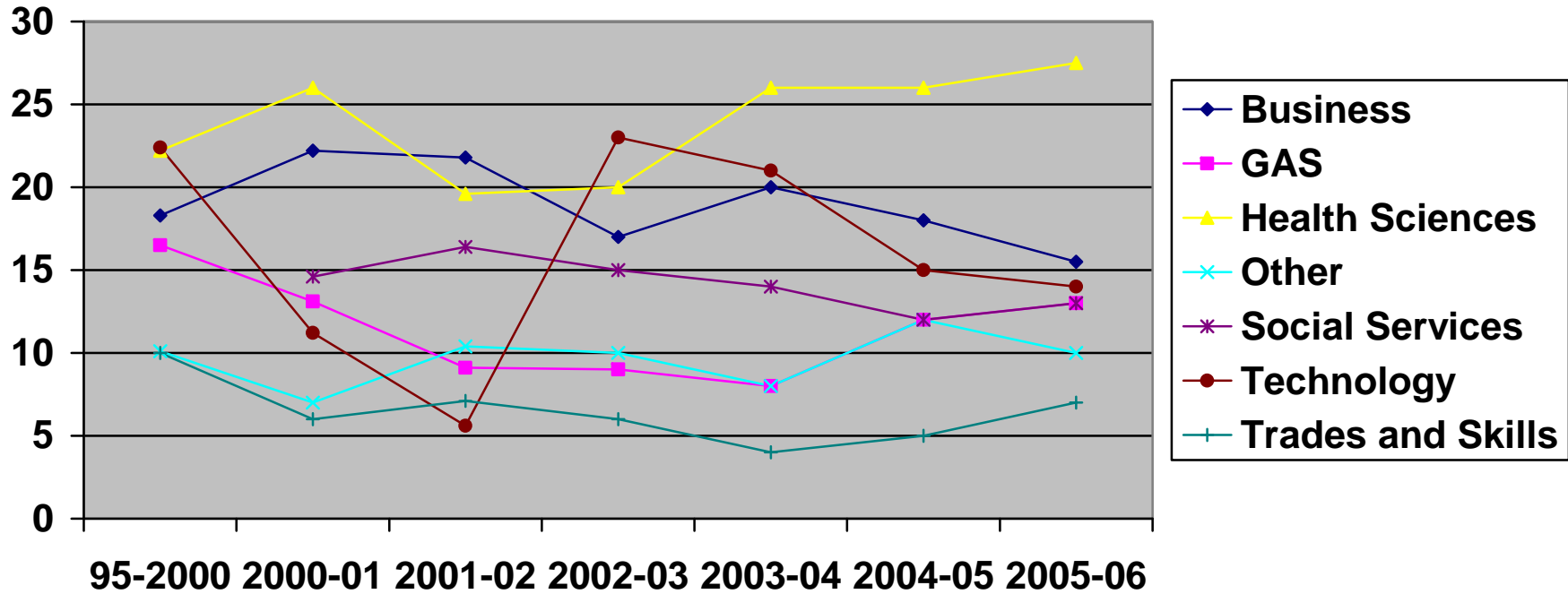


Years	1995-2000	2000-01	2001-02	2002-03	2003-04	2004-05	2005-06
Business	18.3 %	22.2 %	21.8 %	17 %	20%	18%	15.5%
General Arts & Sciences	16.5 %	13.1 %	9.1 %	9 %	8%	12%	13%
Health Sciences	22.2 %	26 %	19.6 %	20 %	26%	26%	27.5%
Other	10.1 %	7 %	10.4 %	10 %	8%	12%	10%
Social Services	* included in other	14.6 %	16.4 %	15 %	14%	12%	13%
Technology	22.4 %	11.2 %	5.6 %	23 %	21%	15%	14%
Trades & Skills	10 %	6 %	7.1 %	6 %	4%	5%	7%



**CHART 8**

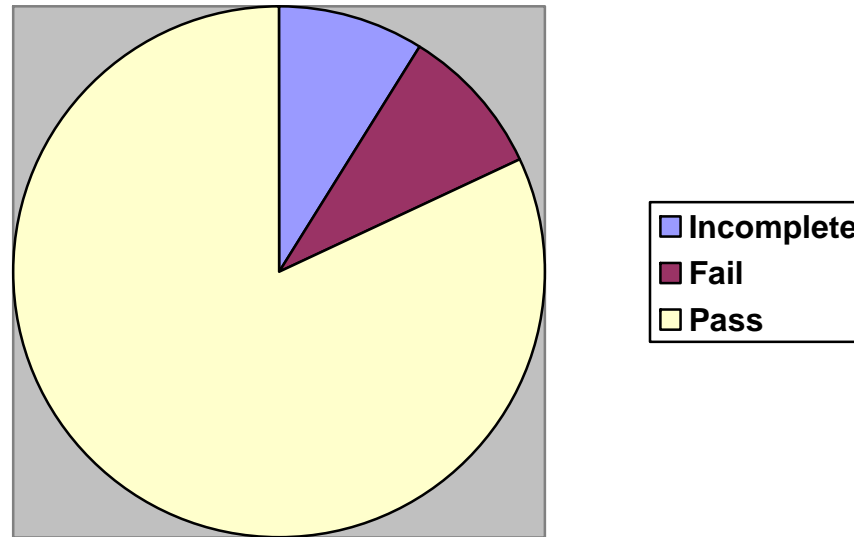
**PARTICIPATION BY PROGRAM CATEGORY**



Years	1995-2000	2000-01	2001-02	2002-03	2003-04	2004-05	2005-06
Business	18.3 %	22.2 %	21.8 %	17 %	20%	18%	15.5%
General Arts & Sciences	16.5 %	13.1 %	9.1 %	9 %	8%	12%	13%
Health Sciences	22.2 %	26 %	19.6 %	20 %	26%	26%	27.5%
Other	10.1 %	7 %	10.4 %	10 %	8%	12%	10%
Social Services	*included in other	14.6 %	16.4 %	15 %	14%	12%	13%
Technology	22.4 %	11.2 %	5.6 %	23 %	21%	15%	14%
Trades & Skills	10	6 %	7.1 %	6 %	4%	5%	7%

**CHART 9**

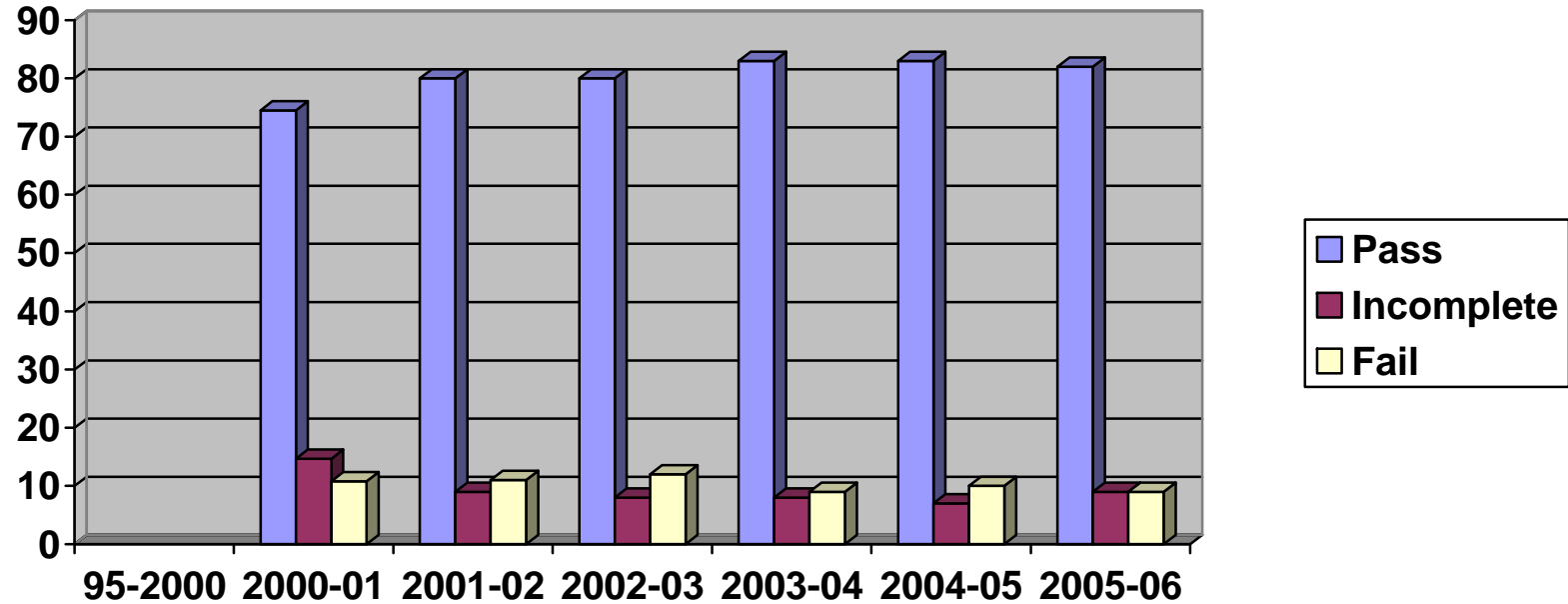
**FIRST SEMESTER RESULTS  
ALL PROGRAMS**



Incomplete	9 %
Fail	9 %
Pass	82 %

**CHART 10**

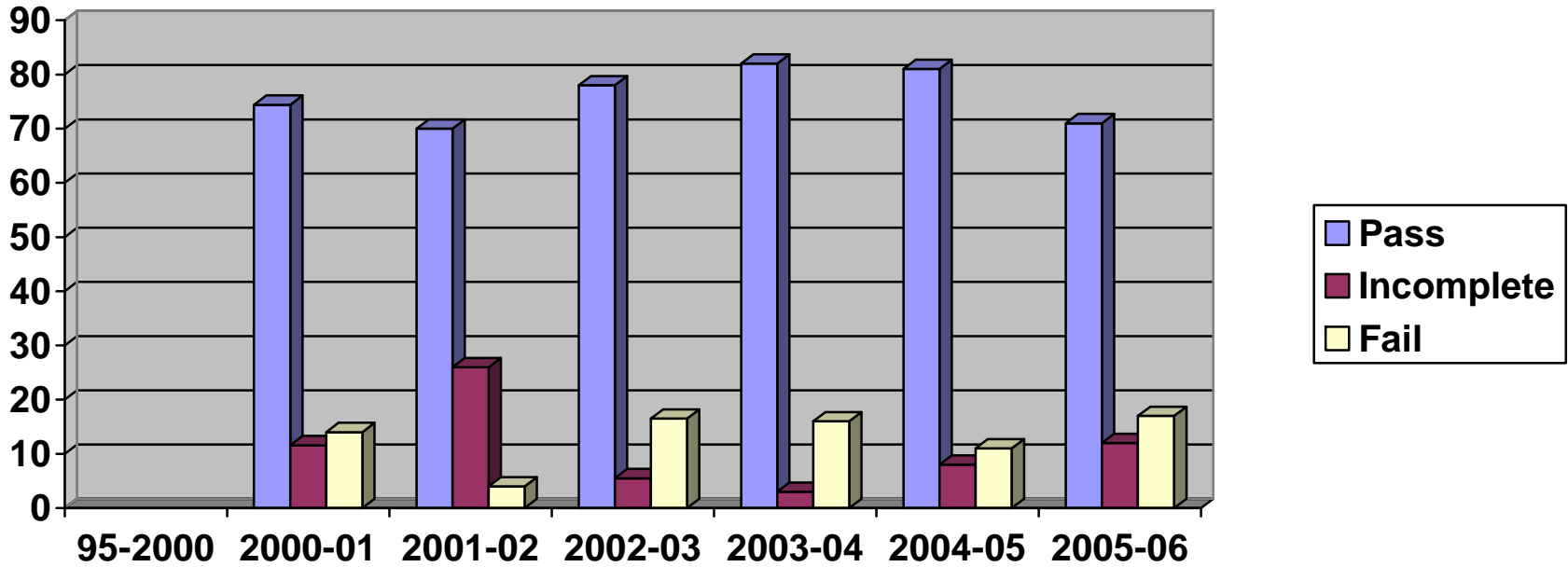
**BUSINESS  
1<sup>ST</sup> SEMESTER RESULTS**



Years	1995-2000	2000-01	2001-02	2002-03	2003-04	2004-05	2005-06
Pass	N/A	74.5 %	80 %	80 %	83%	83%	82%
Incomplete	N/A	14.7 %	9 %	8 %	8%	7%	9%
Fail	N/A	10.8 %	11 %	12 %	9%	10%	9%

**CHART 11**

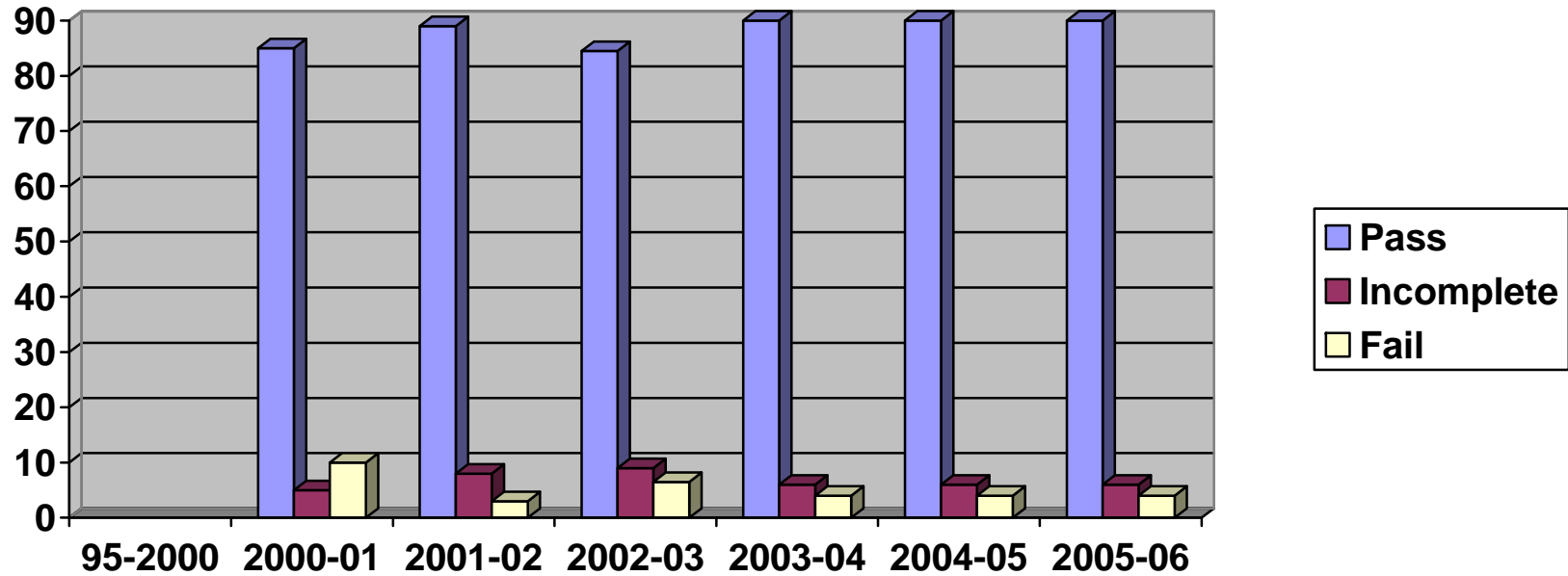
**GENERAL ARTS & SCIENCES  
1<sup>ST</sup> SEMESTER RESULTS**



Years	1995-2000	2000-01	2001-02	2002-03	2003-04	2004-05	2005-06
Pass	N/A	74.4 %	70 %	78 %	82%	81%	71%
Incomplete	N/A	11.6 %	26 %	5 %	3%	8%	12%
Fail	N/A	14 %	4 %	17 %	16%	11%	17%

**CHART 12**

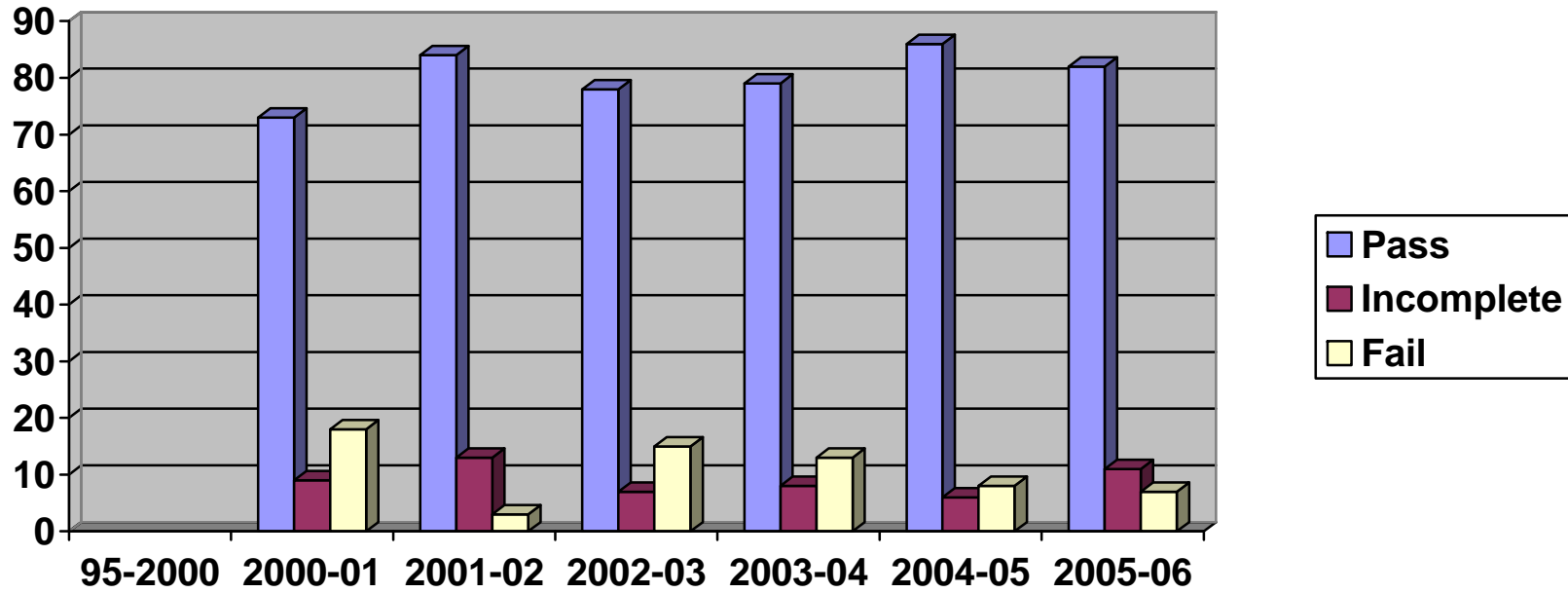
**HEALTH SCIENCES  
1<sup>ST</sup> SEMESTER RESULTS**



Years	1995-2000	2000-01	2001-02	2002-03	2003-04	2004-05	2005-06
Pass	N/A	85 %	89 %	84 %	90%	90%	90%
Incomplete	N/A	5 %	8 %	9 %	6%	6%	6%
Fail	N/A	10 %	3 %	7 %	4%	4%	4%

**CHART 13**

**OTHER  
1<sup>ST</sup> SEMESTER RESULTS**

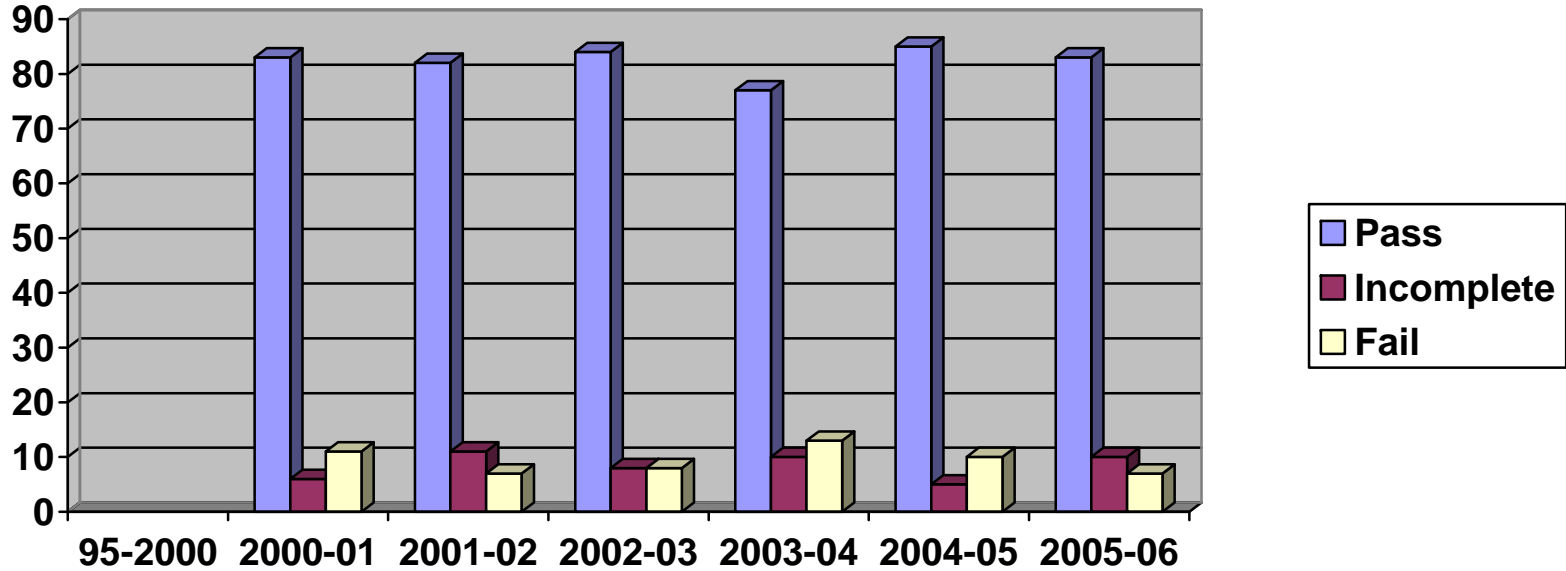


Years	1995-2000	2000-01	2001-02	2002-03	2003-04	2004-05	2005-06
Pass	N/A	73 %	84 %	79 %	79%	86%	82%
Incomplete	N/A	9 %	13 %	7 %	8%	6%	11%
Fail	N/A	18 %	3 %	14 %	13%	8%	7%

OTHER includes courses related to Culinary Studies, Fashion, Hospitality and Tourism, Media, Sports and Leisure Management

**CHART 14**

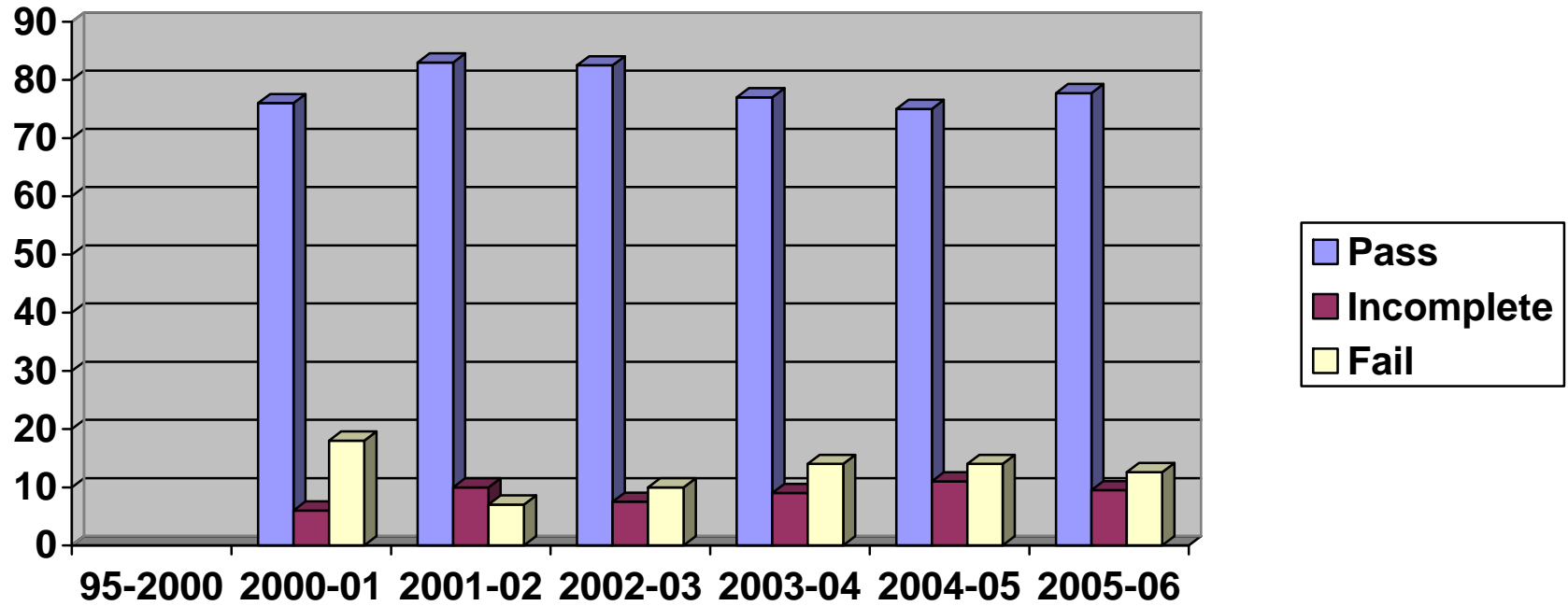
**SOCIAL SERVICES  
1<sup>ST</sup> SEMESTER RESULTS**



Years	1995-2000	2000-01	2001-02	2002-03	2003-04	2004-05	2005-06
Pass	N/A	83 %	82 %	84 %	77%	85%	83%
Incomplete	N/A	6 %	11 %	8 %	10%	5%	10%
Fail	N/A	11 %	7 %	8 %	13%	10%	7%

**CHART 15**

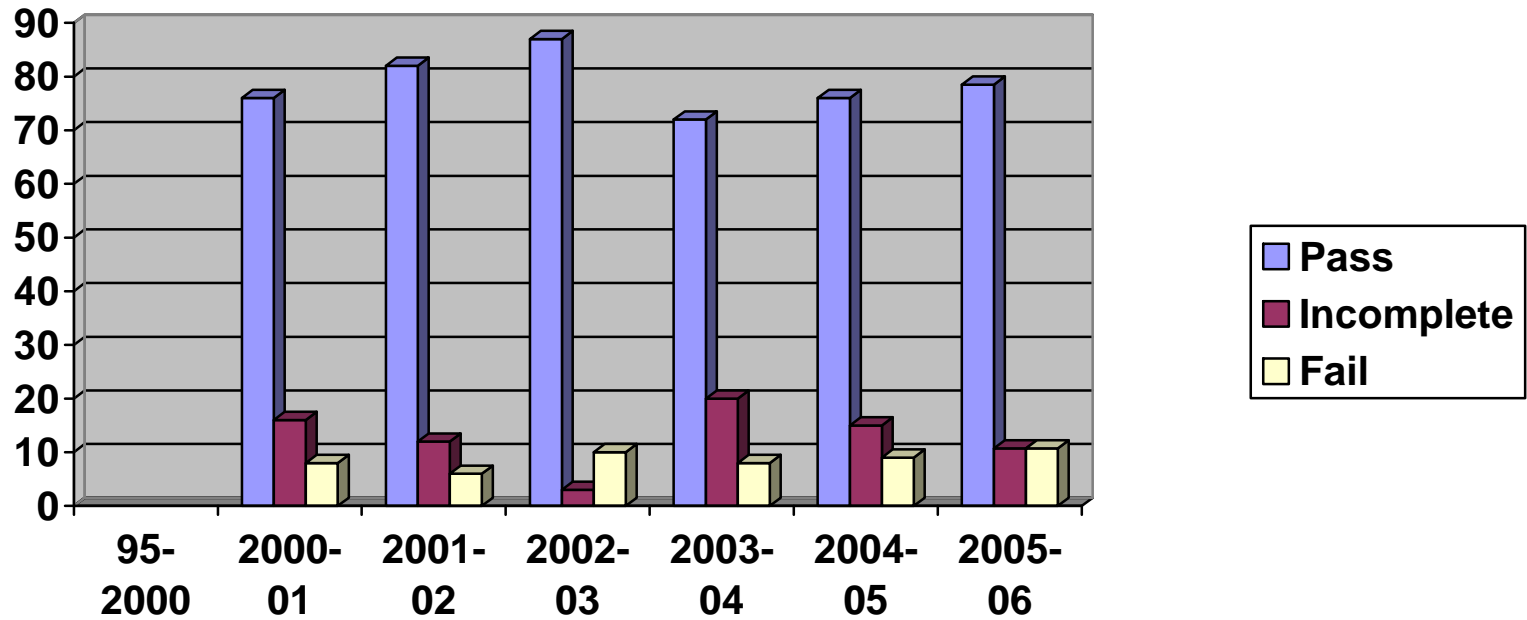
**TECHNOLOGY  
1<sup>ST</sup> SEMESTER RESULTS**



Years	1995-2000	2000-01	2001-02	2002-03	2003-04	2004-05	2005-06
Pass	N/A	76 %	83 %	82.5 %	77%	75%	77.7%
Incomplete	N/A	6 %	10 %	7.5 %	9%	11%	9.5%
Fail	N/A	18 %	7 %	10 %	14%	14%	12.6%

**CHART 16**

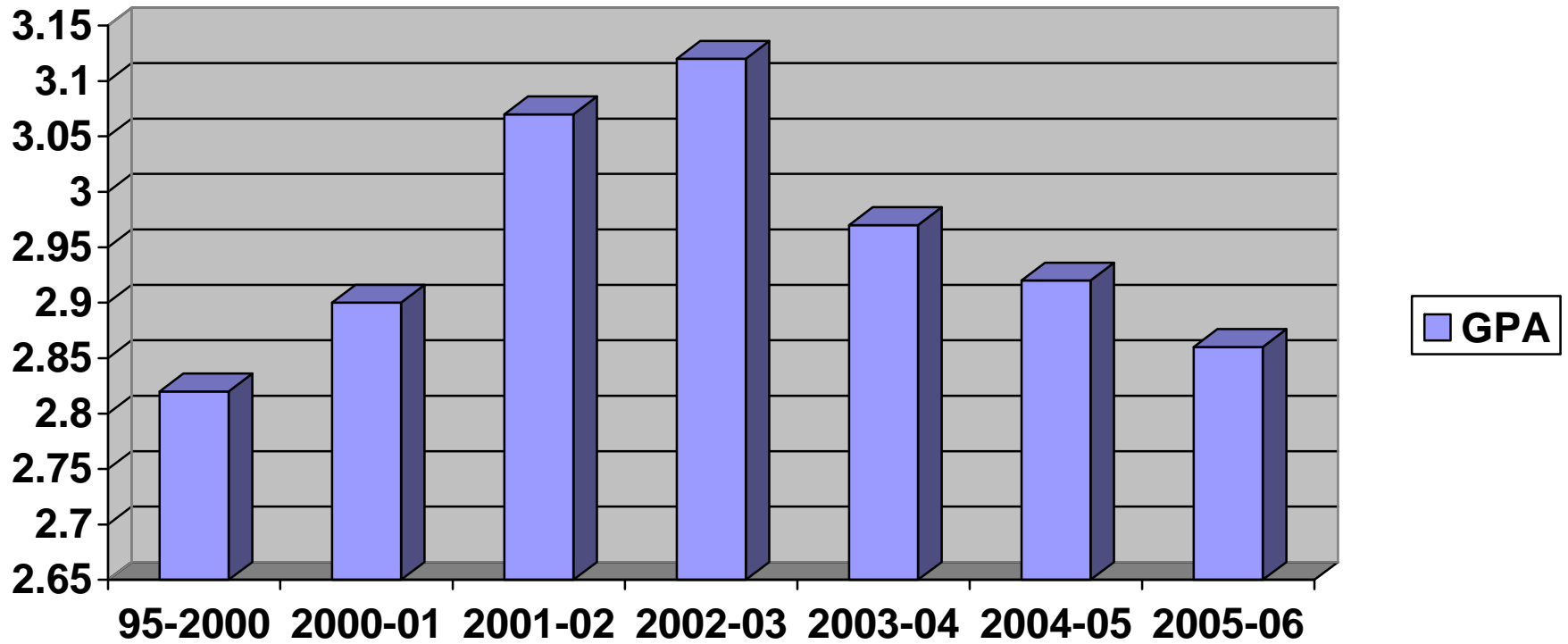
**TRADES & SKILLS  
1<sup>ST</sup> SEMESTER RESULTS**



Years	1995-2000	2000-01	2001-02	2002-03	2003-04	2004-05	2005-06
Pass	N/A	76 %	82 %	87 %	72%	76%	78.5%
Incomplete	N/A	16 %	12 %	3 %	20%	15%	10.7%
Fail	N/A	8 %	6 %	10 %	8%	9%	10.7%

CHART 17

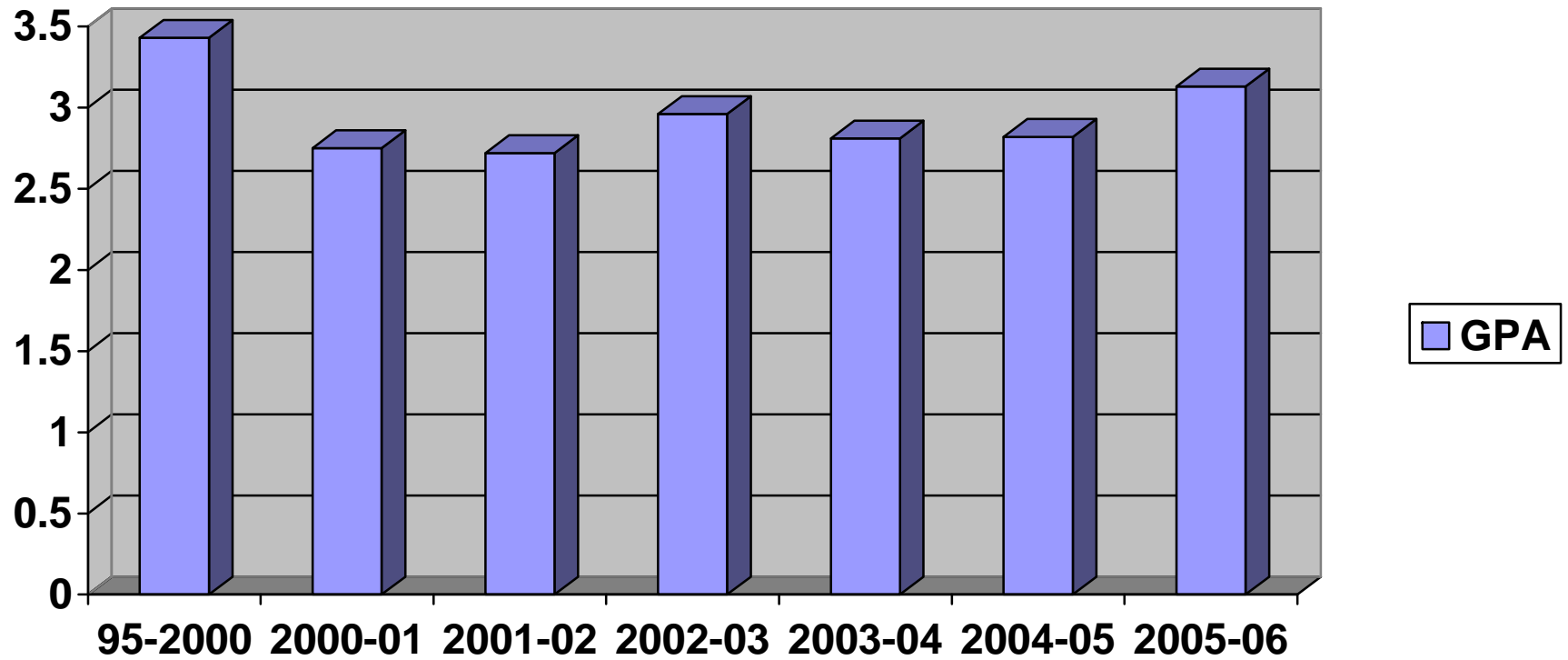
**BUSINESS  
GPA END OF FIRST SEMESTER**



Years	1995-2000 (all semesters)	2000-01	2001-02	2002-03	2003-04	2004-05	2005-06
		(first term only)					
GPA	2.82	2.9	3.07	3.12	2.97	2.92	2.86

**CHART 18**

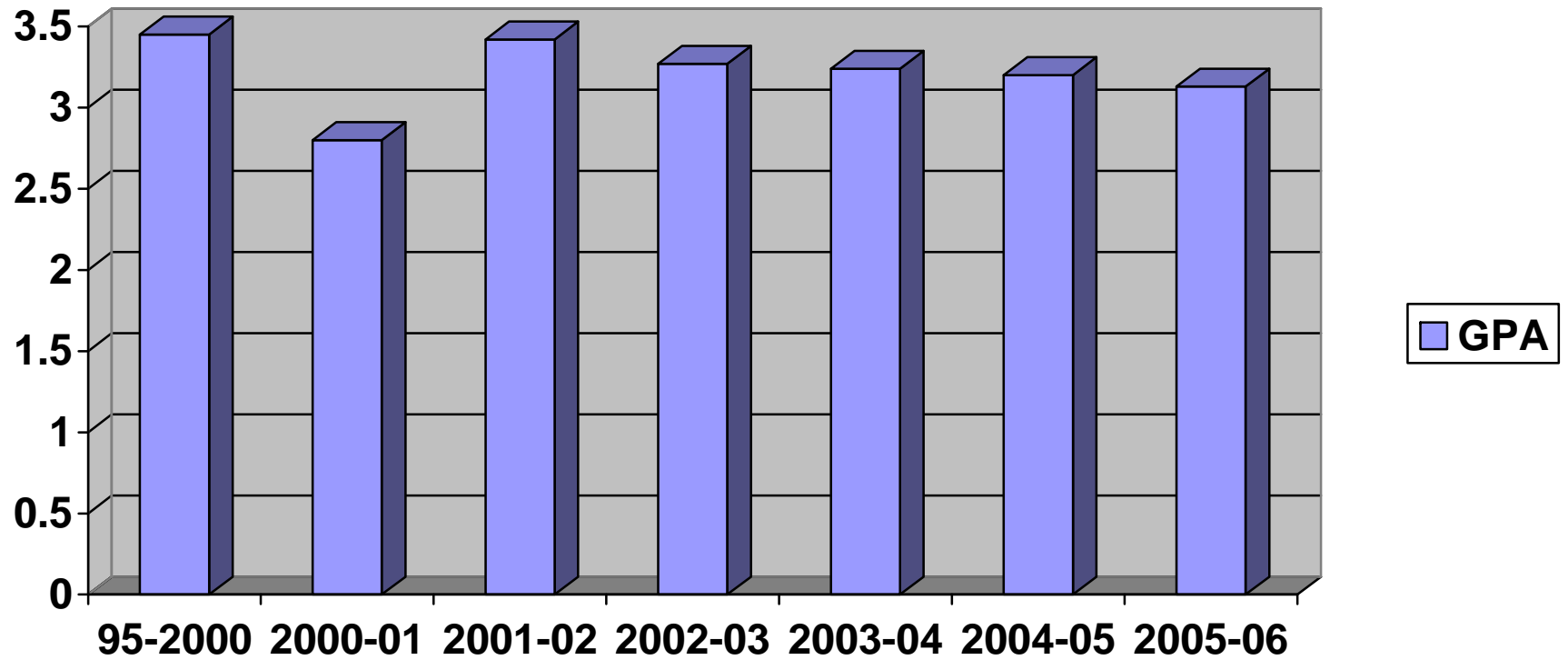
**GENERAL ARTS & SCIENCES  
GPA END OF FIRST SEMESTER**



Years	1995-2000 (all semesters)	2000-01	2001-02	2002-03	2003-04	2004-05	2005-06
GPA	3.43	2.75	2.72	2.96	2.81	2.82	3.13

**CHART 19**

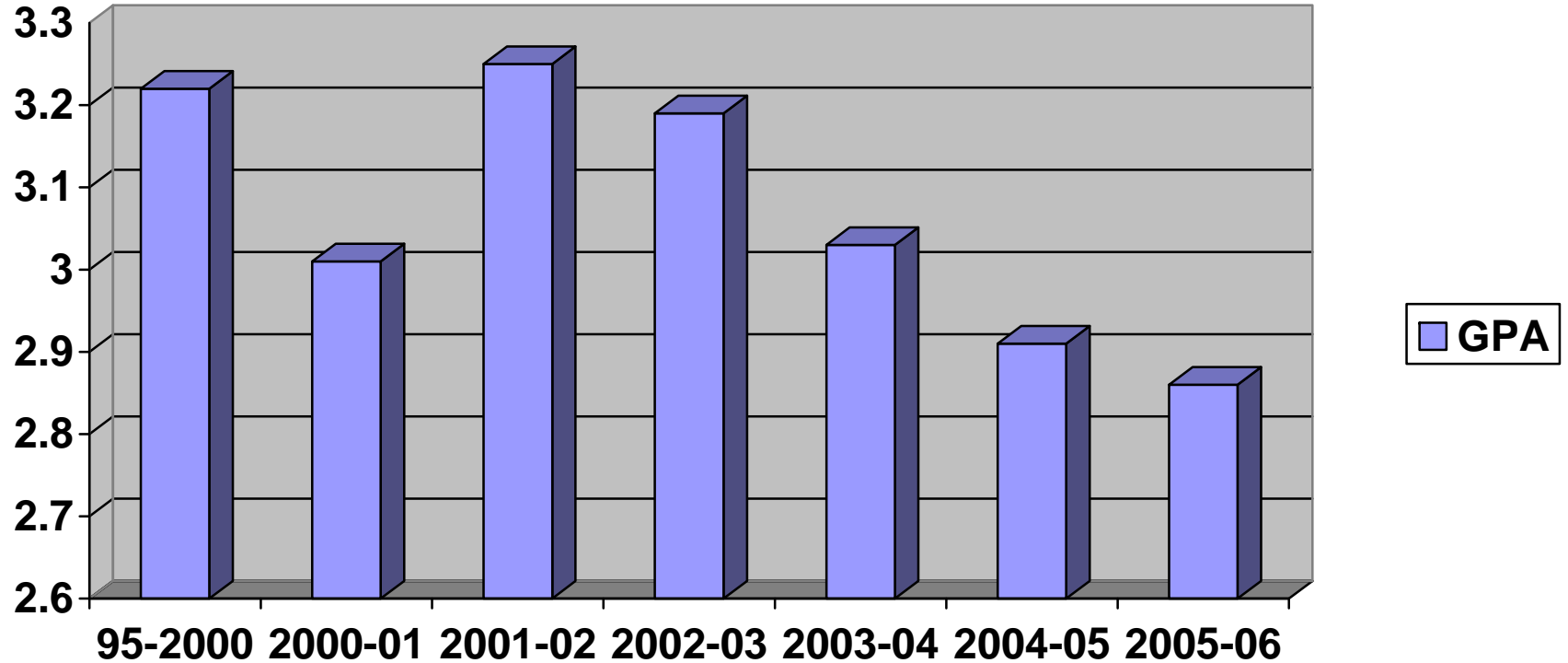
**HEALTH SCIENCES  
GPA END OF FIRST SEMESTER**



Years	1995-2000 (all semesters)	2000-01	2001-02	2002-03	2003-04	2004-05	2005-06
		(first term only)					
GPA	3.45	2.8	3.42	3.27	3.24	3.20	3.13

**CHART 20**

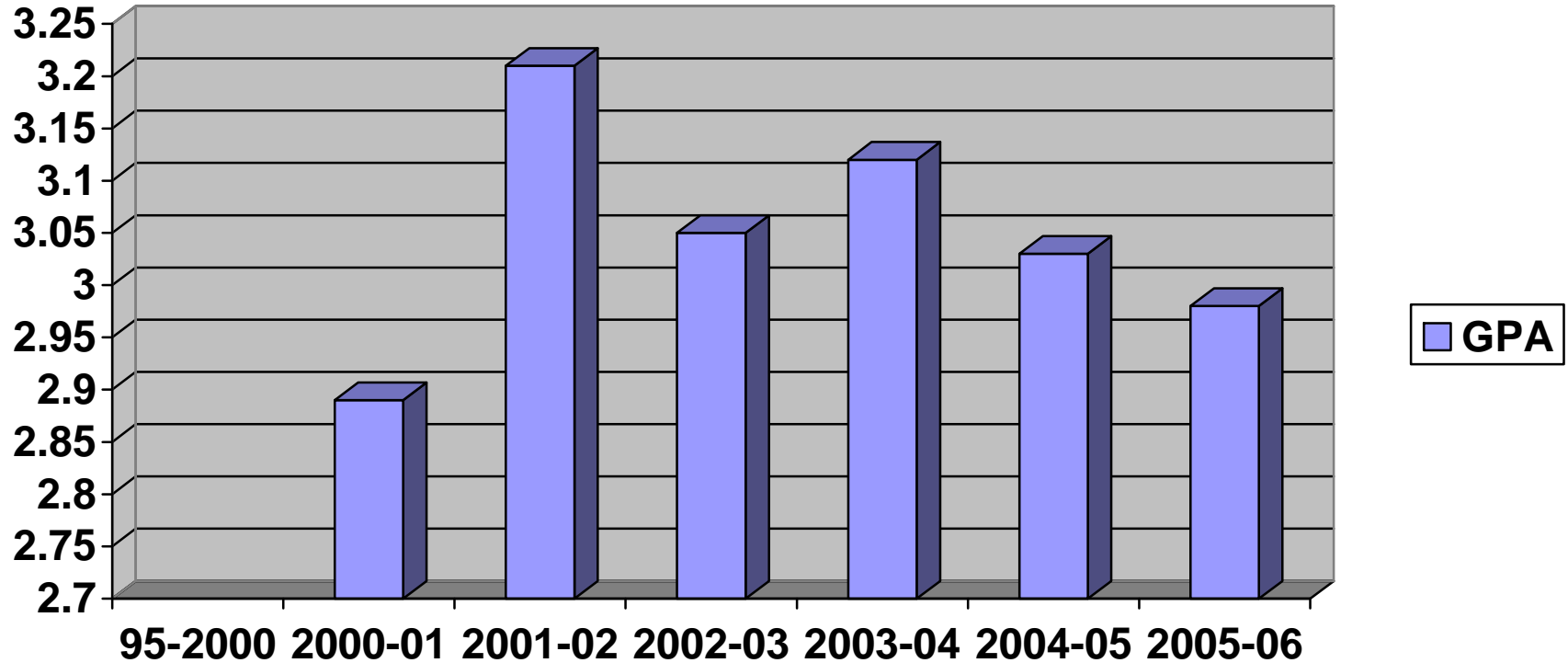
**OTHER  
GPA END OF FIRST SEMESTER**



Years	1995-2000 (all semesters)	2000-01	2001-02	2002-03	2003-04	2004-05	2005-06
GPA	3.22	3.01	3.25	3.19	3.03	2.91	2.86

**CHART 21**

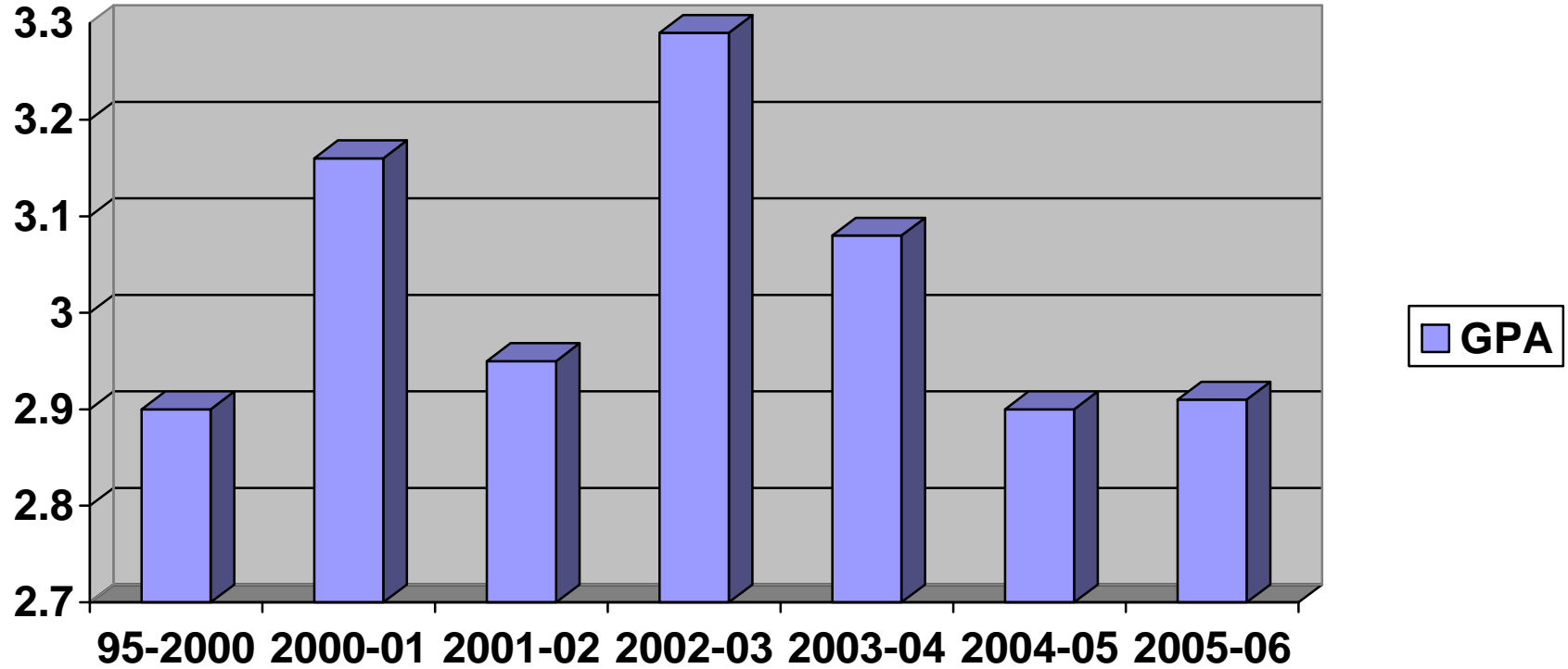
**SOCIAL SERVICES  
GPA END OF FIRST SEMESTER**



Years	1995-2000 (all semesters)	2000-01	2001-02	2002-03	2003-04	2004-05	2005-06
GPA	N/A	2.89	3.21	3.05	3.12	3.03	2.98

**CHART 22**

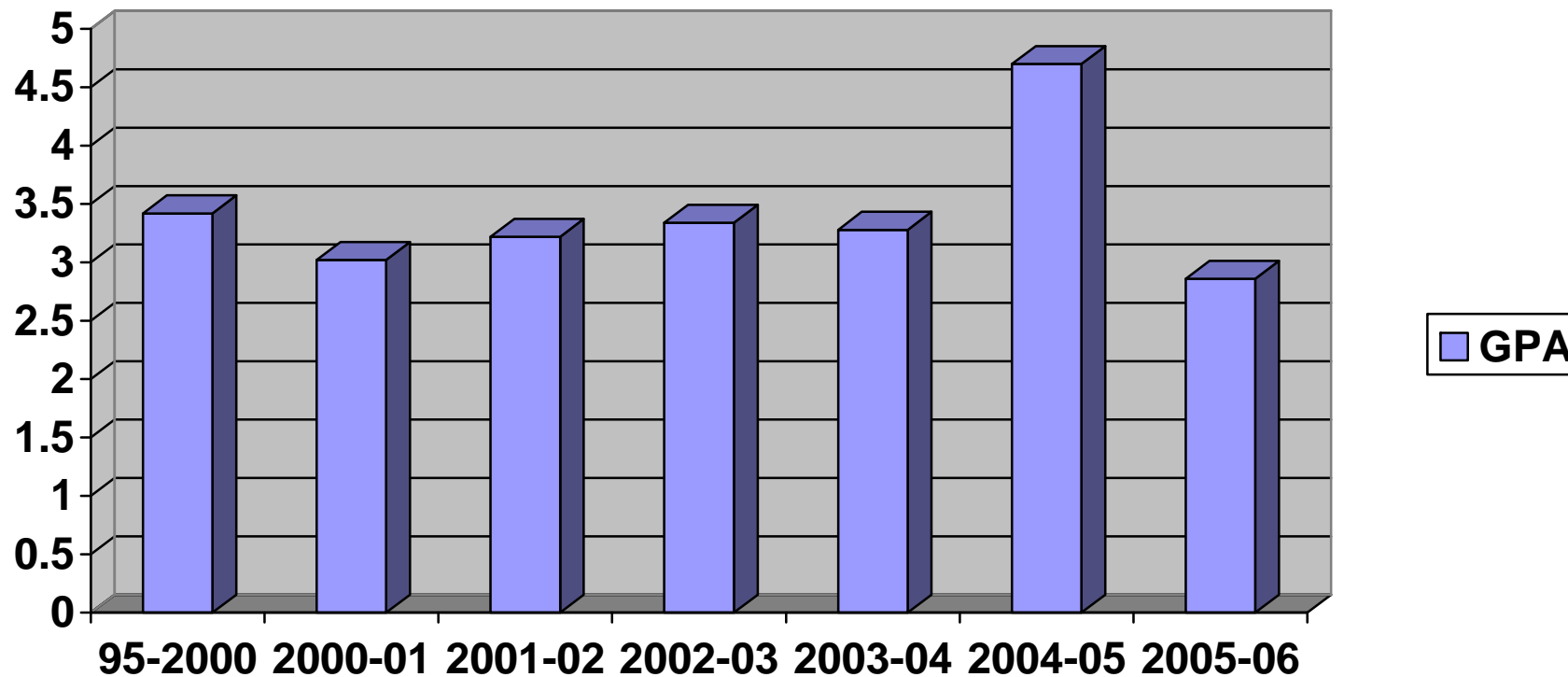
**TECHNOLOGY  
GPA END OF FIRST SEMESTER**



Years	1995-2000 (all semesters)	2000-01	2001-02	2002-03	2003-04	2004-05	2005-06
GPA	2.9	3.16	2.95	3.29	3.08	2.90	2.91

**CHART 23**

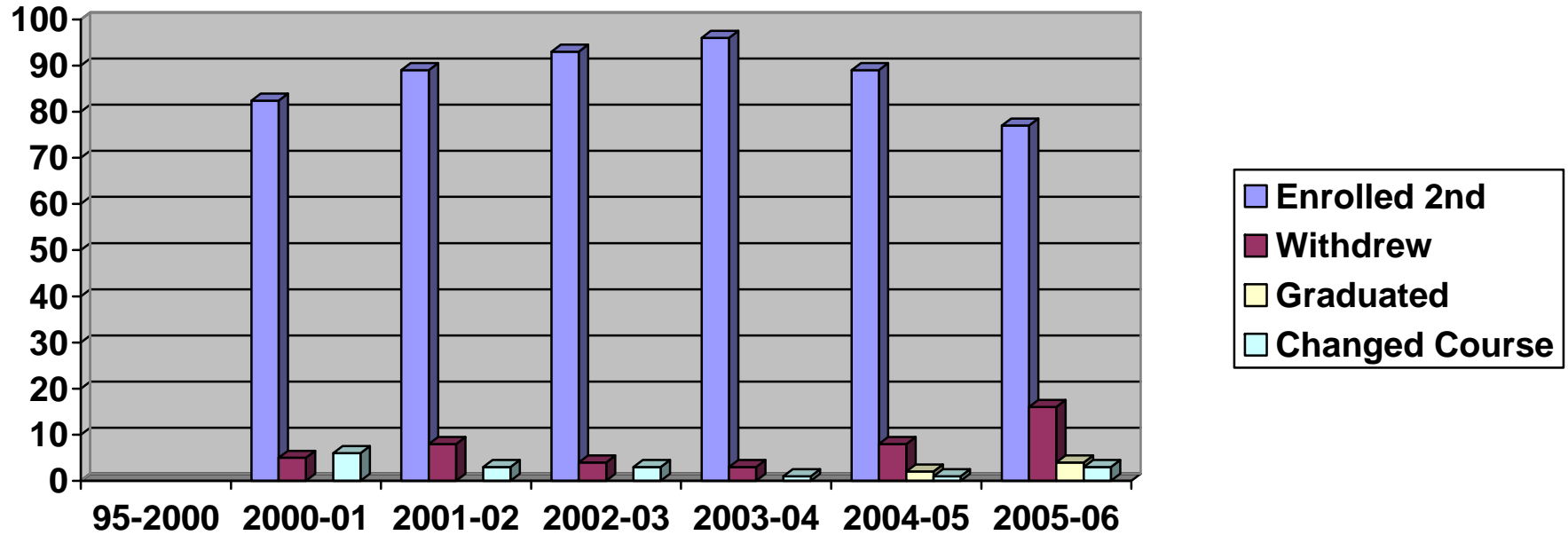
**TRADES & SKILLS  
GPA END OF FIRST SEMESTER**



Years	1995-2000 (all semesters)	2000-01	2001-02	2002-03	2003-04	2004-05	2005-06
GPA	3.42	3.02	3.22	3.34	3.28	4.70	2.86

**CHART 24**

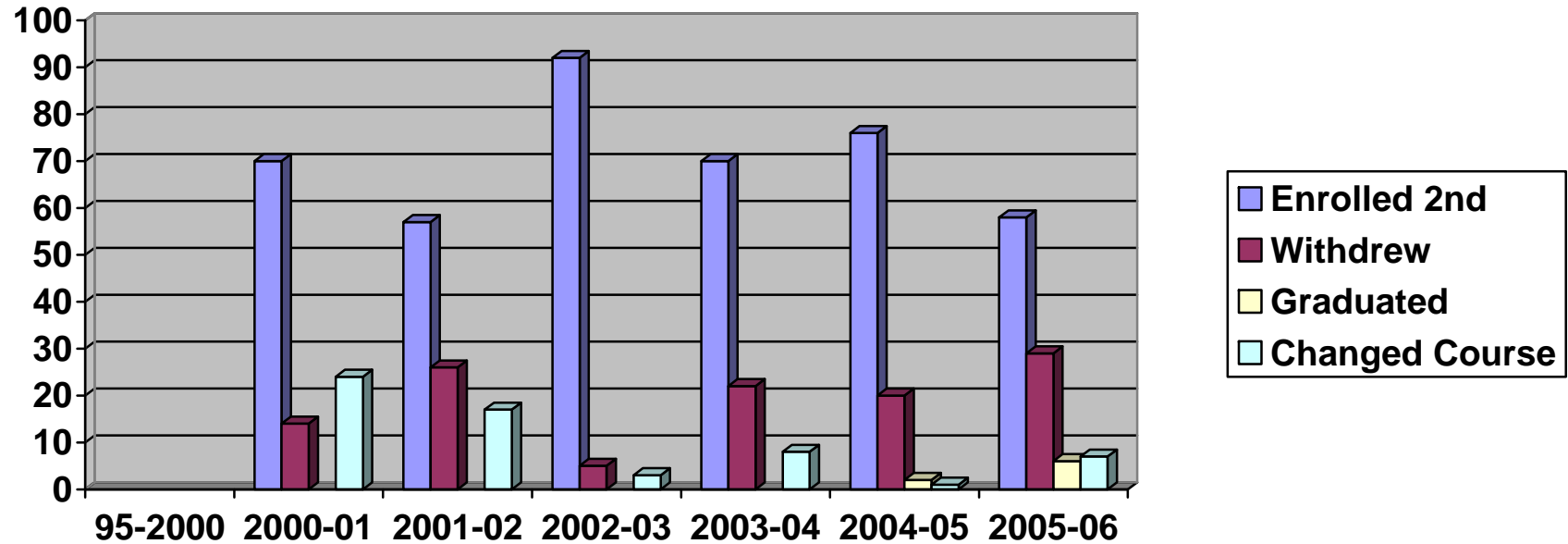
**BUSINESS  
ENROLMENT STATUS AT END OF FIRST SEMESTER**



Years	1995-2000	2000-01	2001-02	2002-03	2003-04	2004-05	2005-06
Enrolled 2 <sup>nd</sup> Semester	N/A	82.4 %	89 %	93 %	96%	89%	77%
Withdrew	N/A	5 %	8 %	4 %	3%	8%	16%
Graduated	N/A	N/A	N/A	N/A	N/A	2%	4%
Changed Course	N/A	6 %	3 %	3 %	1%	1%	3%

**CHART 25**

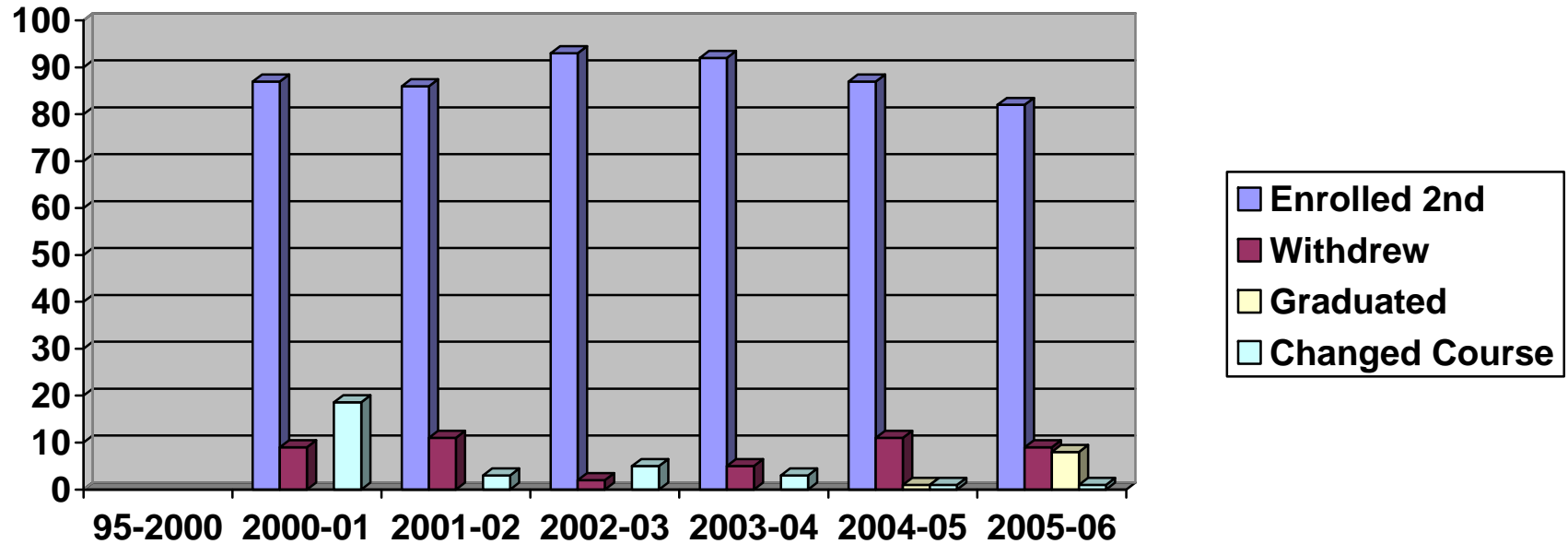
**GENERAL ARTS & SCIENCES  
ENROLMENT STATUS AT END OF FIRST SEMESTER**



Years	1995-2000	2000-01	2001-02	2002-03	2003-04	2004-05	2005-06
Enrolled 2 <sup>nd</sup> Semester	N/A	70 %	57 %	92 %	70%	76%	58%
Withdrew	N/A	14 %	26 %	5 %	22%	20%	29%
Graduated	N/A	N/A	N/A	N/A	N/A	2%	6%
Changed Course	N/A	24 %	17 %	3 %	8%	1%	7%

**CHART 26**

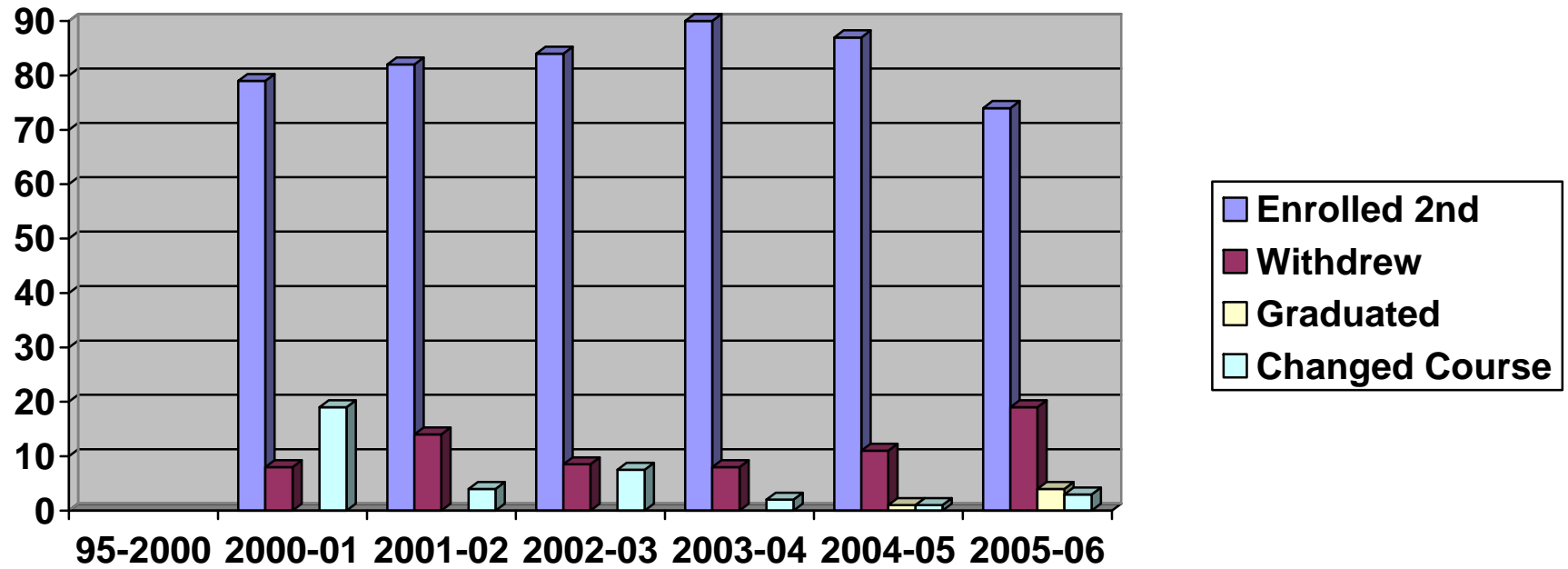
**HEALTH SCIENCES  
ENROLMENT STATUS AT END OF FIRST SEMESTER**



Years	1995-2000	2000-01	2001-02	2002-03	2003-04	2004-05	2005-06
Enrolled 2 <sup>nd</sup> Semester	N/A	87 %	86 %	93 %	92%	87%	82%
Withdrew	N/A	9 %	11 %	2 %	5%	11%	9%
Graduated	N/A	N/A	N/A	N/A	N/A	1%	8%
Changed Course	N/A	18.6 %	3 %	5 %	3%	1%	1%

**CHART 27**

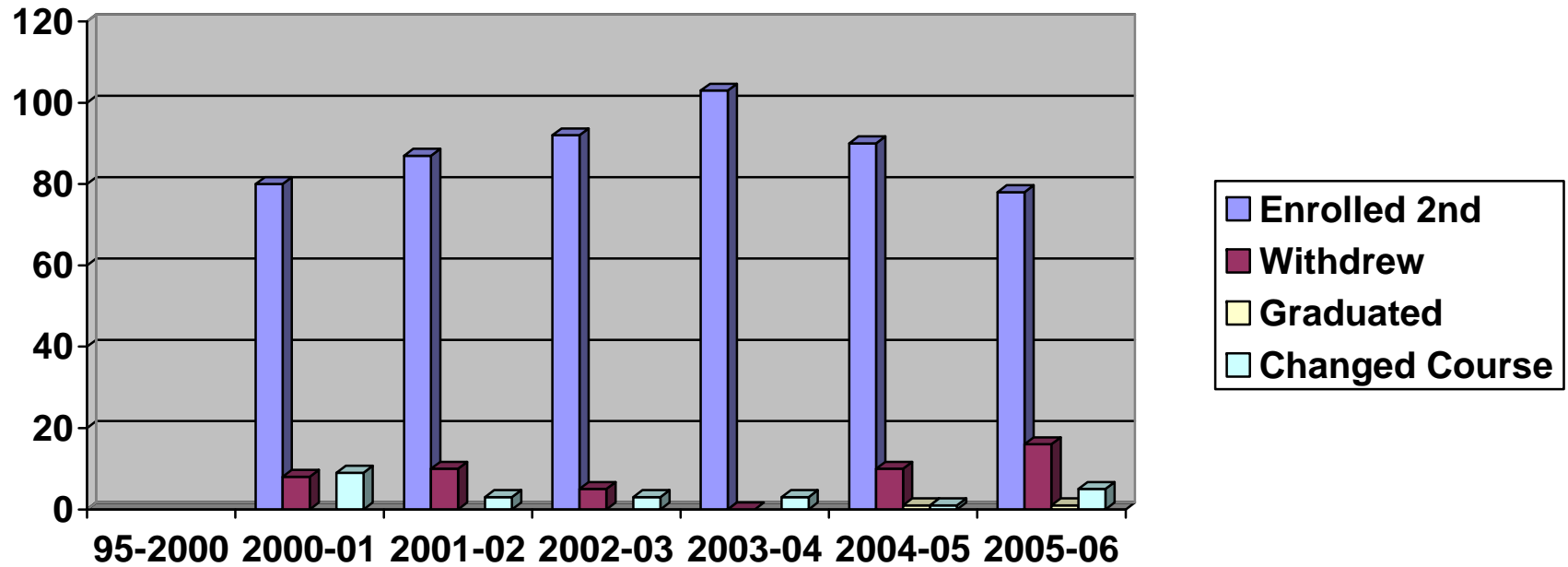
**OTHER  
ENROLMENT STATUS AT END OF FIRST SEMESTER**



Years	1995-2000	2000-01	2001-02	2002-03	2003-04	2004-05	2005-06
Enrolled 2 <sup>nd</sup> Semester	N/A	79 %	82 %	84 %	90%	87%	74%
Withdrew	N/A	8 %	14 %	8.5 %	8%	11%	19%
Graduated	N/A	N/A	N/A	N/A	N/A	1%	4%
Changed Course	N/A	19 %	4 %	7.5 %	2%	1%	3%

CHART 28

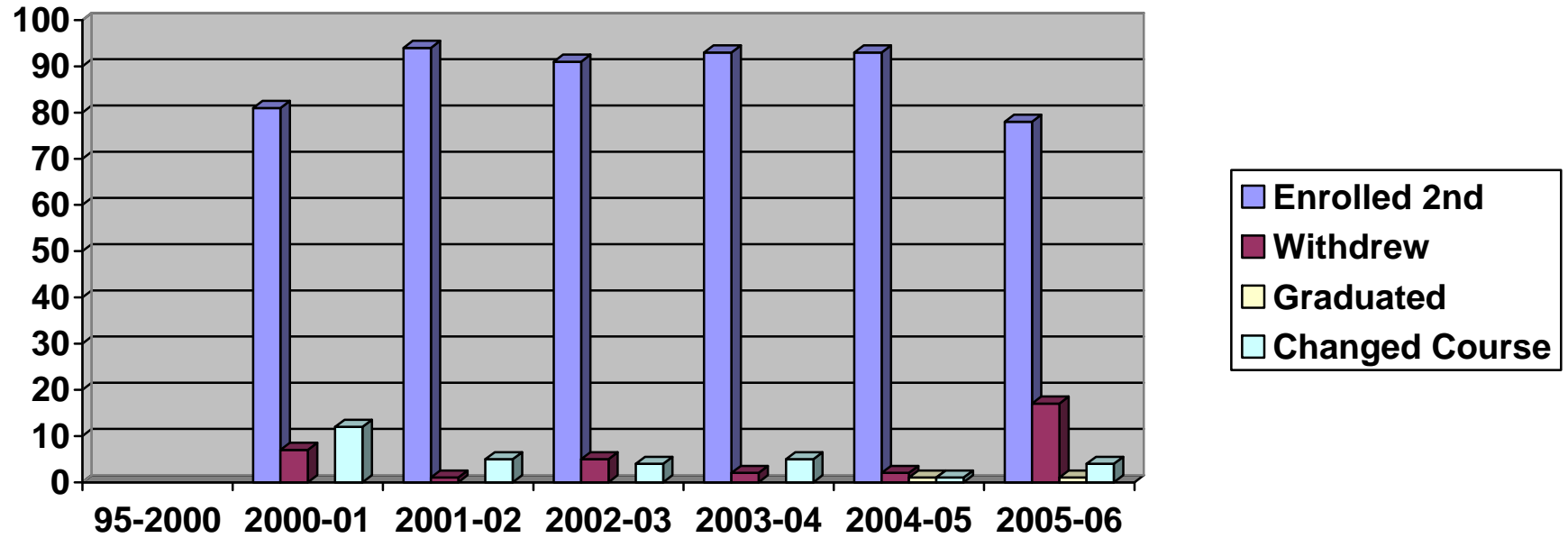
**SOCIAL SERVICES  
ENROLMENT STATUS AT END OF FIRST SEMESTER**



Years	1995-2000	2000-01	2001-02	2002-03	2003-04	2004-05	2005-06
Enrolled 2 <sup>nd</sup> Semester	N/A	80 %	87 %	92 %	103%	90%	78%
Withdrew	N/A	8 %	10 %	5 %	0%	10%	16%
Graduated	N/A	N/A	N/A	N/A	N/A	1%	1%
Changed Course	N/A	9 %	3 %	3 %	3%	1%	5%

**CHART 29**

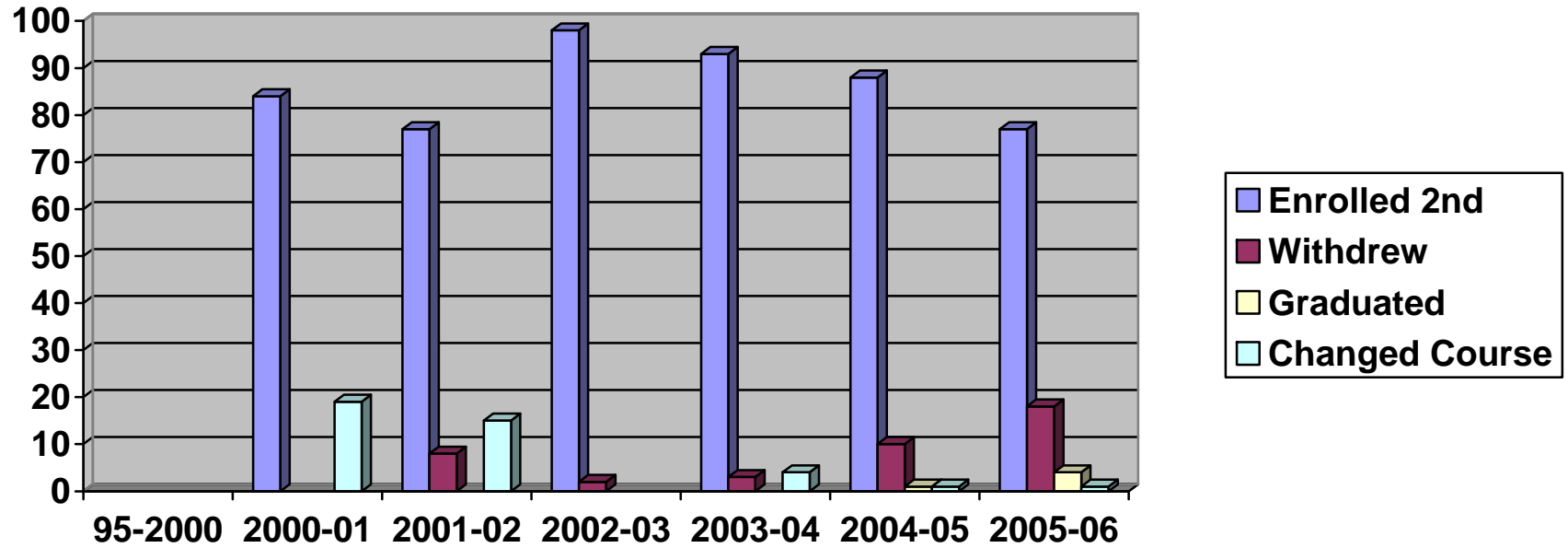
**TECHNOLOGY  
ENROLMENT STATUS AT END OF FIRST SEMESTER**



Years	1995-2000	2000-01	2001-02	2002-03	2003-04	2004-05	2005-06
Enrolled 2 <sup>nd</sup> Semester	N/A	81 %	94 %	91 %	93%	93%	78%
Withdrew	N/A	7 %	1 %	5 %	2%	2%	17%
Graduated	N/A	N/A	N/A	N/A	N/A	1%	1%
Changed Course	N/A	12 %	5 %	4 %	5%	1%	4%

**CHART 30**

**TRADES & SKILLS  
ENROLMENT STATUS AT END OF FIRST SEMESTER**



Years	1995-2000	2000-01	2001-02	2002-03	2003-04	2004-05	2005-06
Enrolled 2 <sup>nd</sup> Semester	N/A	84 %	77 %	98 %	93%	88%	77%
Withdrew	N/A	N/A	8 %	2 %	3%	10%	18%
Graduated	N/A	N/A	N/A	N/A	N/A	1%	4%
Changed Course	N/A	19 %	15 %	0 %	4%	1%	1%