

PREPARED FOR SUCCESS

2008-2009

A Study of the Success of Adult Upgrading Graduates in the First Semester of Postsecondary Programs



**Prepared by
College Sector Committee for Adult Upgrading**

January, 2010

BACKGROUND

The initial study published in January 2001 was funded jointly by the National Literacy Secretariat and the Ministry of Training, Colleges and Universities. It examined the postsecondary outcomes of students who had moved on from upgrading programs to further education in the college system from the fall of 1995 to January 2000. This study has been ongoing for **fourteen** years. The report which follows is comprised primarily of bar graphs which compare results for the past **seven** years.

The initial study tracked fulltime students from postsecondary admission through to graduation documenting success in terms of retention and grade point average. “Students were tracked from the first semester of their studies to graduation, withdrawal or failure. Eighty three percent of these preparatory students graduated.” The 23 % of students who withdrew did so primarily for financial reasons. Sixty three percent of the students who withdrew did so during the first semester of their postsecondary studies.

The subsequent annual studies have focused exclusively on first semester results. It was decided to focus on the first semester to simplify the collection of data. Furthermore the initial study demonstrated conclusively that there is a high correlation between first semester success and eventual graduation.

In addition to reporting on GPA and successful completion of the first semester as indicators of success, this report also provides data on the number of students who enrolled in second semester as well program changes in the second semester. The stats conclusively demonstrate that individuals who have received prior training in a college academic upgrading programs achieve high marks, have the necessary commitment to complete their training and make the correct program choices prior to enrolling in postsecondary.

The initial study examined enrollment in 6 program categories: Business, General Arts and Sciences, Health, Technology, Trades and Other. Subsequent studies separated Social Services programs from the Other category. The initial report is available on line at www.collegeupgradingon.ca. Annual Reports.

This year for the first time all 24 colleges were able to provide data. Although all colleges were able to participate, many still have to rely on a manual examination of first semester results. This makes the process complicated and time consuming. Increasingly colleges are making the necessary arrangements to generate summaries through their student information systems.

The CSC would like to thank all those managers and support staff who collected this data. It is not an easy task, but it is a task which must be done in order to demonstrate the positive influence which academic upgrading programs have on postsecondary programming.

PARTICIPANT NUMBERS

The numbers of students who have moved on to postsecondary which are provided are very conservative.

- ? This report only provides information on students who have registered in fulltime postsecondary programs; it does not include students who are participating in postsecondary programming on a part time basis or through Continuing Education including Distance programming.
- ? Some colleges have also limited their collection of data to students who moved directly from upgrading to postsecondary. Consequently many students who may have “stopped out” are not included.
- ? Perhaps the most significant factor affecting a complete reflection of the numbers enrolling in postsecondary is the inability of colleges to track academic upgrading students who moved on to postsecondary programming at another college. It is not currently possible to track these students through either OCAS or individual college registration systems. This is especially significant in the GTA where there is considerable student movement to access postsecondary programming. There are individual studies by colleges across Ontario which indicate students frequently move to colleges outside their region for postsecondary. The CSC was part of the *Adult Student Pathways to Postsecondary* project led by Colleges Ontario. This project explored the possibility of developing a data collection process which would enable colleges to track the movement of upgrading students to other colleges for postsecondary.

Solving the problem of capturing the results for all Academic Upgrading participants who have moved on to postsecondary programming will become even more complex next year since many students will be securing their ACE course prerequisites entirely through distance learning. These students are registered through Distance Education departments not College Upgrading. The CSC is currently evaluating how next step enrollment can best be captured from ACE Distance learners.

2008-2009 Results

PARTICIPATING COLLEGES

(Charts 1-4)

The results documented here are for the Spring and Fall 2008, and Winter 2009 semesters. Student success both in terms of GPA and retention continues to be outstanding. Twenty four colleges provided data.

The number of students per college is detailed in chart four of the report. The number of students which colleges were able to track moving on to postsecondary increased from 2,245 in 2007-2008 to 2,858 for 2008-2009. This is a 27% increase. Chart 4A shows the percentage change for the past two years for all colleges.

Once again this year Algonquin has the largest number of students moving on to postsecondary at 541 or 19% of the provincial total. (Chart 4 B). Centennial, Fanshawe, Georgian, Mohawk, Niagara, Northern and St Lawrence Colleges all posted significant percentage increases. Once again it is important to remember that, especially in the GTA, numbers are adversely affected by the inability to collect data on transfers.

POSTSECONDARY PROGRAM SELECTION

(Charts 6-8)

Enrollment in postsecondary Health Sciences programs (32%) continues to be the most popular choice among adult upgrading students. Selection of a Technology Program is second (19%) and Business is third (17%). Selection of a Trades or Skills program continues to be the least popular choice at 9%. Selection of a Health Sciences program continues to increase from 27% to 32%. This year for the first time enrollment in Trades and Skills rose from 5% to 9%. It is worth noting that Health Sciences and Technology programs require the highest science and mathematics prerequisites for admission.

Enrollment by number of semesters which was unchanged for 2007-2008 has changed in 2008-2009. Enrollment in 1-2 semester programs rose from 29% to 33.5% while enrollment in 3 – 4 semester programs declined from 54% to 49%. Although the number enrolling in 3- 4 semester programs declined this is still the most frequently chosen option. Clearly, the majority of adult upgrading graduates are prepared to make the necessary long term commitment of time to achieve their educational goals.

MEASURES OF SUCCESS

First Semester Pass Rates (Charts 9 – 16)

The overall pass rate for students in all programs is 82%; 9% withdraw principally because of financial reasons; 9% do not achieve the GPA required to continue in the postsecondary program of their choice. Charts 10 -16 provide pass rates for each of the six program categories. Health Sciences leads the way with 89%.

Grade Point Averages (Charts 17 – 23)

The average GPA for successful students by program category varies from a low of 2.83 in the Other category programs to a high of 3.33 in Health Sciences.

Enrollment for Second Semester (Charts 24 – 30)

In all program categories except GAS (59%), Other (65%) and Trades and Skills (65%) more than 70% of eligible students enrolled in the second semester of their program. 5% or fewer students switched programs in all program categories in the second semester.

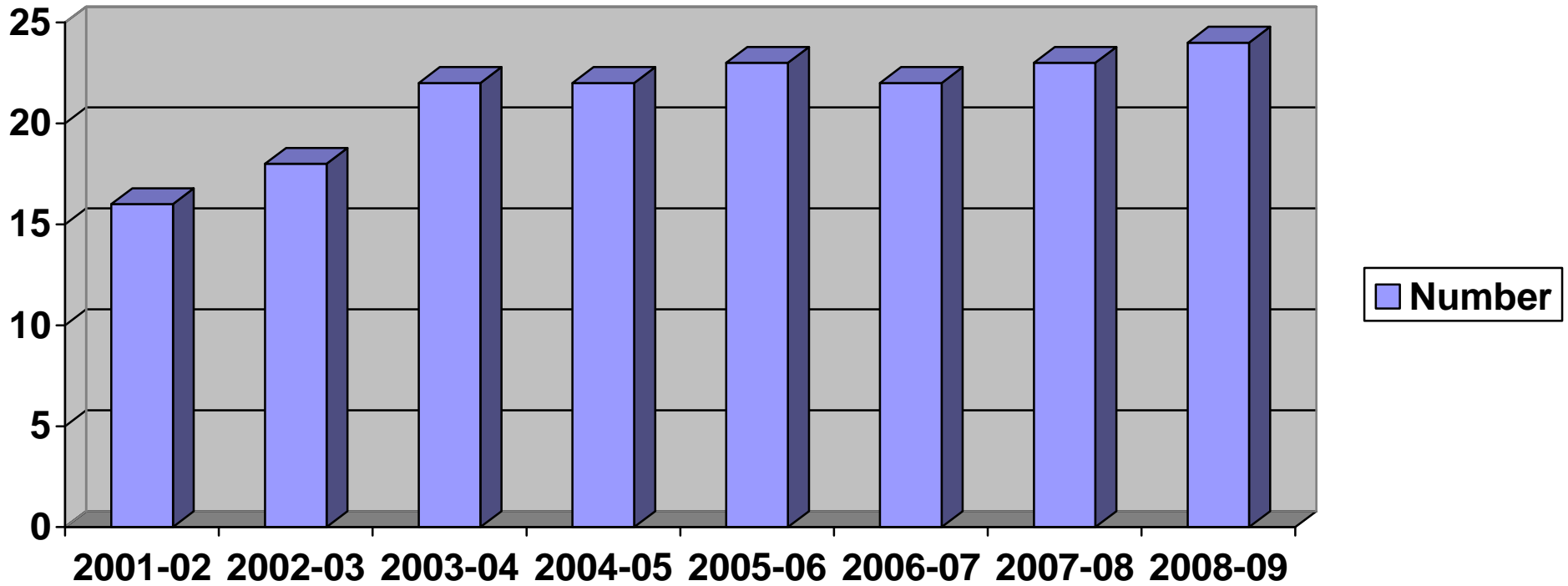
Conclusion

In terms of retention and GPA, students from adult upgrading programs who move on to postsecondary programming continue to demonstrate they are well prepared both academically and personally to succeed. Furthermore, the low rate of program changes indicates adult upgrading programs have helped them make the appropriate program selections.

The College Sector Committee hopes that this study helps demonstrate to current and potential college upgrading students, college personnel, funders and the community that time spent in college upgrading programs is a **guaranteed investment in the future**.

CHART 1

NUMBER OF PARTICIPATING COLLEGES



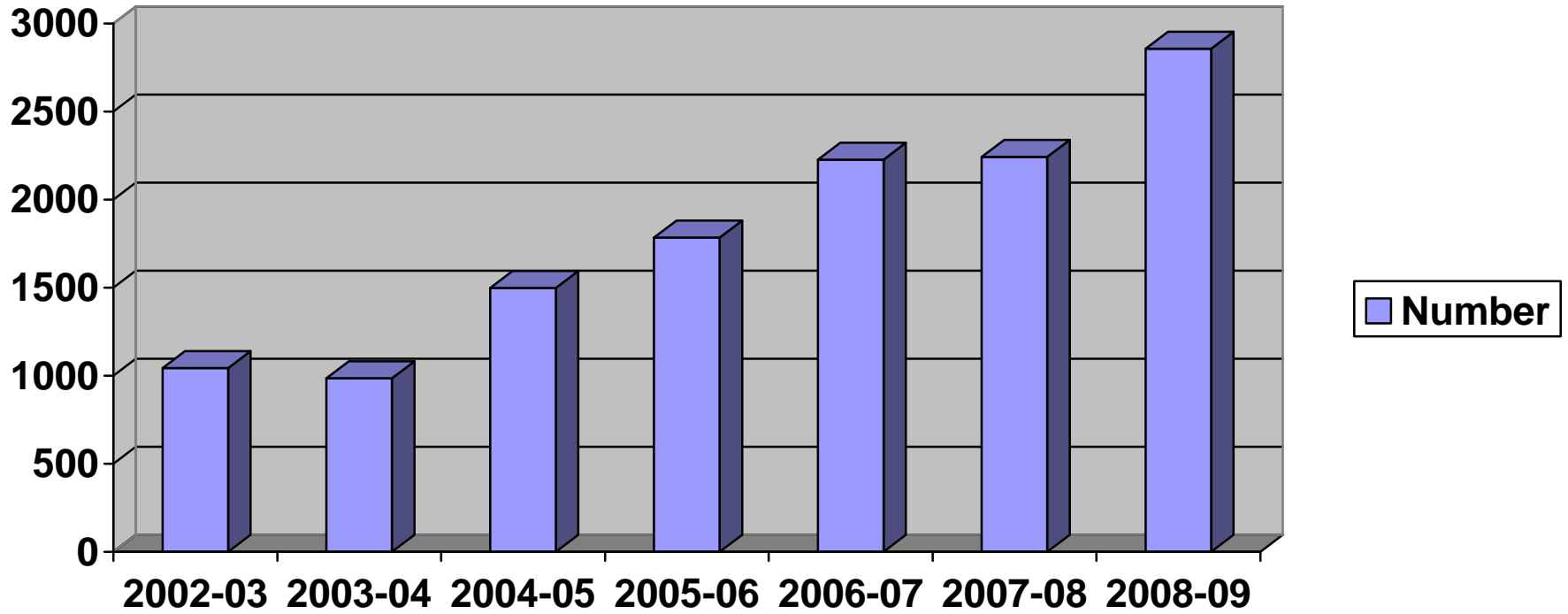
Years	2002-03	2003-04	2004-05	2005-06	2006-07	2007-08	2008-09
Number of Colleges	18	22	22	23	22	23	24

CHART 2**PARTICIPATING COLLEGES**

College	2002-03	2003-04	2004-05	2005-06	2006-07	2007-08	2008-09
Algonquin	✓	✓	✓	✓	✓	✓	✓
Boreal			✓	✓	✓	✓	✓
Cambrian	✓	✓	✓	✓	✓	✓	✓
Canadore	✓	✓	✓	✓	✓	✓	✓
Centennial	✓	✓	✓	✓	NA	✓	✓
Conestoga	✓	✓	✓	✓	✓	✓	✓
Confederation	✓	✓		✓	✓	✓	✓
Durham	✓	✓	✓	✓	✓	✓	✓
Fanshawe	✓	✓	✓	✓	✓	✓	✓
Fleming	✓	✓	✓	✓	✓	✓	✓
George Brown		✓	✓	✓	✓	✓	✓
Georgian		✓	✓	✓	✓	✓	✓
Humber	✓	✓	✓	✓	✓	✓	✓
La Cite	✓	✓	✓	✓	✓	✓	✓
Lambton	✓	✓	✓	✓	✓	✓	✓
Loyalist	✓	✓	✓	✓	✓	✓	✓
Mohawk	✓	✓	✓	✓	✓	✓	✓
Niagara	✓	✓	✓	✓	✓	✓	✓
Northern	✓	✓	✓	✓	✓	✓	✓
Sault		✓	✓	✓	✓	✓	✓
Seneca	✓	✓	✓	✓	✓	✓	✓
Sheridan		✓	✓	✓	✓	✓	✓
St. Clair	NA	NA	NA	NA	NA	NA	✓
St. Lawrence	✓	✓	✓	✓	✓	✓	✓

CHART 3

NUMBER OF STUDENTS COMPARED



Years	2002-03	2003-04	2004-05	2005-06	2006-07	2007-08	2008-09
Number of students	1091	986	1498	1786	2227	2245	2858

CHART 4 A**NUMBER OF STUDENTS BY COLLEGE**

College	2003-04	2004-05	2005-06	2006-07	2007-08	% Change	2008-09	% Change
Algonquin	86	322	496	505	505	0	541	+7%
Boreal	N/A	65	83	86	79	- 8%	76	-4%
Cambrian	130	202	243	249	256	+3%	191	-25%
Canadore	30	22	16	18	27	+50%	31	+15%
Centennial	23	20	25	NA	19	NA	37	+95%
Conestoga	56	59	31	70	142	+102%	140	-1%
Confederation	68	N/A	20	249	68	-73%	75	+10%
Durham	30	71	59	61	58	-5%	37	-36%
Fanshawe	41	35	40	52	124	+139%	171	+38%
Fleming	87	124	103	168	154	-8%	166	+8%
George Brown	7	38	60	55	34	- 38%	40	+18%
Georgian	43	59	59	112	142	+27%	214	+51%
Humber	28	32	21	31	36	+16%	17	-53%
La Cite	32	22	56	37	51	+38%	49	-4%
Lambton	15	9	12	16	18	+12.5%	18	--
Loyalist	20	46	56	45	54	+20%	56	+4%
Mohawk	28	46	32	46	49	+6.5%	73	+49%
Niagara	27	20	23	31	17	-45%	41	+141%
Northern	60	40	89	36	64	+78%	397	+520%
Sault	36	14	23	29	22	-24%	59	+168%
Seneca	24	136	52	81	71	-12%	63	-11%
Sheridan	43	32	105	142	154	+8%	138	-10%
St. Clair	NA	NA	NA	NA	NA	NA	86	--
St. Lawrence	72	84	82	108	98	-9%	142	+45%
TOTAL	986	1498	1786	2227	2245	+1%	2858	+27%

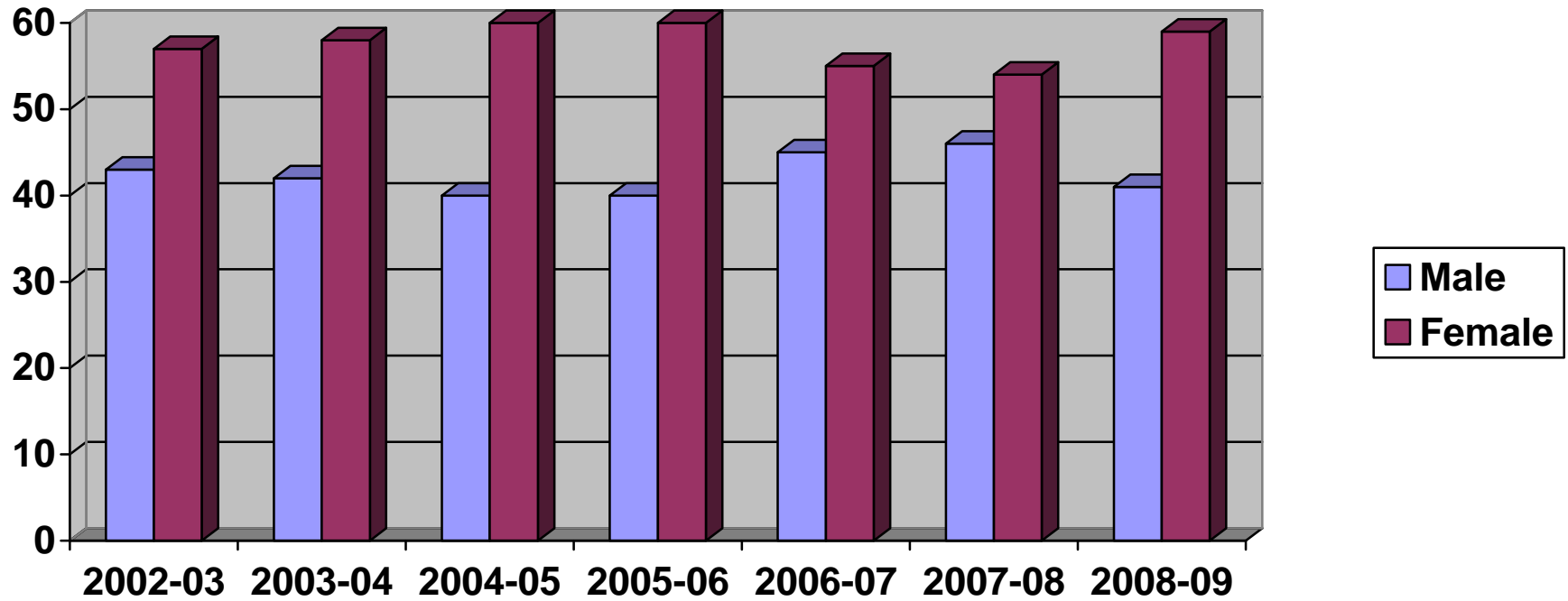
CHART 4 B**INDIVIDUAL COLLEGE PERCENTAGE SHARE OF THE PROVINCIAL TOTAL**

College	2007 - 08	% of Provincial Total
Algonquin	541	19
Boreal	76	3
Cambrian	191	7
Canadore	31	1
Centennial	37	1
Conestoga	140	5
Confederation	75	3
Durham	37	1
Fanshawe	171	6
Fleming	166	6
George Brown	40	1
Georgian	214	7
Humber	17	.5
La Cite	49	2
Lambton	18	.5
Loyalist	56	2
Mohawk	73	3
Niagara	41	1
Northern	397	14
Sault	59	2
Seneca	63	2
Sheridan	138	5
St. Clair	86	3
St. Lawrence	142	5

TOTAL	2858	100%
-------	------	------

CHART 5

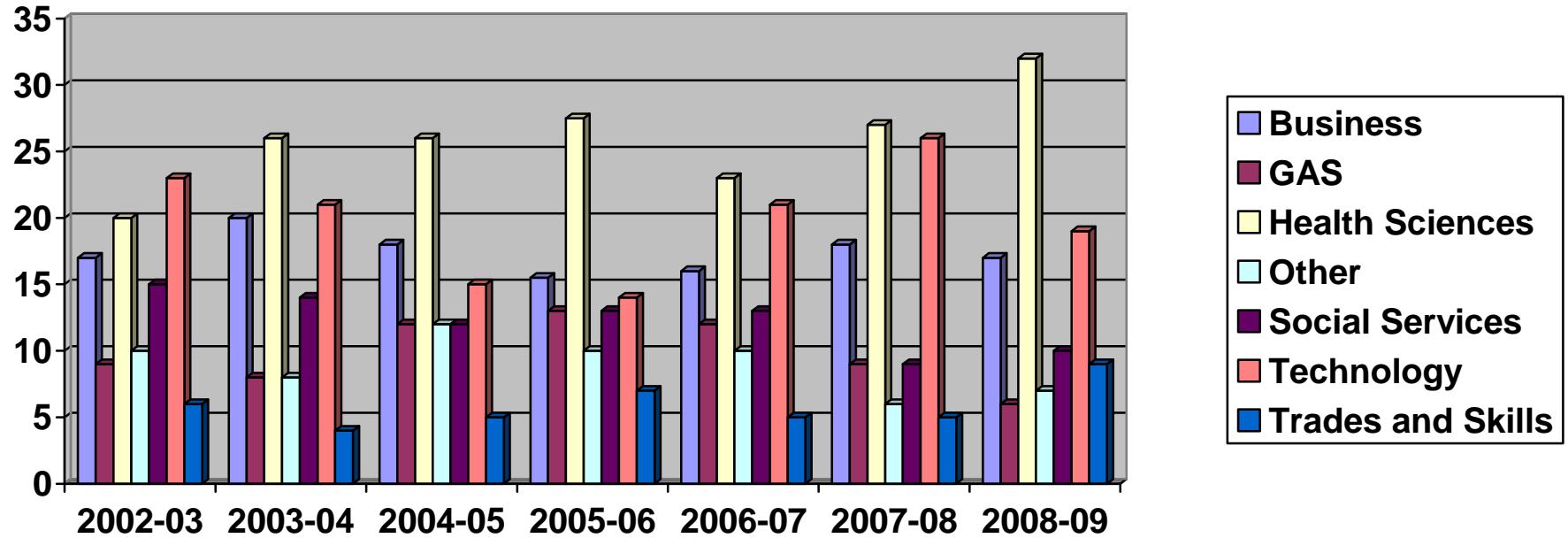
MALE/FEMALE DISTRIBUTION



Years	2002-03	2003-04	2004-05	2005-06	2006-07	2007-08	2008-09
Male	43 %	42%	40%	40%	45%	46%	41%
Female	57 %	58%	60%	60%	55%	54%	59%

CHART 6

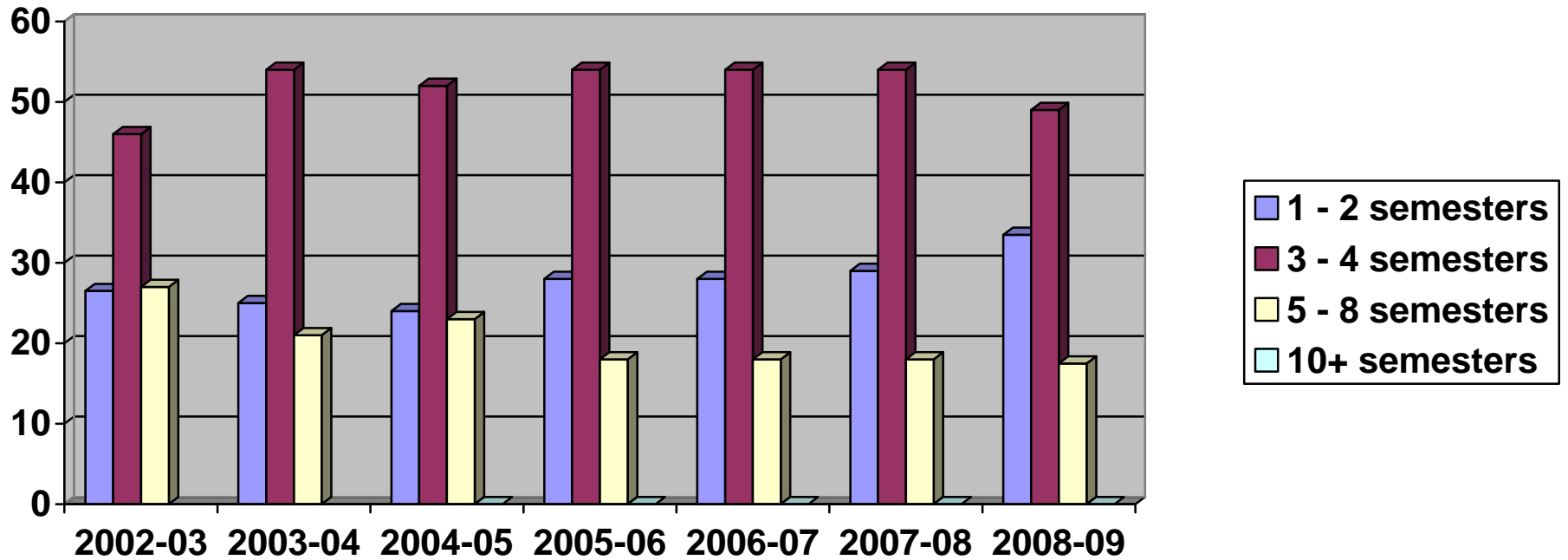
PARTICIPATION BY PROGRAM CATEGORY



Program Category	2002-03	2003-04	2004-05	2005-06	2006-07	2007-08	2008-09
Business	17 %	20%	18%	15.5%	16%	18%	17%
General Arts & Sciences	9 %	8%	12%	13%	12%	9%	6%
Health Sciences	20 %	26%	26%	27.5%	23%	27%	32%
Other	10 %	8%	12%	10%	10%	6%	7%
Social Services	15 %	14%	12%	13%	13%	9%	10%
Technology	23 %	21%	15%	14%	21%	26%	19%
Trades & Skills	6 %	4%	5%	7%	5%	5%	9%

CHART 7

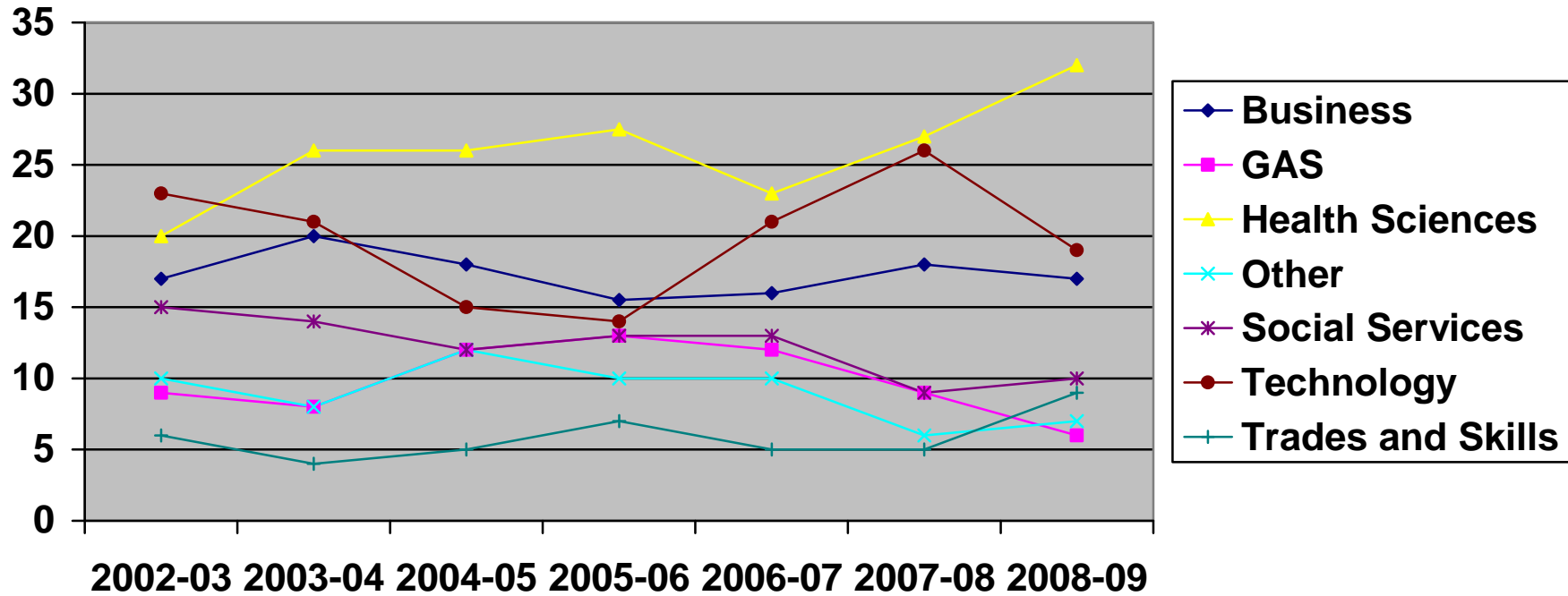
PARTICIPATION BY PROGRAM DURATION



	2002-03	2003-04	2004-05	2005-06	2006-07	2007-08	2008-09
1 – 2 semesters	26.5 %	25%	24%	28%	28%	29%	33.5%
3 – 4 semesters	46 %	54%	52%	54%	54%	54%	49%
5 – 8 semesters	27.5 %	21%	23%	18%	18%	18%	17.5%
10+ semesters			0%	0%	0%	0%	0%

CHART 8

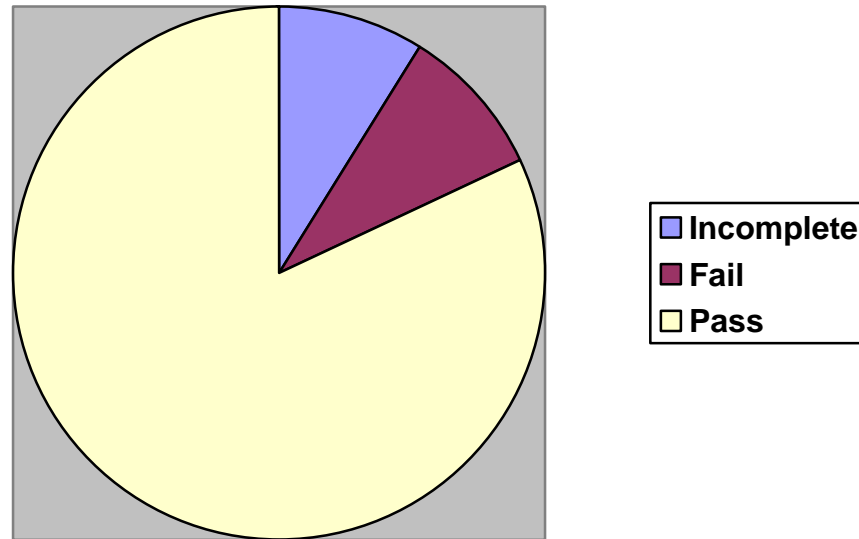
PARTICIPATION BY PROGRAM CATEGORY



Program Category	2002-03	2003-04	2004-05	2005-06	2006-07	2007-08	2008-09
Business	17 %	20%	18%	15.5%	16%	18%	17%
General Arts & Sciences	9 %	8%	12%	13%	12%	9%	6%
Health Sciences	20 %	26%	26%	27.5%	23%	27%	32%
Other	10 %	8%	12%	10%	10%	6%	7%
Social Services	15 %	14%	12%	13%	13%	9%	10%
Technology	23 %	21%	15%	14%	21%	26%	19%
Trades & Skills	6 %	4%	5%	7%	5%	5%	9%

CHART 9

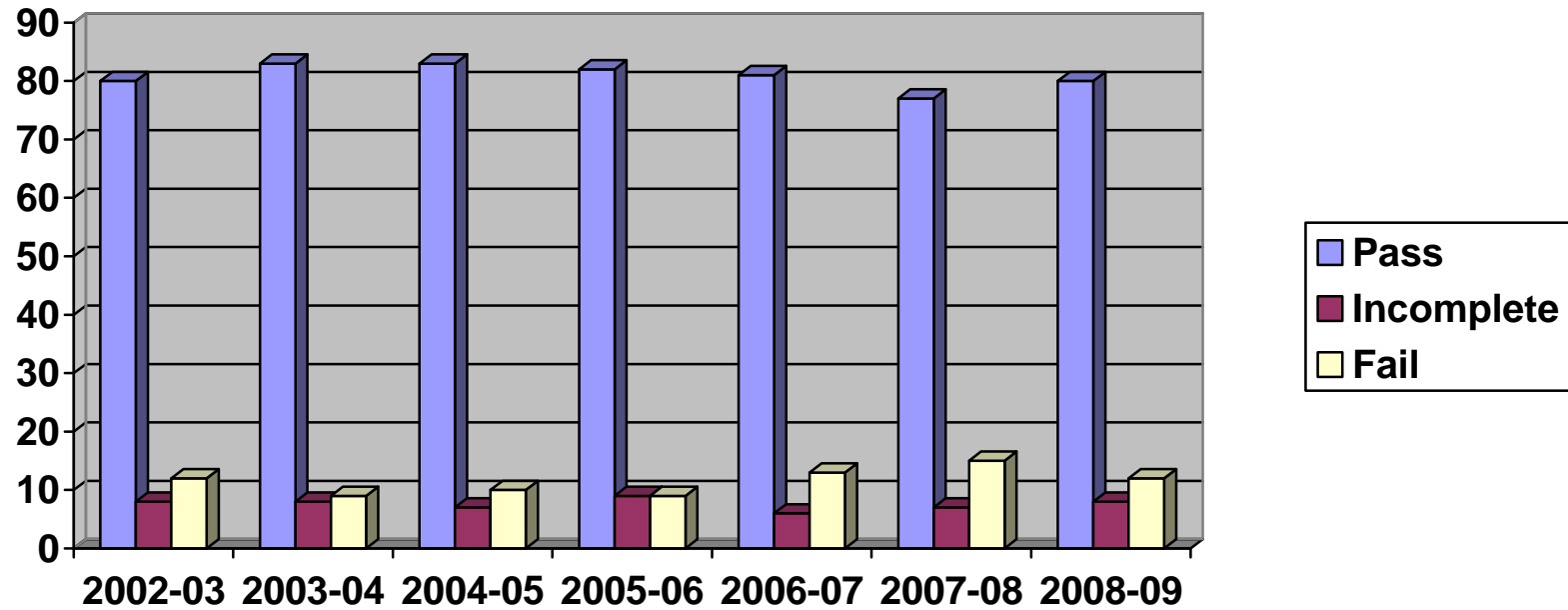
**FIRST SEMESTER RESULTS
ALL PROGRAMS**



Incomplete	9%
Fail	9%
Pass	82%

CHART 10

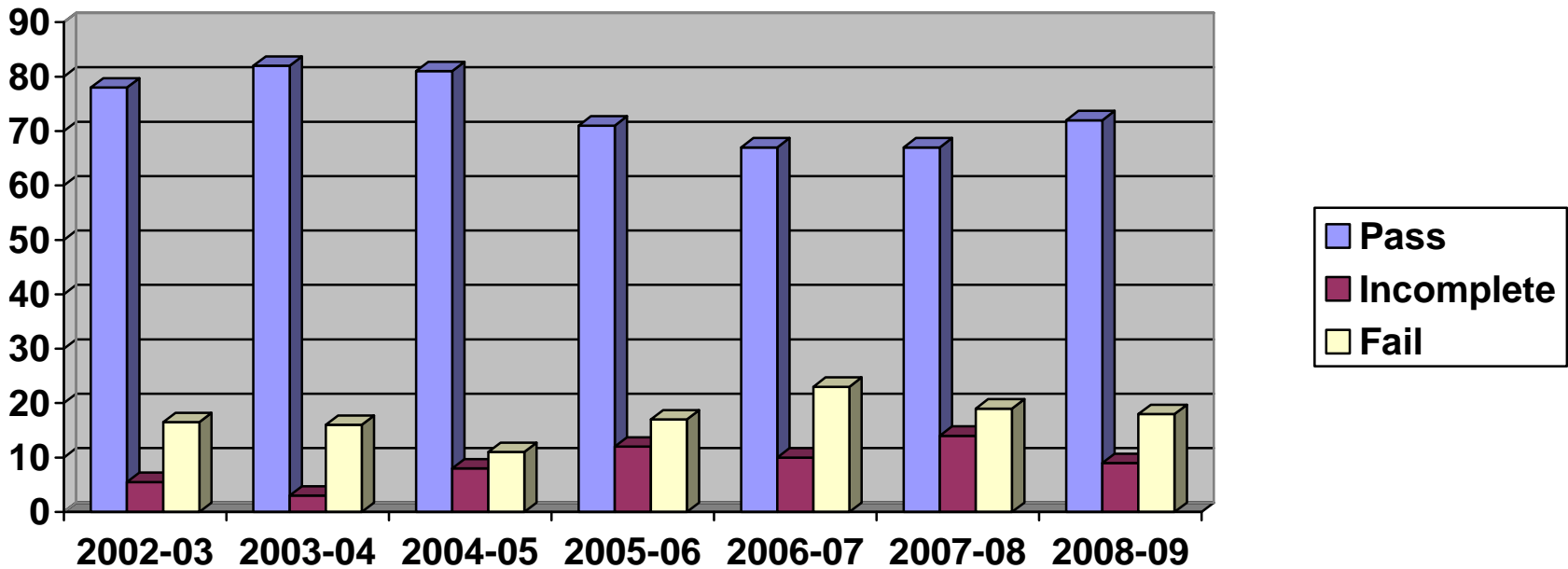
**BUSINESS
1ST SEMESTER RESULTS**



	2002-03	2003-04	2004-05	2005-06	2006-07	2007-08	2008-09
Pass	80 %	83%	83%	82%	81%	77%	80%
Incomplete	8 %	8%	7%	9%	6%	7%	8%
Fail	12 %	9%	10%	9%	13%	15%	12%

CHART 11

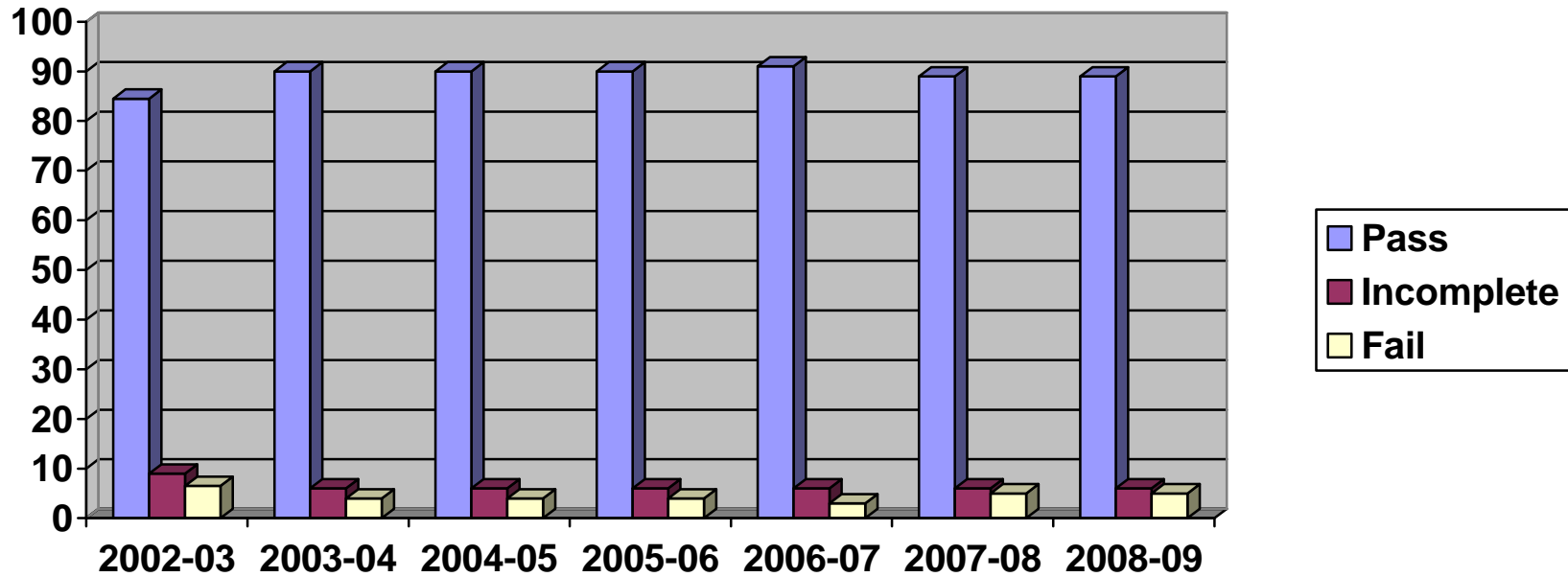
**GENERAL ARTS & SCIENCES
1ST SEMESTER RESULTS**



	2002-03	2003-04	2004-05	2005-06	2006-07	2007-08	2008-09
Pass	78 %	82%	81%	71%	67%	67%	72%
Incomplete	5 %	3%	8%	12%	10%	14%	9%
Fail	17 %	16%	11%	17%	23%	19%	18%

CHART 12

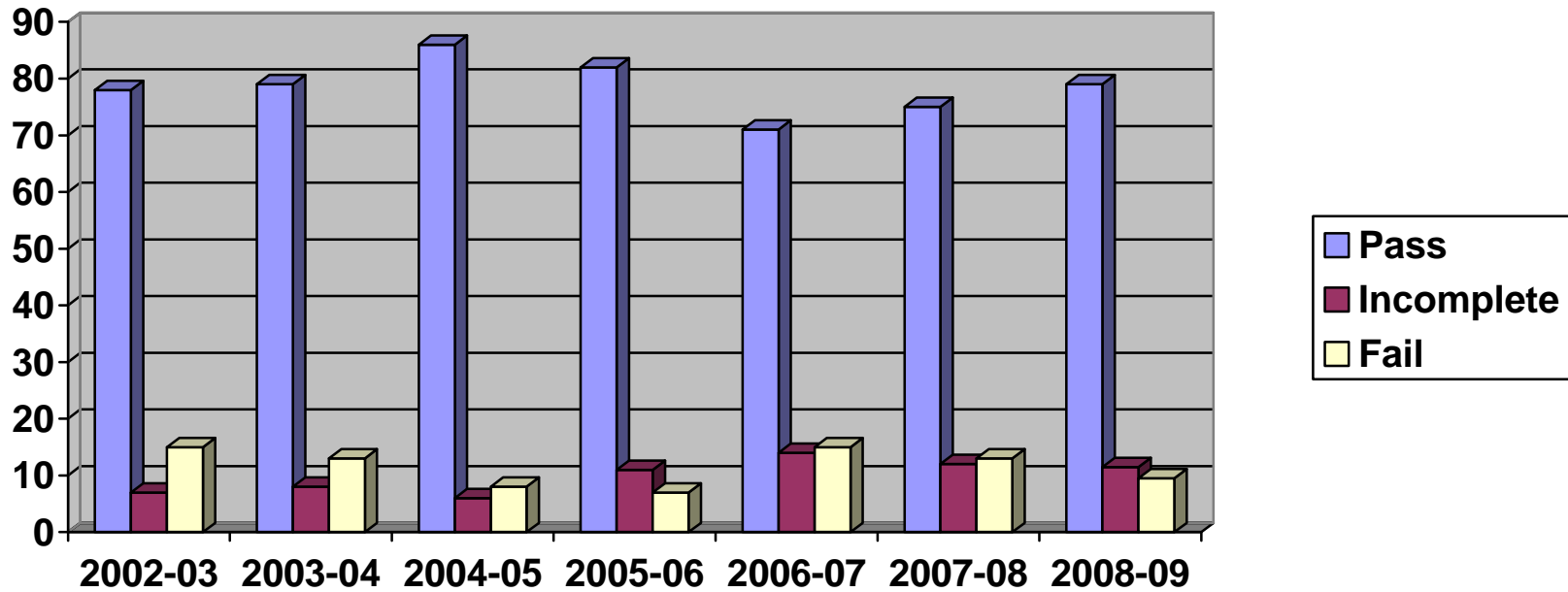
**HEALTH SCIENCES
1ST SEMESTER RESULTS**



	2002-03	2003-04	2004-05	2005-06	2006-07	2007-08	2008-09
Pass	84 %	90%	90%	90%	91%	89%	89%
Incomplete	9 %	6%	6%	6%	6%	6%	6%
Fail	7 %	4%	4%	4%	3%	5%	5%

CHART 13

**OTHER
1ST SEMESTER RESULTS**

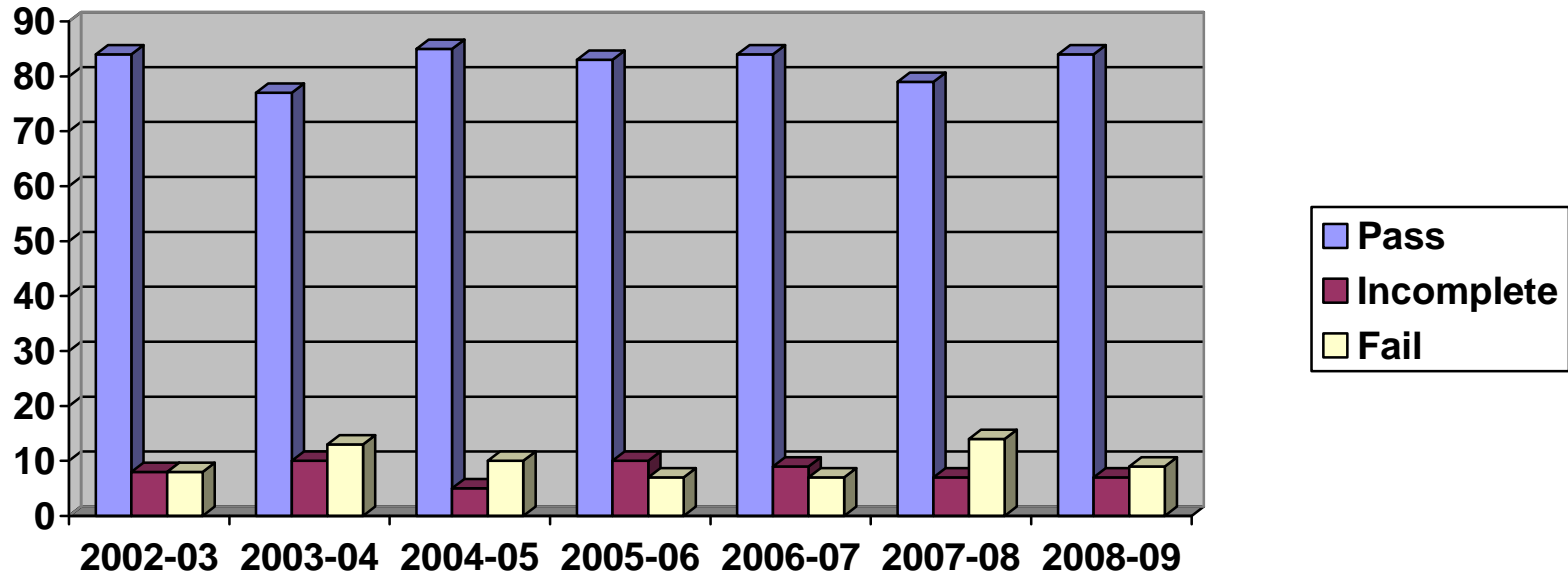


	2002-03	2003-04	2004-05	2005-06	2006-07	2007-08	2008-09
Pass	79 %	79%	86%	82%	71%	75%	79%
Incomplete	7 %	8%	6%	11%	14%	12%	11.5%
Fail	14 %	13%	8%	7%	15%	13%	9.5%

OTHER includes courses related to Culinary Studies, Fashion, Hospitality and Tourism, Media, Sports and Leisure Management

CHART 14

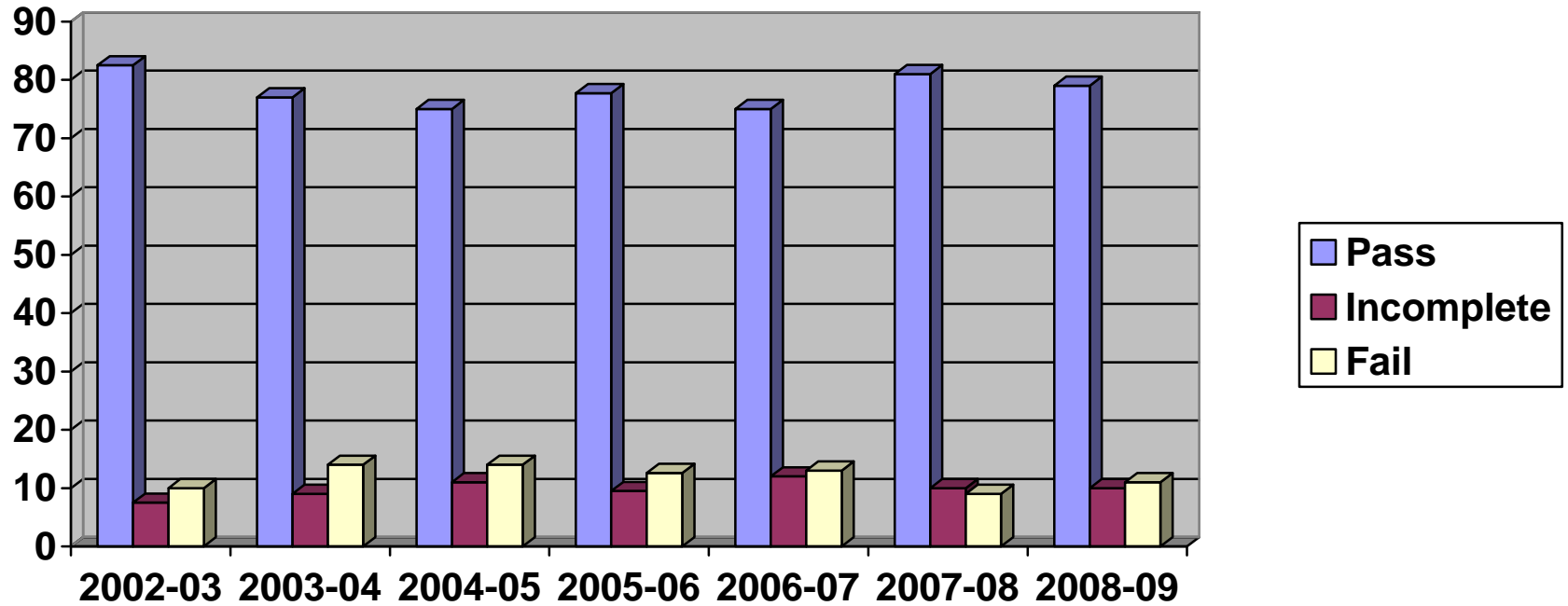
**SOCIAL SERVICES
1ST SEMESTER RESULTS**



	2002-03	2003-04	2004-05	2005-06	2006-07	2007-08	2008-09
Pass	84 %	77%	85%	83%	84%	79%	84%
Incomplete	8 %	10%	5%	10%	9%	7%	7%
Fail	8 %	13%	10%	7%	7%	14%	9%

CHART 15

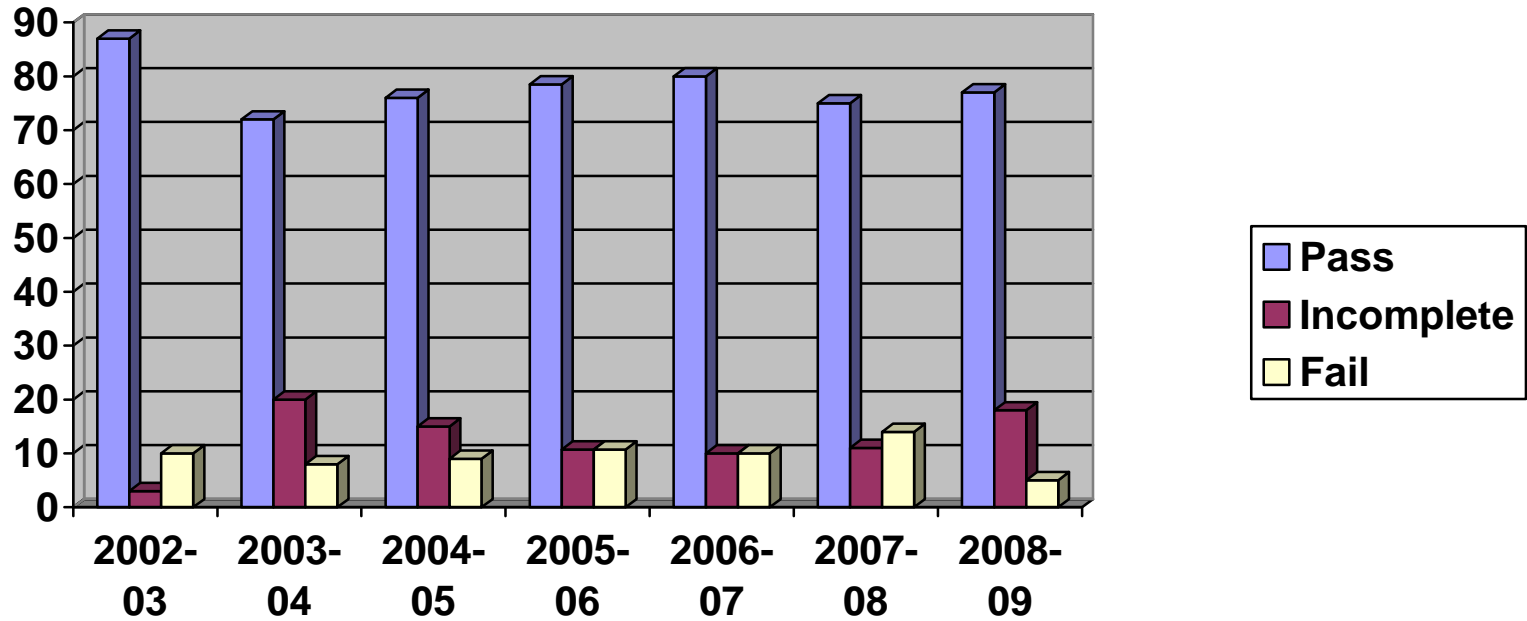
**TECHNOLOGY
1ST SEMESTER RESULTS**



	2002-03	2003-04	2004-05	2005-06	2006-07	2007-08	2008-09
Pass	82.5 %	77%	75%	77.7%	75%	81%	79%
Incomplete	7.5 %	9%	11%	9.5%	12%	10%	10%
Fail	10 %	14%	14%	12.6%	13%	9%	11%

CHART 16

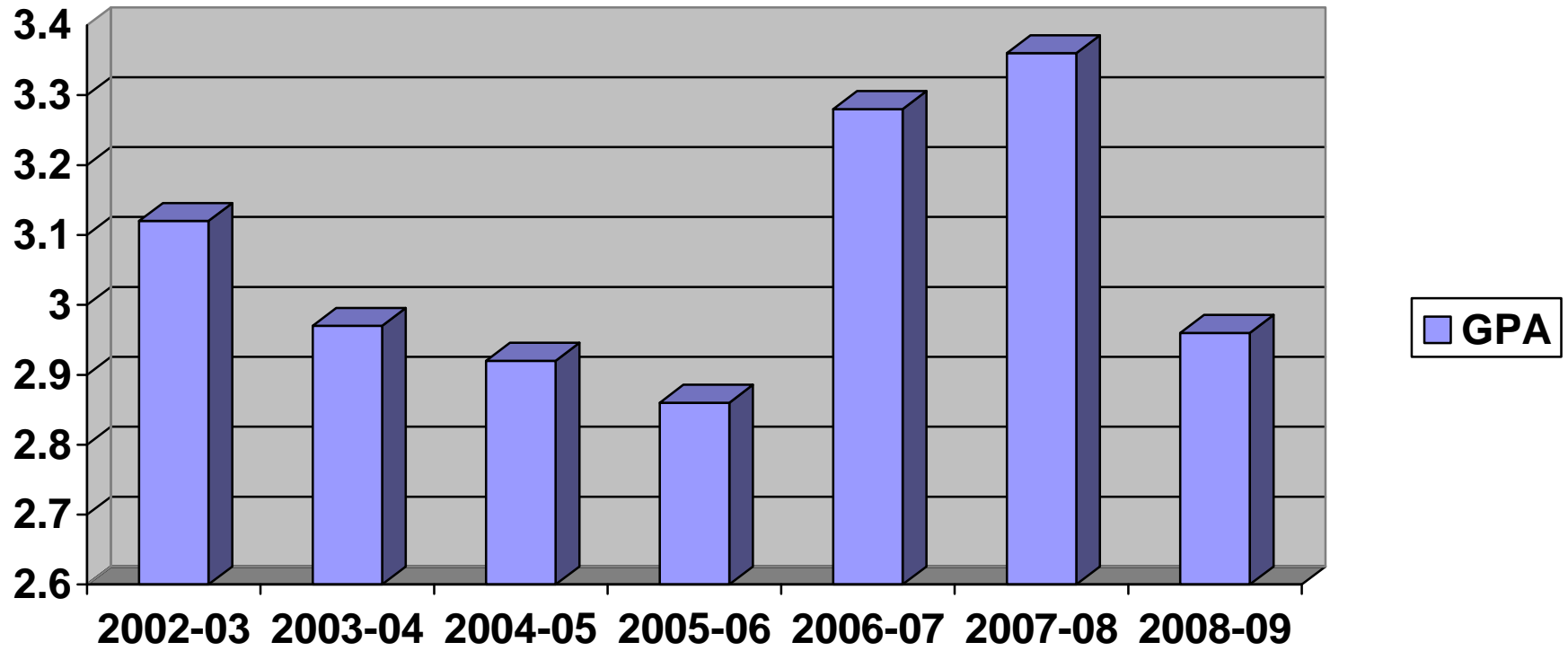
**TRADES & SKILLS
1ST SEMESTER RESULTS**



	2002-03	2003-04	2004-05	2005-06	2006-07	2007-08	2008-09
Pass	87 %	72%	76%	78.5%	80%	75%	77%
Incomplete	3 %	20%	15%	10.7%	10%	11%	18%
Fail	10 %	8%	9%	10.7%	10%	14%	5%

CHART 17

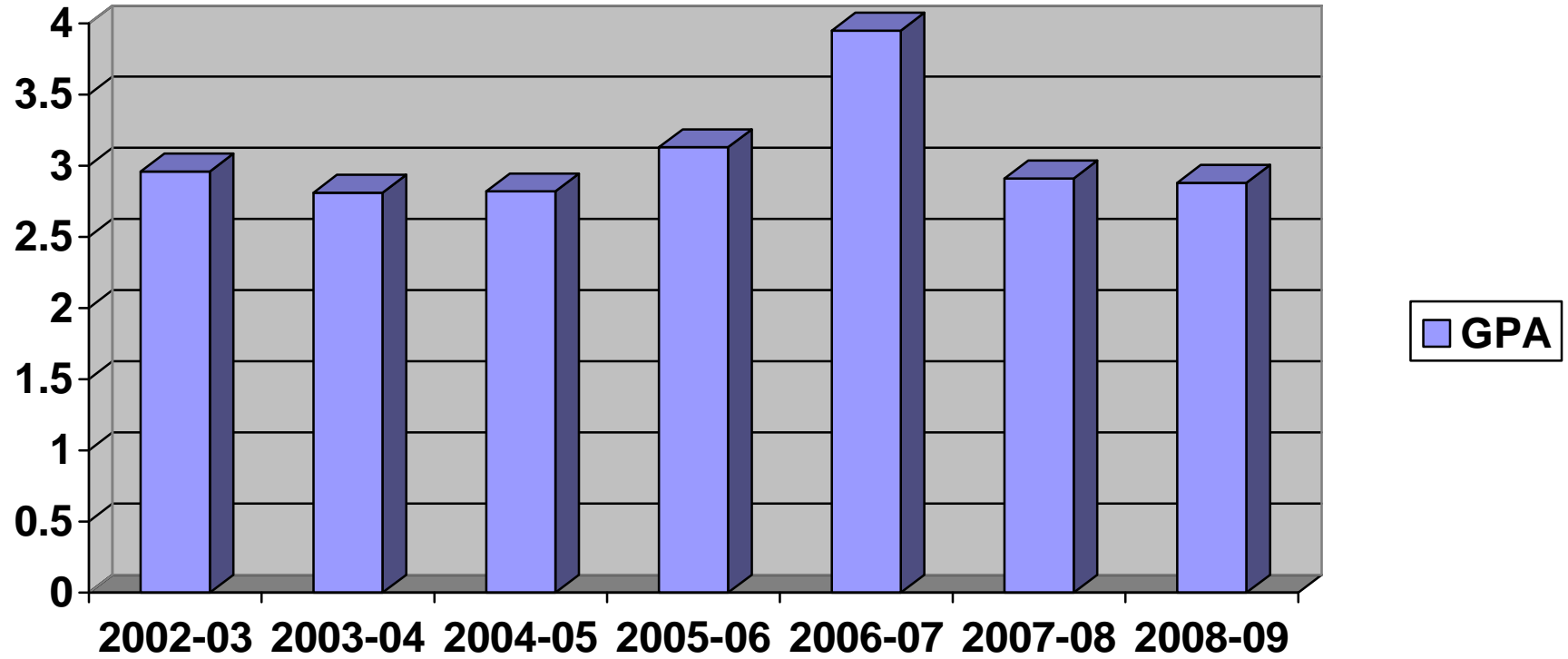
**BUSINESS
GPA END OF FIRST SEMESTER**



	2002-03	2003-04	2004-05	2005-06	2006-07	2007-08	2008-09
GPA	3.12	2.97	2.92	2.86	3.28	3.36	2.96

CHART 18

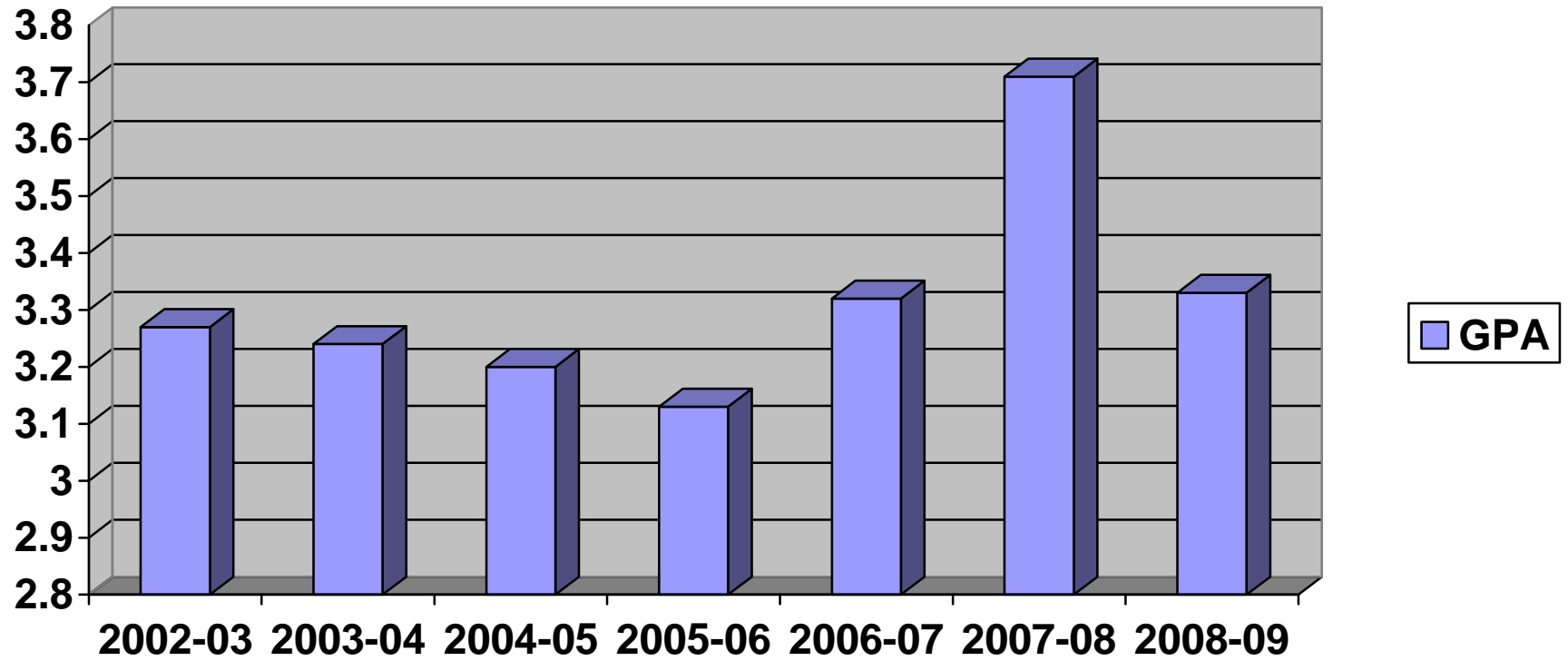
**GENERAL ARTS & SCIENCES
GPA END OF FIRST SEMESTER**



	2002-03	2003-04	2004-05	2005-06	2006-07	2007-08	2008-09
GPA	2.96	2.81	2.82	3.13	3.42	2.91	2.88

CHART 19

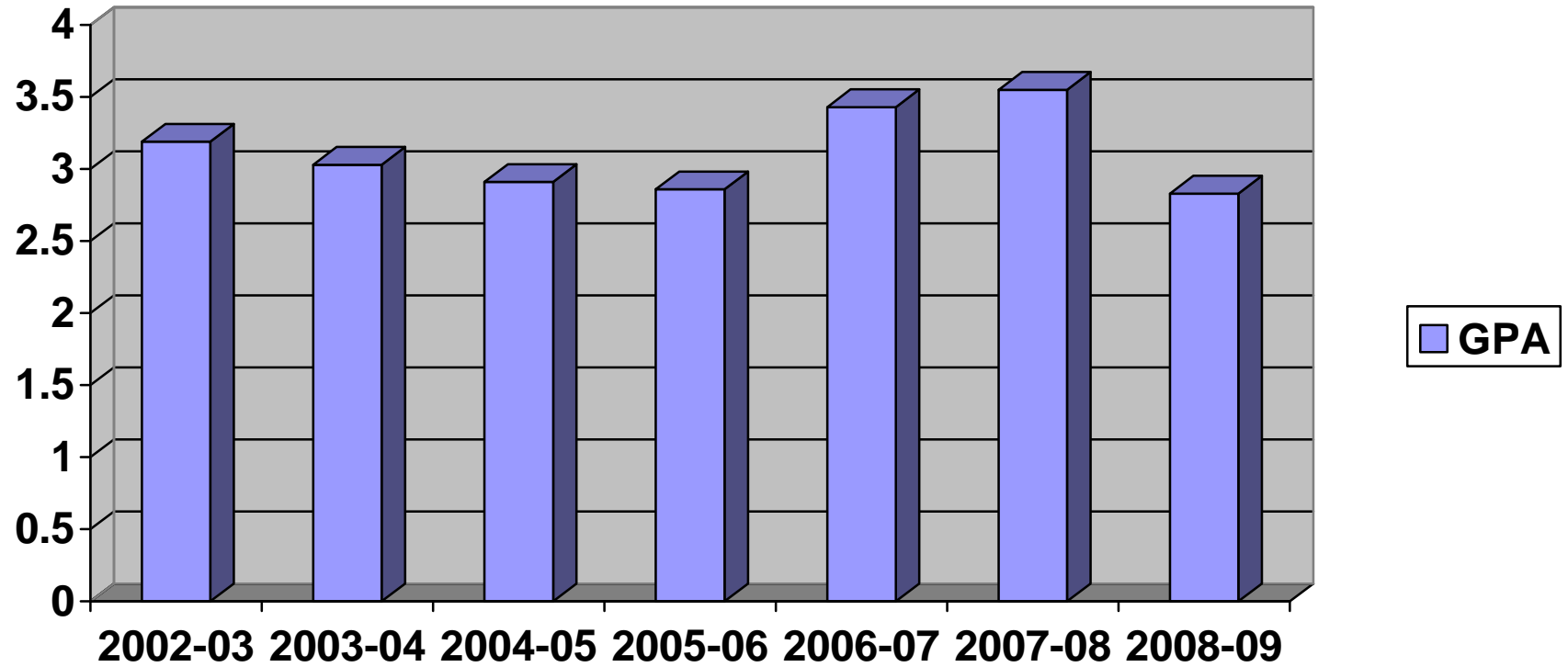
**HEALTH SCIENCES
GPA END OF FIRST SEMESTER**



	2002-03	2003-04	2004-05	2005-06	2006-07	2007-08	2008-09
GPA	3.27	3.24	3.20	3.13	3.32	3.71	3.33

CHART 20

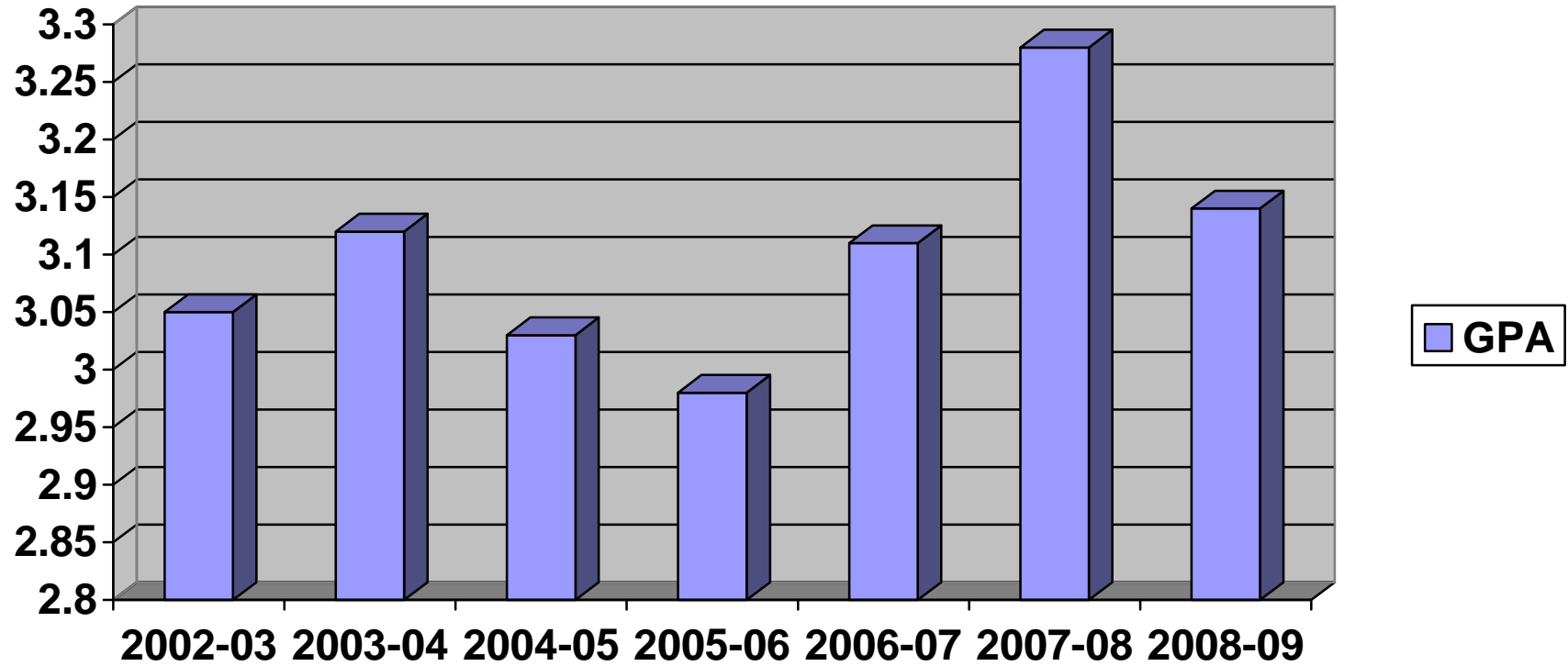
**OTHER
GPA END OF FIRST SEMESTER**



	2002-03	2003-04	2004-05	2005-06	2006-07	2007-08	2008-09
GPA	3.19	3.03	2.91	2.86	3.43	3.55	2.83

CHART 21

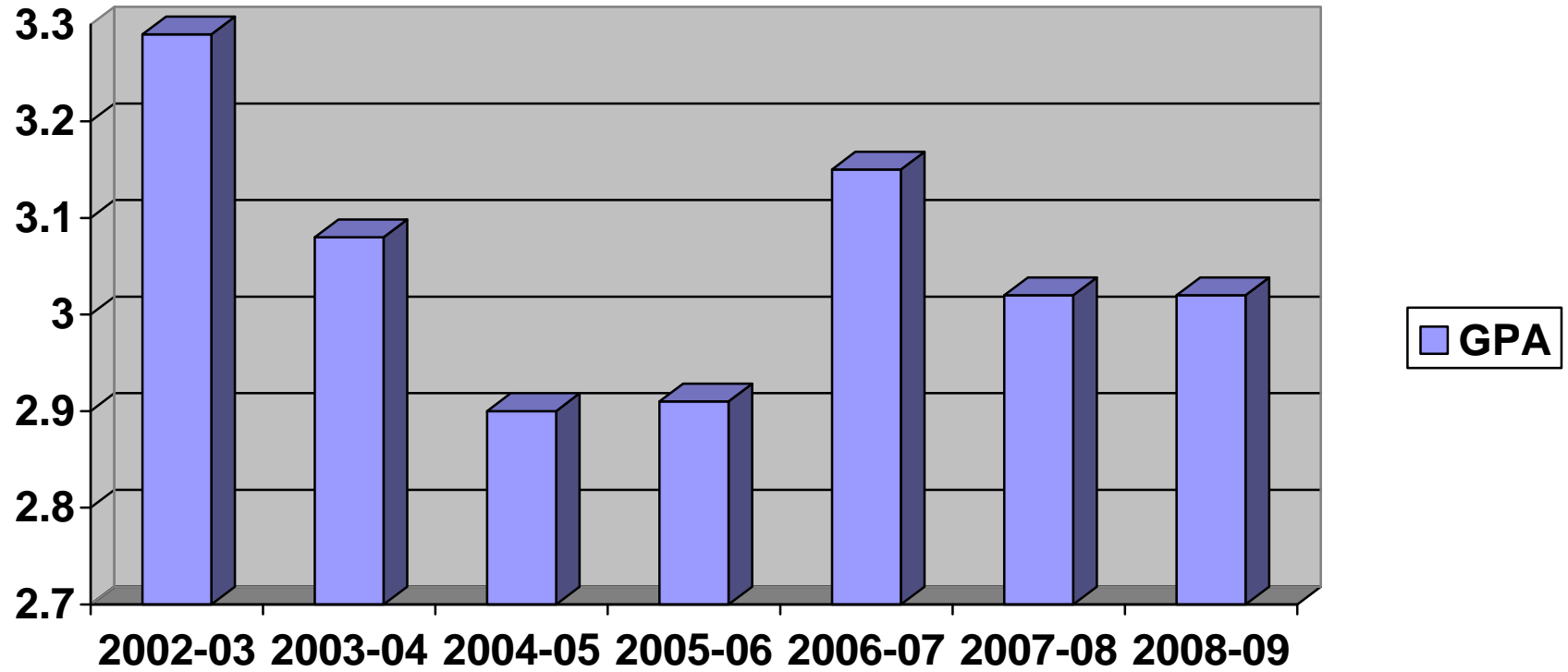
**SOCIAL SERVICES
GPA END OF FIRST SEMESTER**



	2002-03	2003-04	2004-05	2005-06	2006-07	2007-08	2008-09
GPA	3.05	3.12	3.03	2.98	3.11	3.28	3.14

CHART 22

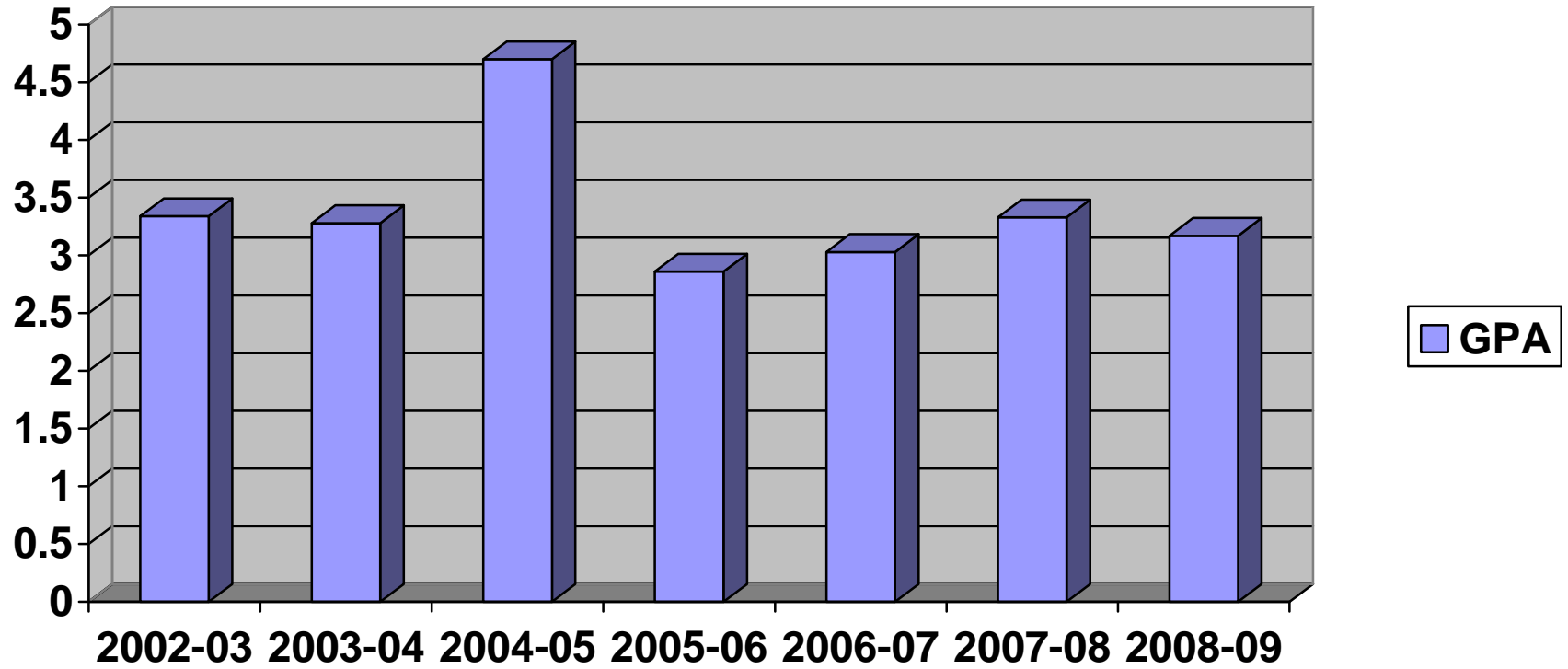
**TECHNOLOGY
GPA END OF FIRST SEMESTER**



	2002-03	2003-04	2004-05	2005-06	2006-07	2007-08	2008-09
GPA	3.29	3.08	2.90	2.91	3.17	3.02	3.02

CHART 23

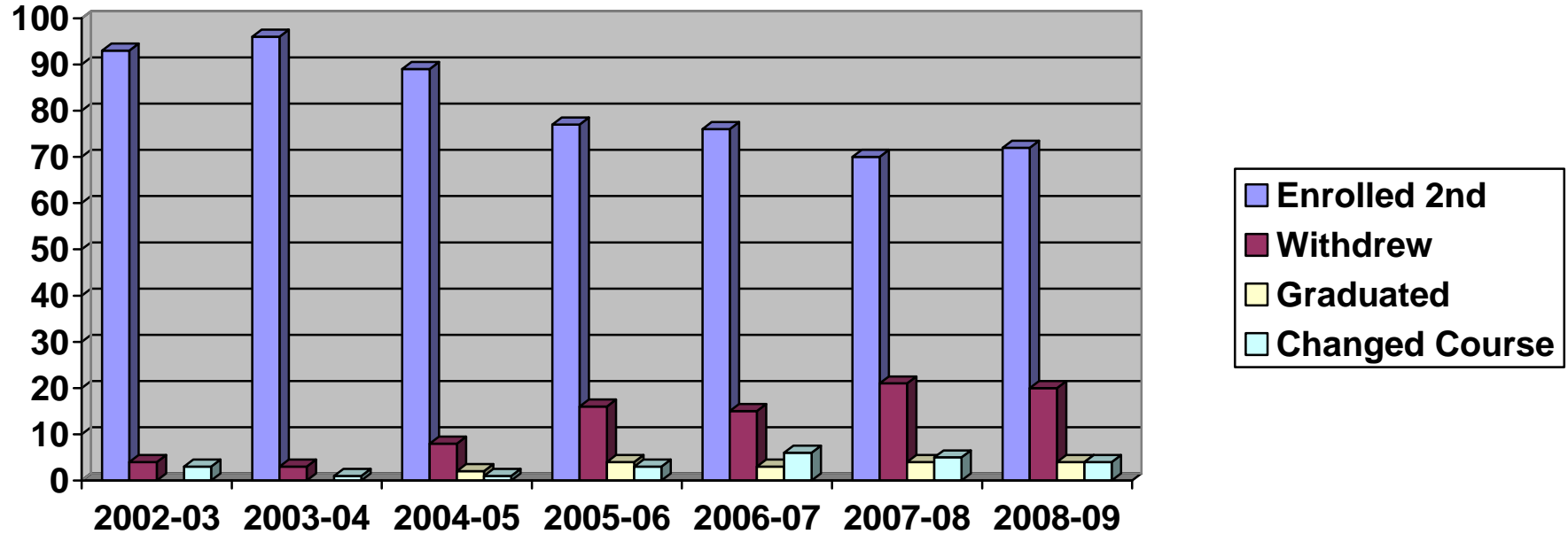
**TRADES & SKILLS
GPA END OF FIRST SEMESTER**



	2002-03	2003-04	2004-05	2005-06	2006-07	2007-08	2008-09
GPA	3.34	3.28	4.70	2.86	3.03	3.33	3.17

CHART 24

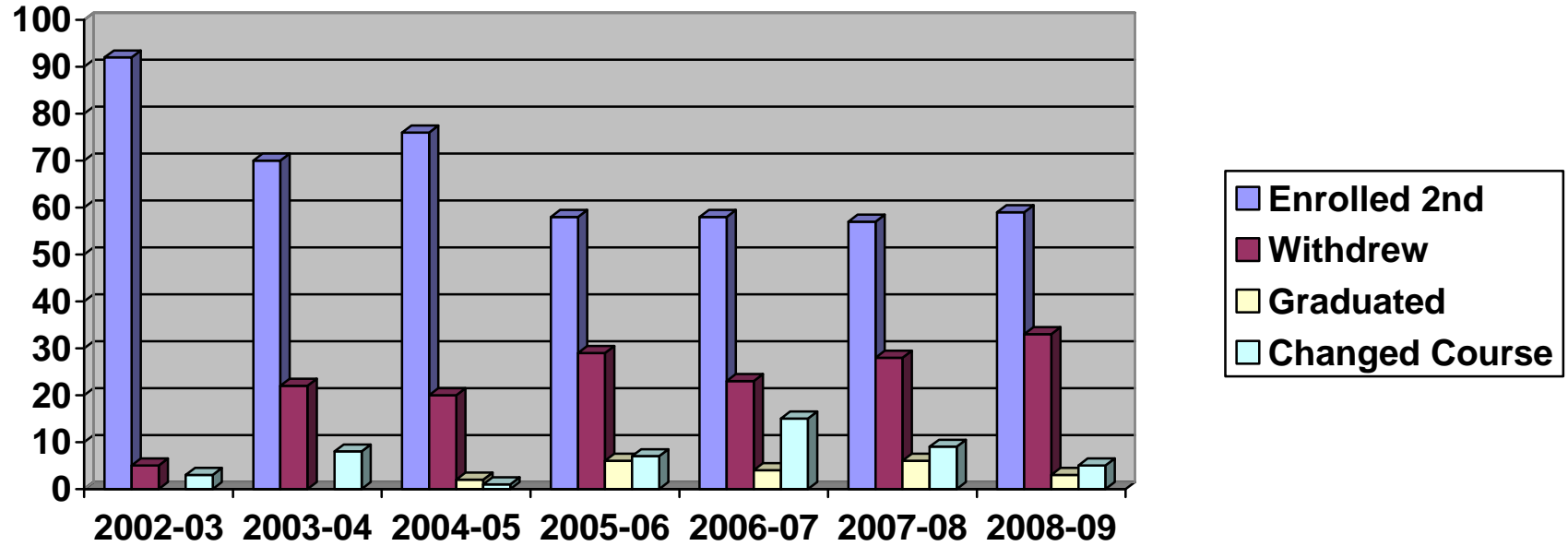
**BUSINESS
ENROLMENT STATUS AT BEGINNING OF SECOND SEMESTER**



2 nd Semester Status	2002-03	2003-04	2004-05	2005-06	2006-07	2007-08	2008-09
Enrolled 2 nd Semester	93 %	96%	89%	77%	76%	70%	72%
Withdrew	4 %	3%	8%	16%	15%	21%	20%
Graduated	N/A	N/A	2%	4%	3%	4%	4%
Changed Course	3 %	1%	1%	3%	6%	5%	4%

CHART 25

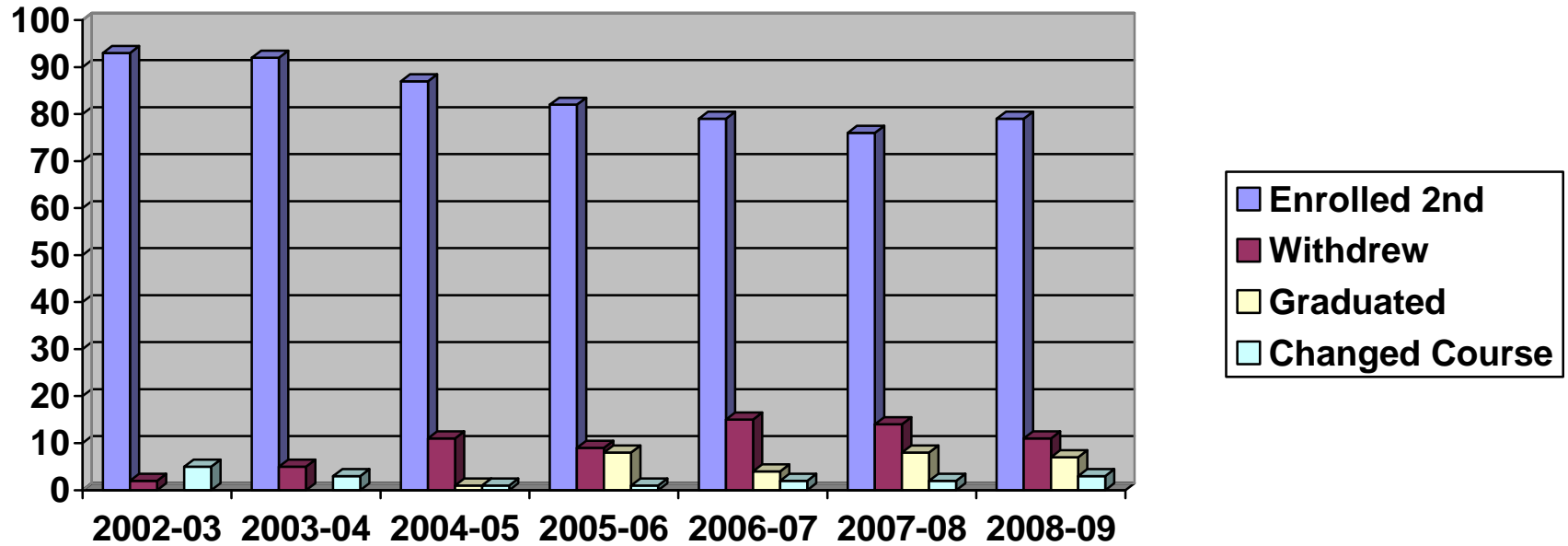
**GENERAL ARTS & SCIENCES
ENROLMENT STATUS AT BEGINNING OF SECOND SEMESTER**



2NS Semester Status	2002-03	2003-04	2004-05	2005-06	2006-07	2007-08	2008-09
Enrolled 2 nd Semester	92 %	70%	76%	58%	58%	57%	59%
Withdrew	5 %	22%	20%	29%	23%	28%	33%
Graduated	N/A	N/A	2%	6%	4%	6%	3%
Changed Course	3 %	8%	1%	7%	15%	9%	5%

CHART 26

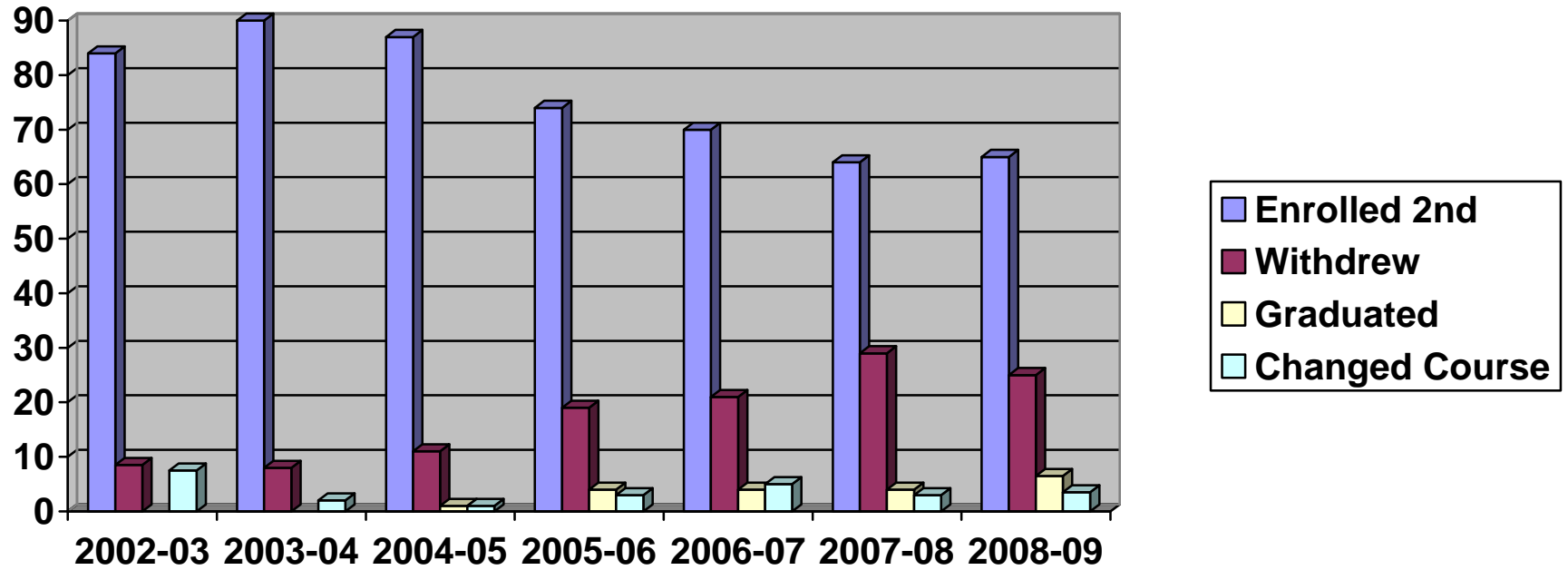
**HEALTH SCIENCES
ENROLMENT STATUS AT BEGINNING OF SECOND SEMESTER**



2 nd Semester Status	2002-03	2003-04	2004-05	2005-06	2006-07	2007-08	2008-09
Enrolled 2 nd Semester	93 %	92%	87%	82%	79%	76%	79%
Withdrew	2 %	5%	11%	9%	15%	14%	11%
Graduated	N/A	N/A	1%	8%	4%	8%	7%
Changed Course	5 %	3%	1%	1%	2%	2%	3%

CHART 27

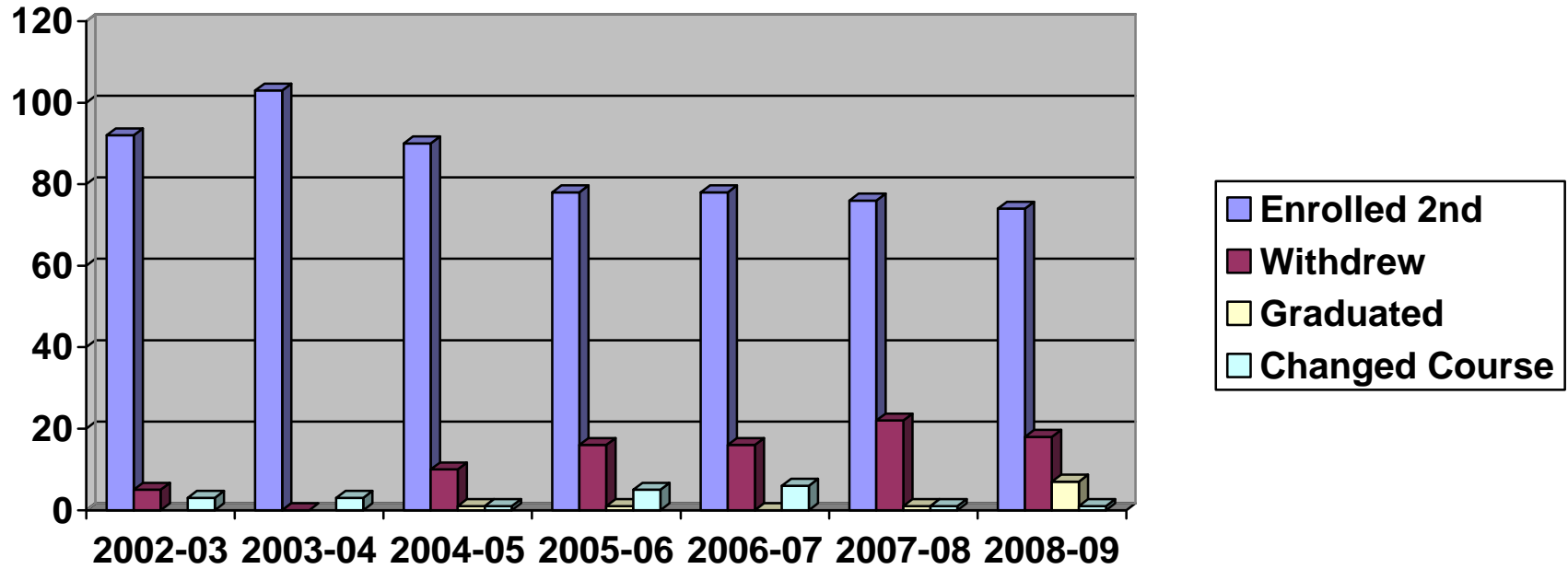
OTHER
ENROLMENT STATUS AT BEGINNING OF SECOND SEMESTER



2 nd Semester Status	2002-03	2003-04	2004-05	2005-06	2006-07	2007-08	2008-09
Enrolled 2 nd Semester	84 %	90%	87%	74%	70%	64%	65%
Withdrew	8.5 %	8%	11%	19%	21%	29%	25%
Graduated	N/A	N/A	1%	4%	4%	4%	6.5%
Changed Course	7.5 %	2%	1%	3%	5%	3%	3.5%

CHART 28

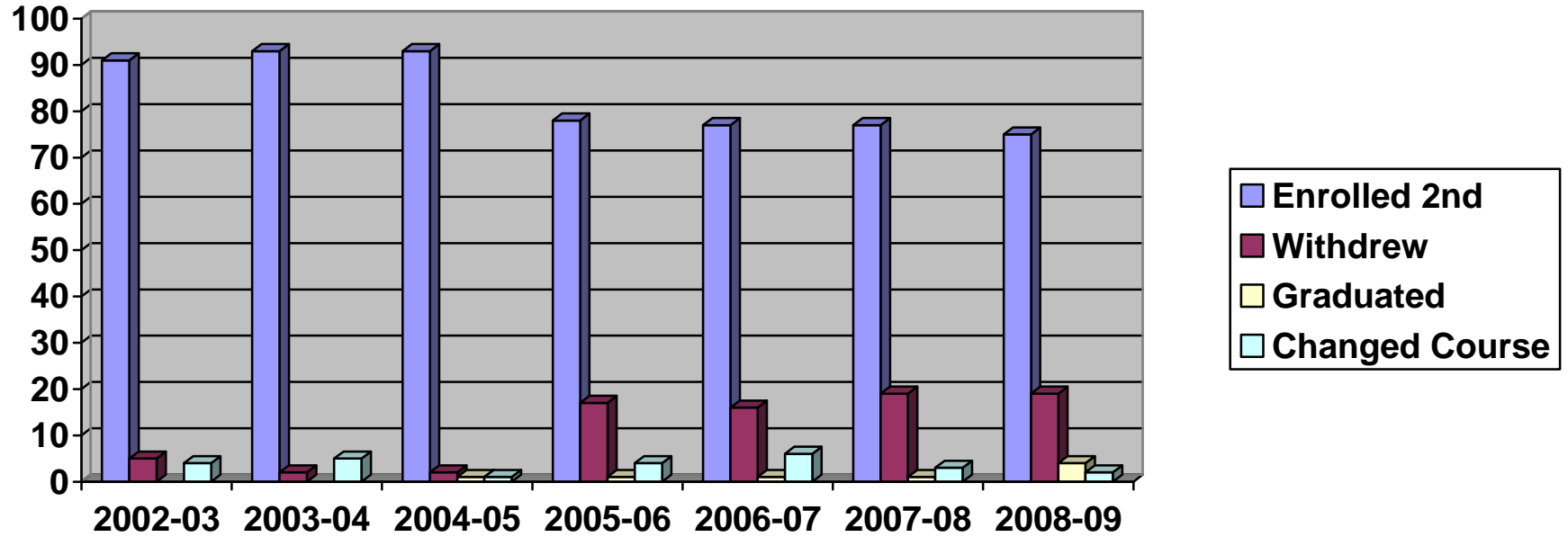
**SOCIAL SERVICES
ENROLMENT STATUS AT BEGINNING OF SECOND SEMESTER**



2 nd Semester Status	2002-03	2003-04	2004-05	2005-06	2006-07	2007-08	2008-09
Enrolled 2 nd Semester	92 %	103%	90%	78%	78%	76%	74%
Withdrew	5 %	0%	10%	16%	16%	22%	18%
Graduated	N/A	N/A	1%	1%	0%	1%	7%
Changed Course	3 %	3%	1%	5%	6%	1%	1%

CHART 29

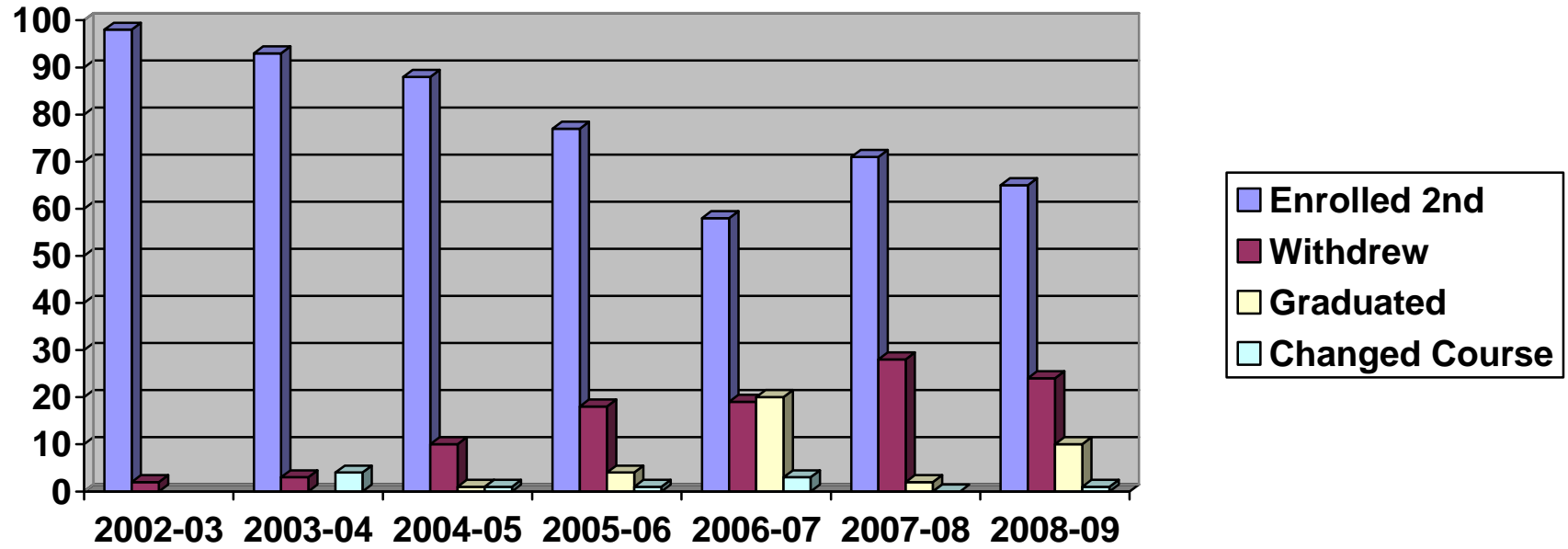
**TECHNOLOGY
ENROLMENT STATUS AT BEGINNING OF SECOND SEMESTER**



2 nd Semester Status	2002-03	2003-04	2004-05	2005-06	2006-07	2007-08	2008-09
Enrolled 2 nd Semester	91 %	93%	93%	78%	77%	77%	75%
Withdrew	5 %	2%	2%	17%	16%	19%	19%
Graduated	N/A	N/A	1%	1%	1%	1%	4%
Changed Course	4 %	5%	1%	4%	6%	3%	2%

CHART 30

**TRADES & SKILLS
ENROLMENT STATUS AT BEGINNING OF SECOND SEMESTER**



2 nd Semester Status	2002-03	2003-04	2004-05	2005-06	2006-07	2007-08	2008-09
Enrolled 2 nd Semester	98 %	93%	88%	77%	58%	71%	65%
Withdrew	2 %	3%	10%	18%	19%	28%	24%
Graduated	N/A	N/A	1%	4%	20%	2%	10%
Changed Course	0 %	4%	1%	1%	3%	0%	1%