

# **PREPARED FOR SUCCESS**

**2009-2010**

**A Study of the Success of Adult Upgrading Graduates in the First Semester of Postsecondary Programs**



**Prepared by  
College Sector Committee for Adult Upgrading**

**October, 2010**

## BACKGROUND

The initial study published in January 2001 was funded jointly by the National Literacy Secretariat and the Ministry of Training, Colleges and Universities. It examined the postsecondary outcomes of students who had moved on from upgrading programs to further education in the college system from the fall of 1995 to January 2000. This study has been ongoing for **fifteen** years. The report which follows is comprised primarily of bar graphs which compare results for the past **eight** years.

The initial study tracked fulltime students from postsecondary admission through to graduation documenting success in terms of retention and grade point average. “Students were tracked from the first semester of their studies to graduation, withdrawal or failure. Eighty three percent of these preparatory students graduated.” The 23 % of students who withdrew did so primarily for financial reasons. Sixty three percent of the students who withdrew did so during the first semester of their postsecondary studies.

The subsequent annual studies have focused exclusively on first semester results. It was decided to focus on the first semester to simplify the collection of data. Furthermore the initial study demonstrated conclusively that there is a high correlation between first semester success and eventual graduation.

In addition to reporting on GPA and successful completion of the first semester as indicators of success, this report also provides data on the number of students who enrolled in second semester in the same and different programs. The stats conclusively demonstrate that individuals who have received prior training in college academic upgrading programs achieve high marks, have the necessary commitment to complete their training and make the correct program choices prior to enrolling in postsecondary.

The initial study examined enrollment in 6 program categories: Business, General Arts and Sciences, Health, Technology, Trades and Other. Subsequent studies separated Social Services programs from the Other category. The initial report is available at [www.collegeupgradingon.ca](http://www.collegeupgradingon.ca). Annual Reports.

Once again this year all 24 colleges were able to provide data. Although all colleges were able to participate, many still have to rely on a manual examination of first semester results. This makes the process complicated and time consuming. Increasingly colleges are making the necessary arrangements to generate summaries through their college student information systems.

The CSC would like to thank all those managers and support staff who collected this data. It is not an easy task, but it is a task which must be done in order to demonstrate the positive influence which academic upgrading programs have on the success of college preparatory students in postsecondary programming.

## PARTICIPANT NUMBERS

The numbers of students identified as having moved on to postsecondary are very conservative.

- ? This report only provides information on students who have registered in fulltime postsecondary programs; it does not include students who are participating in postsecondary programming on a part time basis or through Continuing Education including Distance programming.
- ? Some colleges have also limited their collection of data to students who moved directly from upgrading to postsecondary. Consequently many students who may have “stopped out” are not included.
- ? Perhaps the most significant factor affecting a complete reflection of the numbers enrolling in postsecondary is the inability to track academic upgrading students who moved on to postsecondary programming at another college. It is not currently possible to track these students through either OCAS or individual college registration systems. This is especially significant in the GTA where there is considerable student movement to access postsecondary programming. There are individual studies by colleges across Ontario which indicate students frequently move to colleges outside their region for postsecondary. The CSC was part of the *Adult Student Pathways to Postsecondary* project led by Colleges Ontario. This project explored the possibility of developing a data collection process which would enable colleges to track the movement of upgrading students to other colleges for postsecondary.

Solving the problem of capturing the results for all Academic Upgrading participants who have moved on to postsecondary programming is becoming more complex with the increasing participation of students in ACE Distance programming. These students are registered through Distance Education departments not College Upgrading.

The CSC is very pleased with a study and report prepared on behalf of the CSC by Sue Menard published in September 2010. Sue interviewed and gathered data from college upgrading and admissions staff as well as OCAS to streamline the postsecondary application process for upgrading students. Once these processes are in place it should also be much easier to get a more complete picture of movement from upgrading to postsecondary especially between colleges. The report, “College Admissions Policy and Processes for ACE Students” can be found at [www.collegeupgradingon.ca](http://www.collegeupgradingon.ca)

## **2009-2010 Results**

### **PARTICIPATING COLLEGES**

**(Charts 1-4)**

The results documented in this report are for the Spring and Fall 2009, and Winter 2010 semesters. Student success both in terms of GPA and retention continues to be outstanding. Twenty four colleges provided data.

The number of students per college is detailed in chart four of the report. The number of students which colleges were able to track moving on to postsecondary increased from 2,858 in 2008-2009 to 3,372 for 2009-2010. This is an 18% increase. Chart 4A shows the percentage change for the past three years for all colleges.

Once again this year Algonquin has the largest number of students moving on to postsecondary at 553 or 16% of the provincial total. (Chart 4 B). Other colleges reporting significant gains are Cambrian, Centennial, Durham, Lambton, Sault and Niagara. Once again it is important to remember that, especially in the GTA, numbers are adversely affected by the inability to collect data on transfers.

### **POSTSECONDARY PROGRAM SELECTION**

**(Charts 6-8)**

Enrollment in postsecondary Health Sciences programs (30%) continues to be the most popular choice among adult upgrading students. Selection of a Technology Program is second (17%) and Business is third (16%). Selection of a Trades or Skills program (11%) has moved from the least popular choice to fourth place. It is worth noting that the Health Sciences and Technology programs require the highest science and mathematics prerequisites for admission.

Enrollment in 1-2 semester programs dropped from 33.5% to 30%. Enrollment in 3 – 4 semester programs remained constant at 49%. Participation in programs of 5 to 8 semesters rose from 17.5 % to 21%. Clearly, the majority of adult upgrading graduates are prepared to make the necessary long term commitment of time to achieve their educational goals.

### **MEASURES OF SUCCESS**

#### **First Semester Pass Rates (Charts 9 – 16)**

The overall pass rate for students in all programs is 83%; 9% withdraw principally because of financial reasons; 8% do not achieve the GPA required to continue in the postsecondary program of their choice. Charts 10 -16 provide pass rates for each of the six program categories. Health Sciences leads the way with 90%.

### **Grade Point Averages (Charts 17 – 23)**

The average GPA for successful students by program category varies from a low of 2.99 in GAS programming to a high of 4.48 in Health Sciences.

### **Enrollment for Second Semester (Charts 24 – 30)**

In all program categories except GAS (67%), more than 70% of eligible students enrolled in the second semester of the same program. 4% or fewer students switched programs in all program categories in the second semester. 8% of GAS students switched for second semester, but this is to be expected given the exploratory nature of this program.

### **Further Insights**

Colleges are required to report to MTCU the number of students in the Academic Upgrading program who move on to further training at the conclusion of their time in college upgrading. This year we have compared the number of students **reported** to have moved on with the **actual** number who did register in postsecondary programming. In 2008-2009, colleges reported that 2,895 were identified at exit as having moved on to further training. The actual number participating in first semester programming is 3,372. The additional 477 would be students who weren't accepted at the time of their exit or were AU graduates from earlier years who had "stopped out" for various reasons.

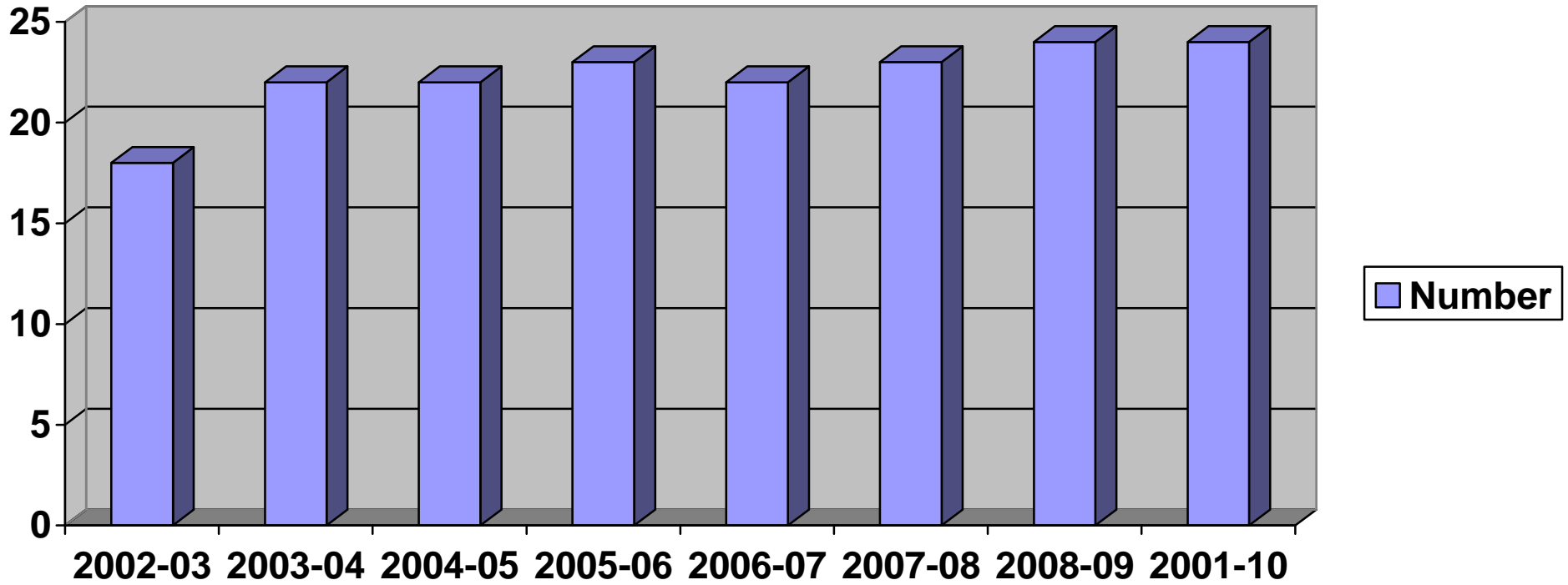
### **Conclusion**

In terms of retention and GPA, students from adult upgrading programs who move on to postsecondary programming continue to demonstrate they are well prepared both academically and personally to succeed. Furthermore, the low rate of program changes indicates adult upgrading programs have helped them make the appropriate program selections.

The College Sector Committee hopes that this study helps demonstrate to current and potential college upgrading students, college personnel, funders and the community that time spent in college upgrading programs is a **guaranteed investment in the future**.

**CHART 1**

**NUMBER OF PARTICIPATING COLLEGES**



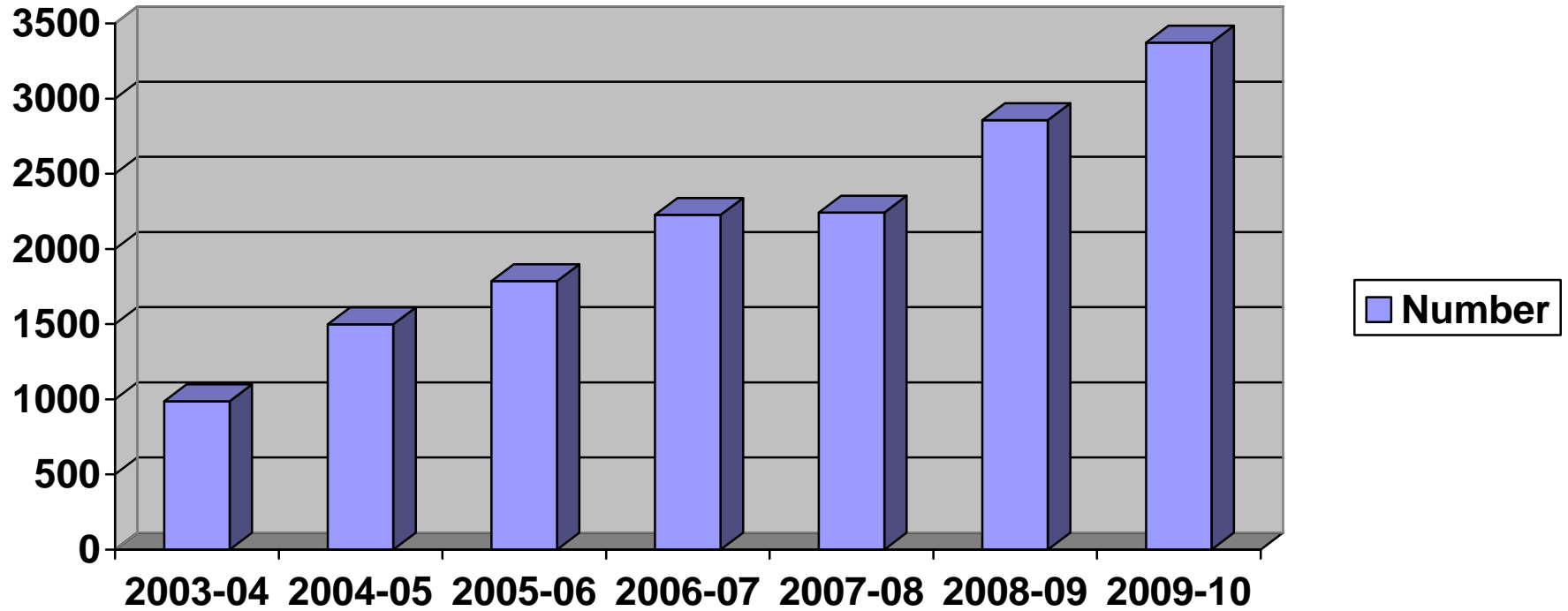
Years	2003-04	2004-05	2005-06	2006-07	2007-08	2008-09	2009-10
Number of Colleges	22	22	23	22	23	24	24

**CHART 2****PARTICIPATING COLLEGES**

<b>College</b>	<b>2003-04</b>	<b>2004-05</b>	<b>2005-06</b>	<b>2006-07</b>	<b>2007-08</b>	<b>2008-09</b>	<b>2009-10</b>
Algonquin	✓	✓	✓	✓	✓	✓	✓
Boreal		✓	✓	✓	✓	✓	✓
Cambrian	✓	✓	✓	✓	✓	✓	✓
Canadore	✓	✓	✓	✓	✓	✓	✓
Centennial	✓	✓	✓	NA	✓	✓	✓
Conestoga	✓	✓	✓	✓	✓	✓	✓
Confederation	✓		✓	✓	✓	✓	✓
Durham	✓	✓	✓	✓	✓	✓	✓
Fanshawe	✓	✓	✓	✓	✓	✓	✓
Fleming	✓	✓	✓	✓	✓	✓	✓
George Brown	✓	✓	✓	✓	✓	✓	✓
Georgian	✓	✓	✓	✓	✓	✓	✓
Humber	✓	✓	✓	✓	✓	✓	✓
La Cite	✓	✓	✓	✓	✓	✓	✓
Lambton	✓	✓	✓	✓	✓	✓	✓
Loyalist	✓	✓	✓	✓	✓	✓	✓
Mohawk	✓	✓	✓	✓	✓	✓	✓
Niagara	✓	✓	✓	✓	✓	✓	✓
Northern	✓	✓	✓	✓	✓	✓	✓
Sault	✓	✓	✓	✓	✓	✓	✓
Seneca	✓	✓	✓	✓	✓	✓	✓
Sheridan	✓	✓	✓	✓	✓	✓	✓
St. Clair	NA	NA	NA	NA	NA	✓	✓
St. Lawrence	✓	✓	✓	✓	✓	✓	✓

**CHART 3**

**NUMBER OF STUDENTS COMPARED**



Years	2003-04	2004-05	2005-06	2006-07	2007-08	2008-09	2009-10
Number of students	986	1498	1786	2227	2245	2858	3372

**CHART 4 A****NUMBER OF STUDENTS BY COLLEGE**

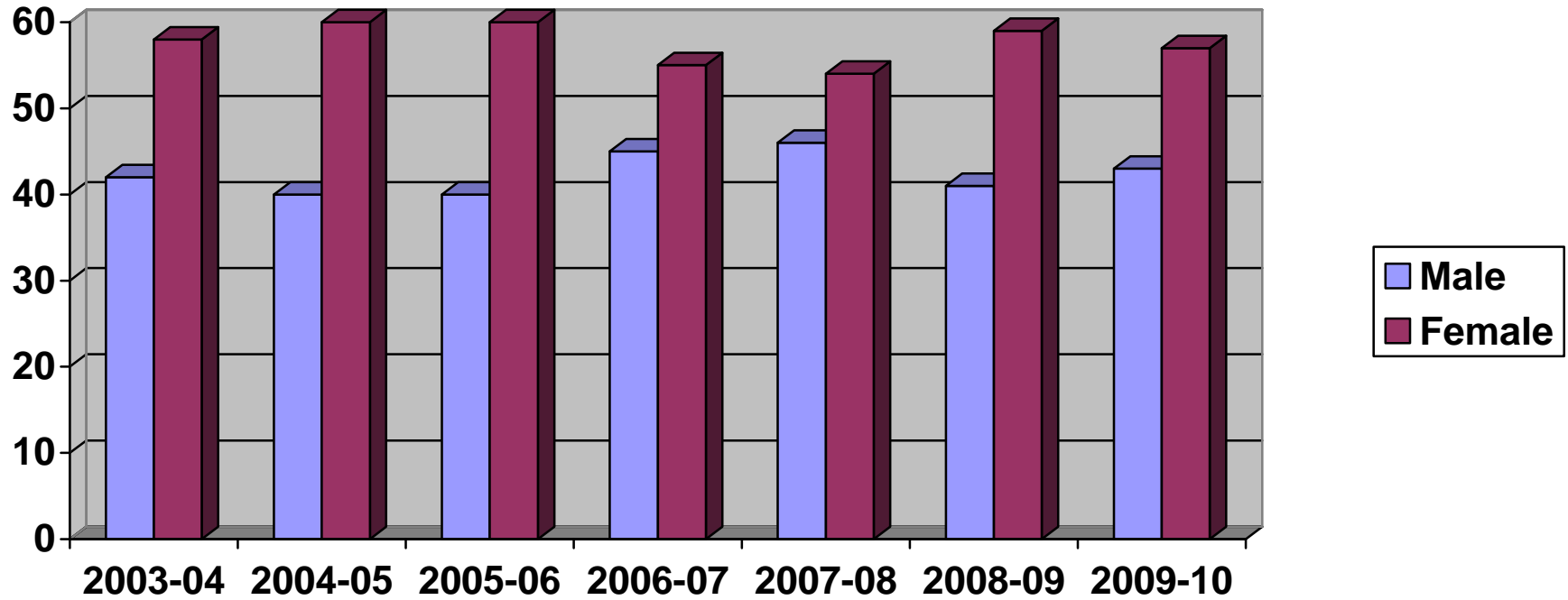
<b>College</b>	<b>2006-07</b>	<b>2007-08</b>	<b>% Change</b>	<b>2008-09</b>	<b>% Change</b>	<b>2009-10</b>	<b>% Change</b>
Algonquin	505	505	0	541	+7%	553	+2%
Boreal	86	79	- 8%	76	-4%	47	-62%
Cambrian	249	256	+3%	191	-25%	417	+119%
Canadore	18	27	+50%	31	+15%	35	+13%
Centennial	NA	19	NA	37	+95%	88	+139%
Conestoga	70	142	+102%	140	-1%	196	+40%
Confederation	249	68	-73%	75	+10%	85	+13%
Durham	61	58	-5%	37	-36%	81	+119%
Fanshawe	52	124	+139%	171	+38%	182	+6%
Fleming	168	154	-8%	166	+8%	246	+48%
George Brown	55	34	- 38%	40	+18%	51	+28%
Georgian	112	142	+27%	214	+51%	309	+44%
Humber	31	36	+16%	17	-53%	21	+24%
La Cite	37	51	+38%	49	-4%	47	-4%
Lambton	16	18	+12.5%	18	--	42	+133%
Loyalist	45	54	+20%	56	+4%	24	-57%
Mohawk	46	49	+6.5%	73	+49%	93	+27%
Niagara	31	17	-45%	41	+141%	63	+54%
Northern	36	64	+78%	397	+520%	285	-28%
Sault	29	22	-24%	59	+168%	101	+71%
Seneca	81	71	-12%	63	-11%	44	-30%
Sheridan	142	154	+8%	138	-10%	185	+34%
St. Clair	NA	NA	NA	86	--	46	-47%
St. Lawrence	108	98	-9%	142	+45%	131	-8%
<b>TOTAL</b>	<b>2227</b>	<b>2245</b>	<b>+1%</b>	<b>2858</b>	<b>+27%</b>	<b>3372</b>	<b>+18%</b>

**CHART 4 B****INDIVIDUAL COLLEGE PERCENTAGE SHARE OF THE PROVINCIAL TOTAL**

<b>College</b>	<b>2009-10</b>	<b>% of Provincial Total</b>
Algonquin	553	16
Boreal	47	1
Cambrian	417	12
Canadore	35	1
Centennial	88	3
Conestoga	196	6
Confederation	85	3
Durham	81	2
Fanshawe	182	5
Fleming	246	7
George Brown	51	2
Georgian	309	9
Humber	21	1
La Cite	47	1
Lambton	42	1
Loyalist	24	1
Mohawk	93	3
Niagara	63	2
Northern	285	8
Sault	101	3
Seneca	44	1
Sheridan	185	6
St. Clair	46	1
St. Lawrence	131	5
<b>TOTAL</b>	<b>3372</b>	<b>100%</b>

**CHART 5**

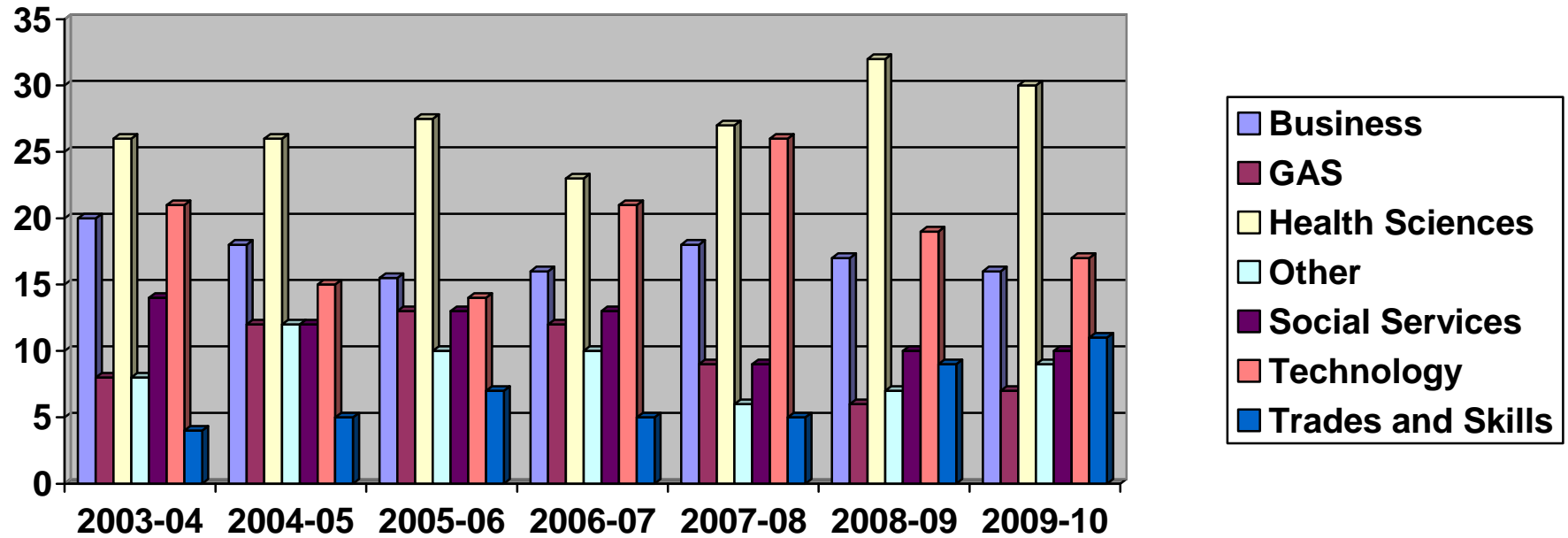
**MALE/FEMALE DISTRIBUTION**



Years	2003-04	2004-05	2005-06	2006-07	2007-08	2008-09	2009-10
Male	42%	40%	40%	45%	46%	41%	43%
Female	58%	60%	60%	55%	54%	59%	57%

**CHART 6**

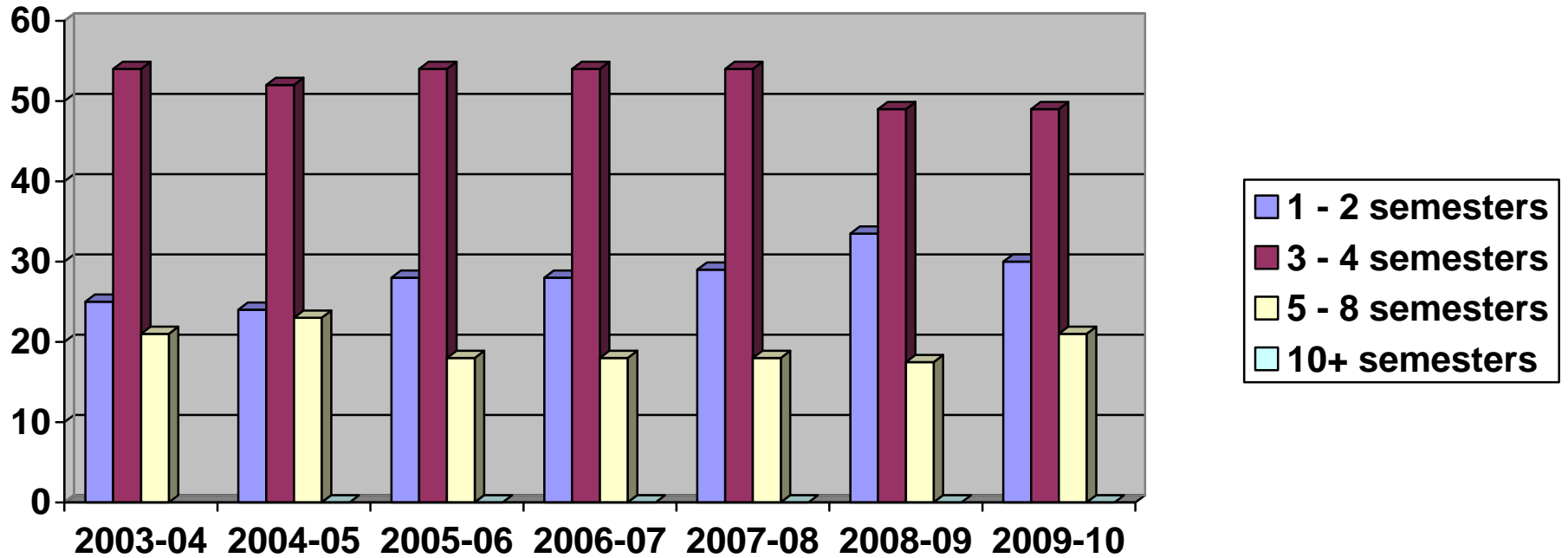
**PARTICIPATION BY PROGRAM CATEGORY**



Program Category	2003-04	2004-05	2005-06	2006-07	2007-08	2008-09	2009-10
Business	20%	18%	15.5%	16%	18%	17%	16%
General Arts & Sciences	8%	12%	13%	12%	9%	6%	7%
Health Sciences	26%	26%	27.5%	23%	27%	32%	30%
Other	8%	12%	10%	10%	6%	7%	9%
Social Services	14%	12%	13%	13%	9%	10%	10%
Technology	21%	15%	14%	21%	26%	19%	17%
Trades & Skills	4%	5%	7%	5%	5%	9%	11%

**CHART 7**

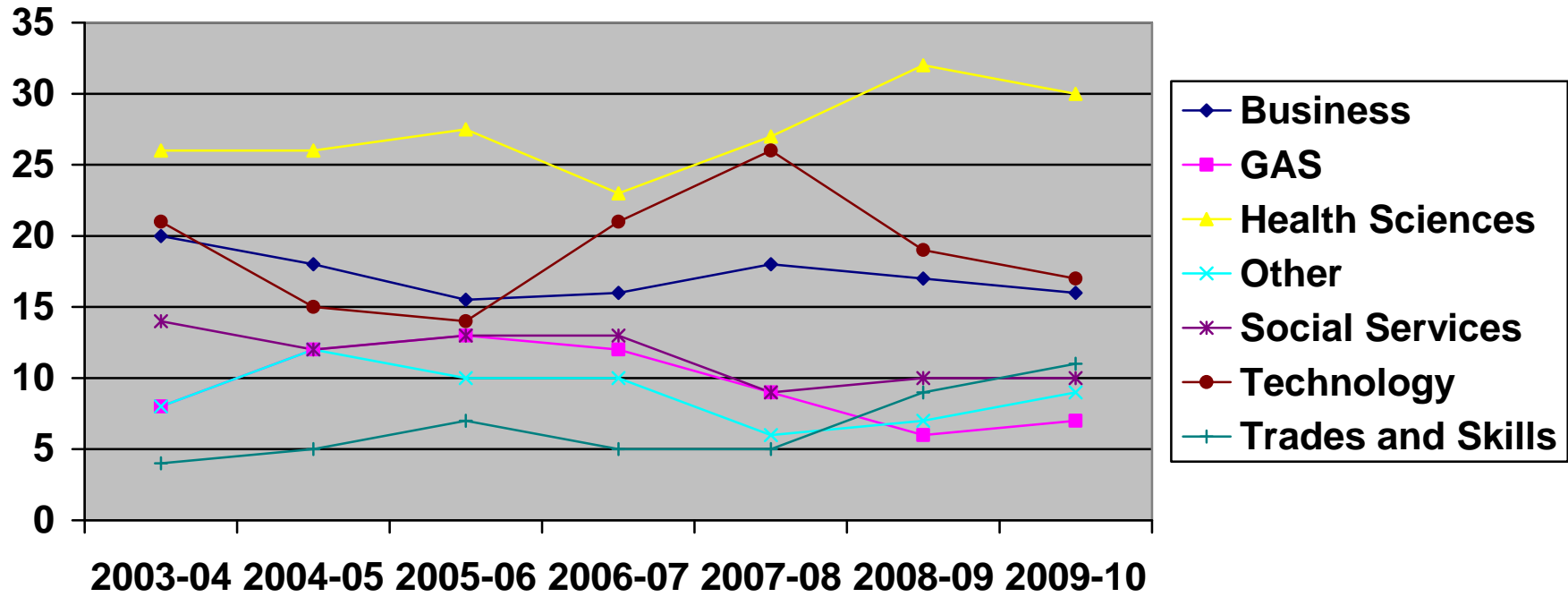
**PARTICIPATION BY PROGRAM DURATION**



	2003-04	2004-05	2005-06	2006-07	2007-08	2008-09	2009-10
1 – 2 semesters	25%	24%	28%	28%	29%	33.5%	30%
3 – 4 semesters	54%	52%	54%	54%	54%	49%	49%
5 – 8 semesters	21%	23%	18%	18%	18%	17.5%	21%
10+ semesters		0%	0%	0%	0%	0%	0%

CHART 8

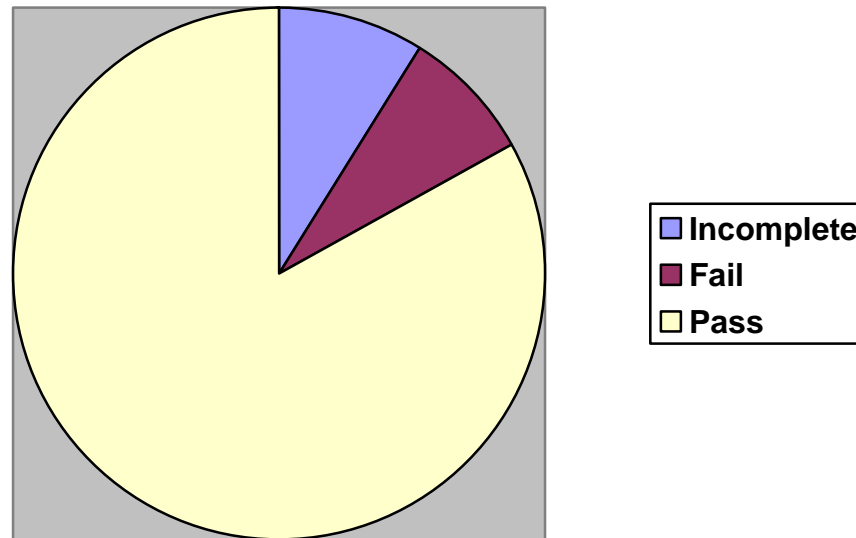
**PARTICIPATION BY PROGRAM CATEGORY**



Program Category	2003-04	2004-05	2005-06	2006-07	2007-08	2008-09	2009-10
Business	20%	18%	15.5%	16%	18%	17%	16%
General Arts & Sciences	8%	12%	13%	12%	9%	6%	7%
Health Sciences	26%	26%	27.5%	23%	27%	32%	30%
Other	8%	12%	10%	10%	6%	7%	9%
Social Services	14%	12%	13%	13%	9%	10%	10%
Technology	21%	15%	14%	21%	26%	19%	17%
Trades & Skills	4%	5%	7%	5%	5%	9%	11%

# CHART 9

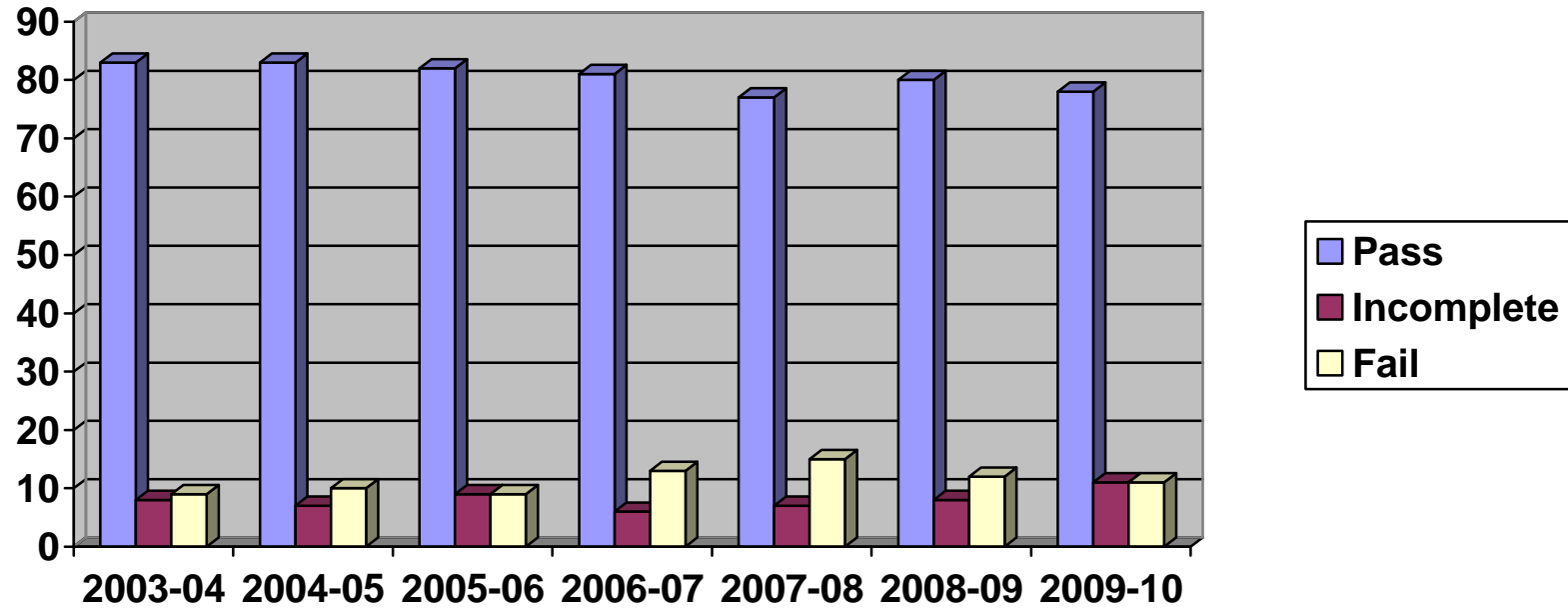
## FIRST SEMESTER RESULTS ALL PROGRAMS



Incomplete	9%
Fail	8%
Pass	83%

**CHART 10**

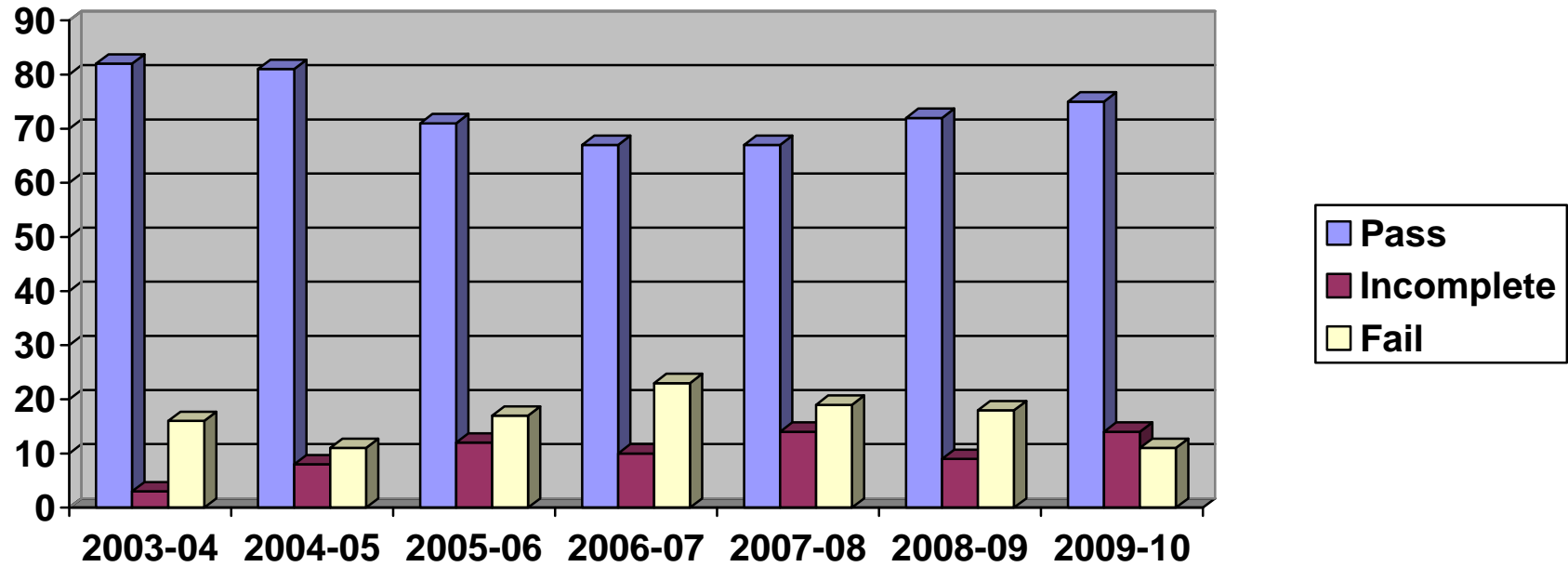
**BUSINESS  
1<sup>ST</sup> SEMESTER RESULTS**



	2003-04	2004-05	2005-06	2006-07	2007-08	2008-09	2009-10
Pass	83%	83%	82%	81%	77%	80%	78%
Incomplete	8%	7%	9%	6%	7%	8%	11%
Fail	9%	10%	9%	13%	15%	12%	11%

CHART 11

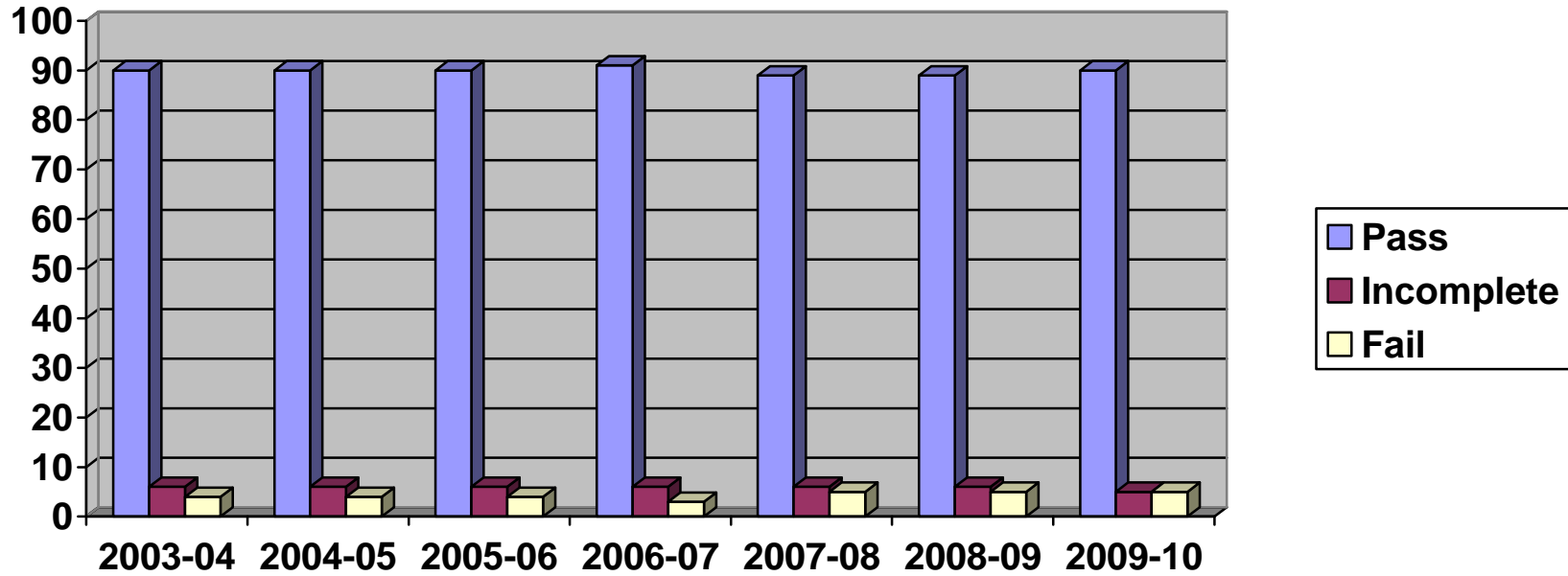
**GENERAL ARTS & SCIENCES  
1<sup>ST</sup> SEMESTER RESULTS**



	2003-04	2004-05	2005-06	2006-07	2007-08	2008-09	2009-10
Pass	82%	81%	71%	67%	67%	72%	75%
Incomplete	3%	8%	12%	10%	14%	9%	14%
Fail	16%	11%	17%	23%	19%	18%	11%

CHART 12

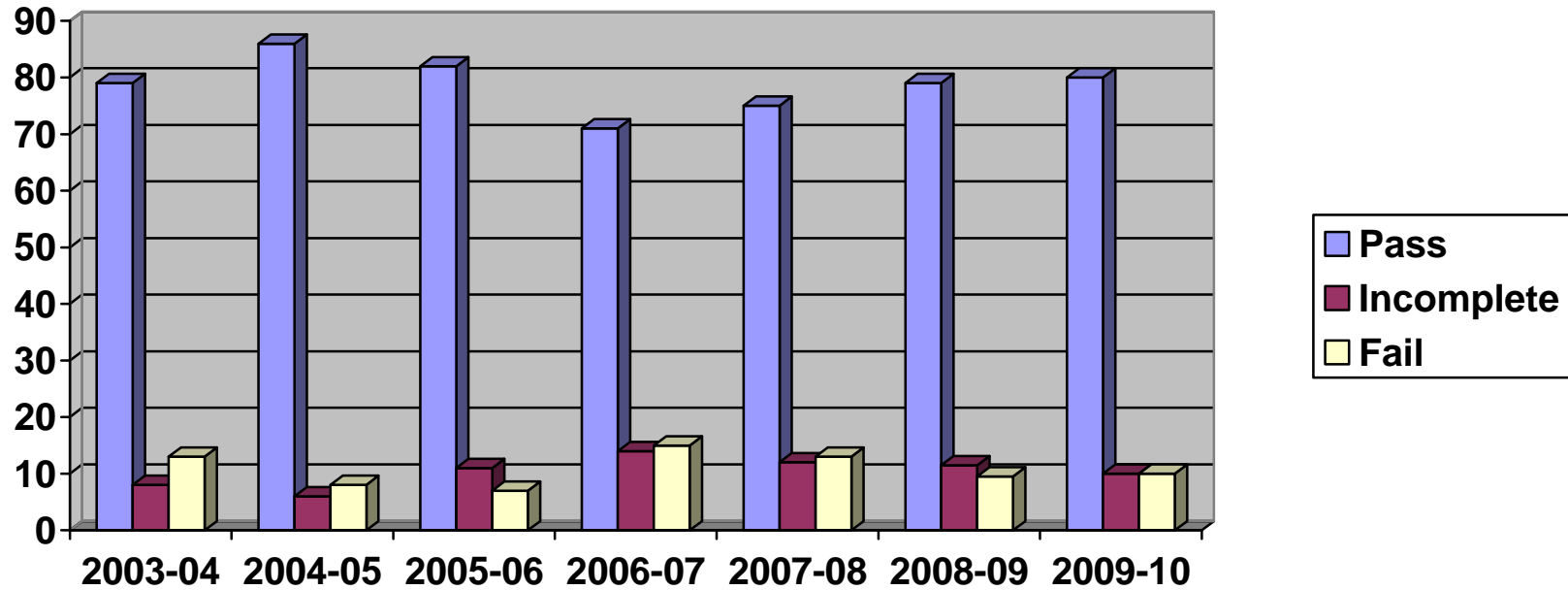
## HEALTH SCIENCES 1<sup>ST</sup> SEMESTER RESULTS



	2003-04	2004-05	2005-06	2006-07	2007-08	2008-09	2009-10
Pass	90%	90%	90%	91%	89%	89%	90%
Incomplete	6%	6%	6%	6%	6%	6%	5%
Fail	4%	4%	4%	3%	5%	5%	5%

**CHART 13**

**OTHER  
1<sup>ST</sup> SEMESTER RESULTS**

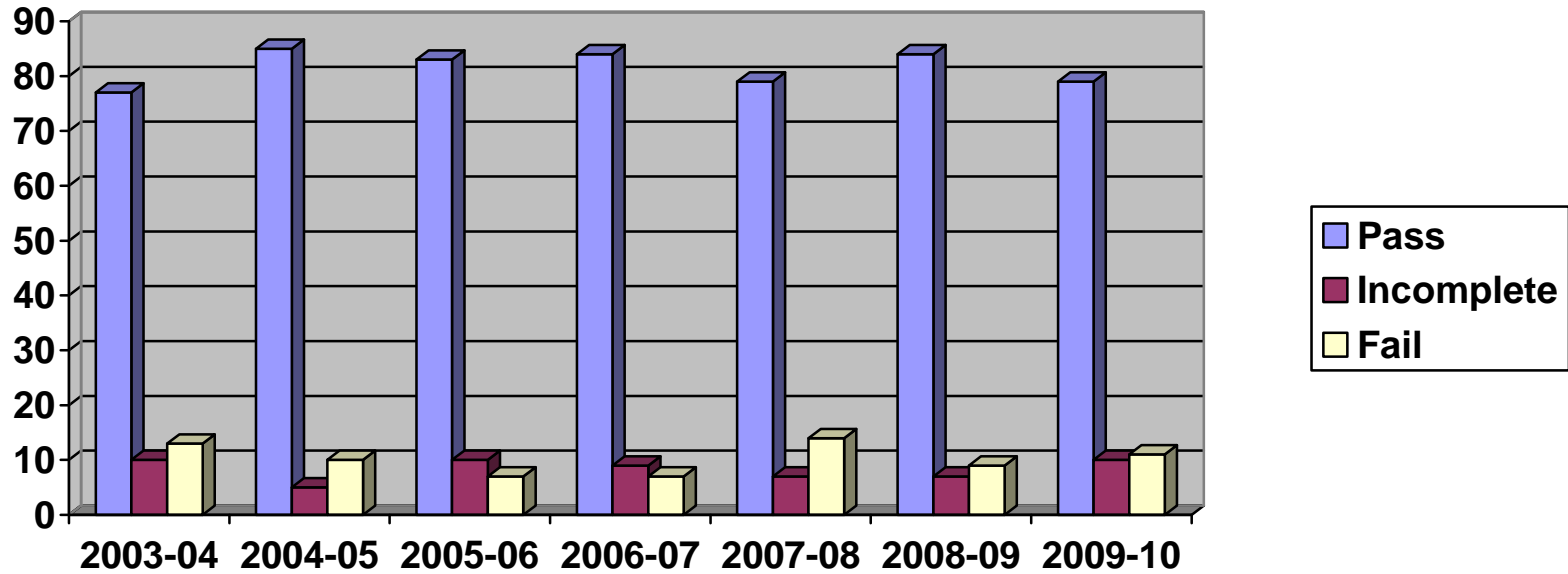


	2003-04	2004-05	2005-06	2006-07	2007-08	2008-09	2009-10
Pass	79%	86%	82%	71%	75%	79%	80%
Incomplete	8%	6%	11%	14%	12%	11.5%	10%
Fail	13%	8%	7%	15%	13%	9.5%	10%

OTHER includes courses related to Culinary Studies, Fashion, Hospitality and Tourism, Media, Sports and Leisure Management

**CHART 14**

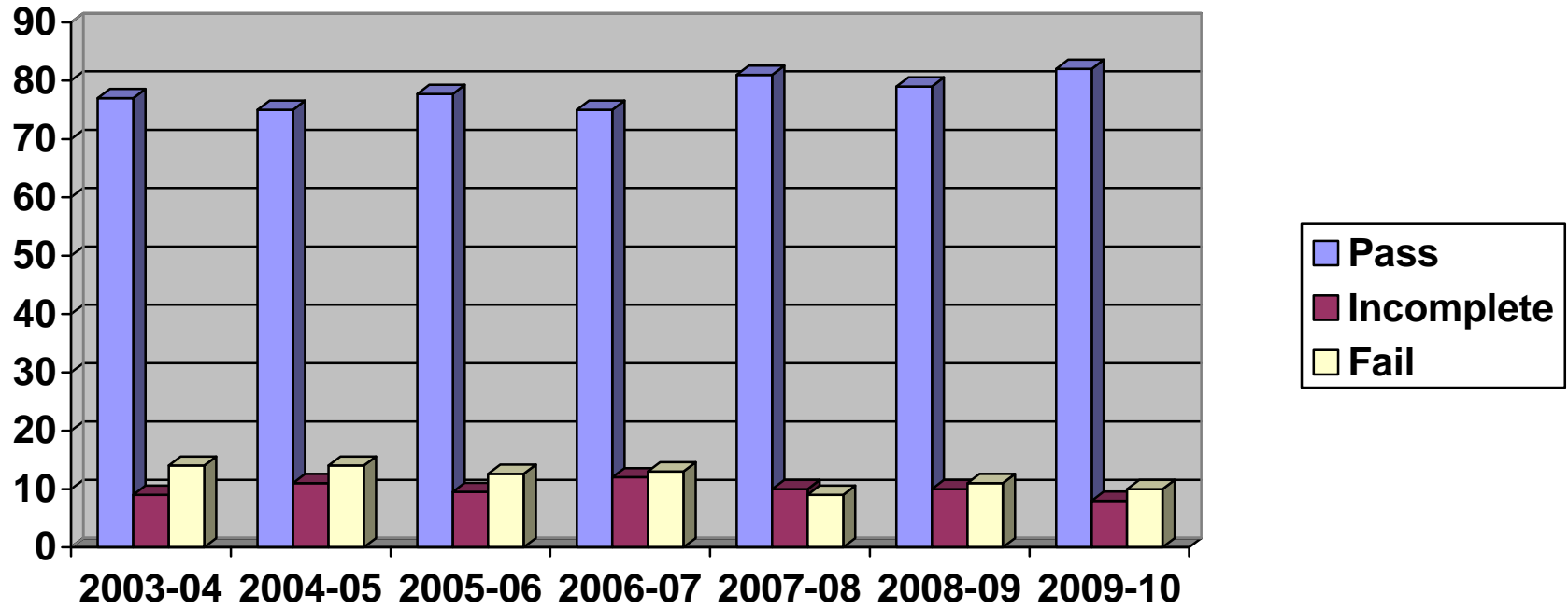
**SOCIAL SERVICES  
1<sup>ST</sup> SEMESTER RESULTS**



	2003-04	2004-05	2005-06	2006-07	2007-08	2008-09	2009-10
Pass	77%	85%	83%	84%	79%	84%	79%
Incomplete	10%	5%	10%	9%	7%	7%	10%
Fail	13%	10%	7%	7%	14%	9%	11%

CHART 15

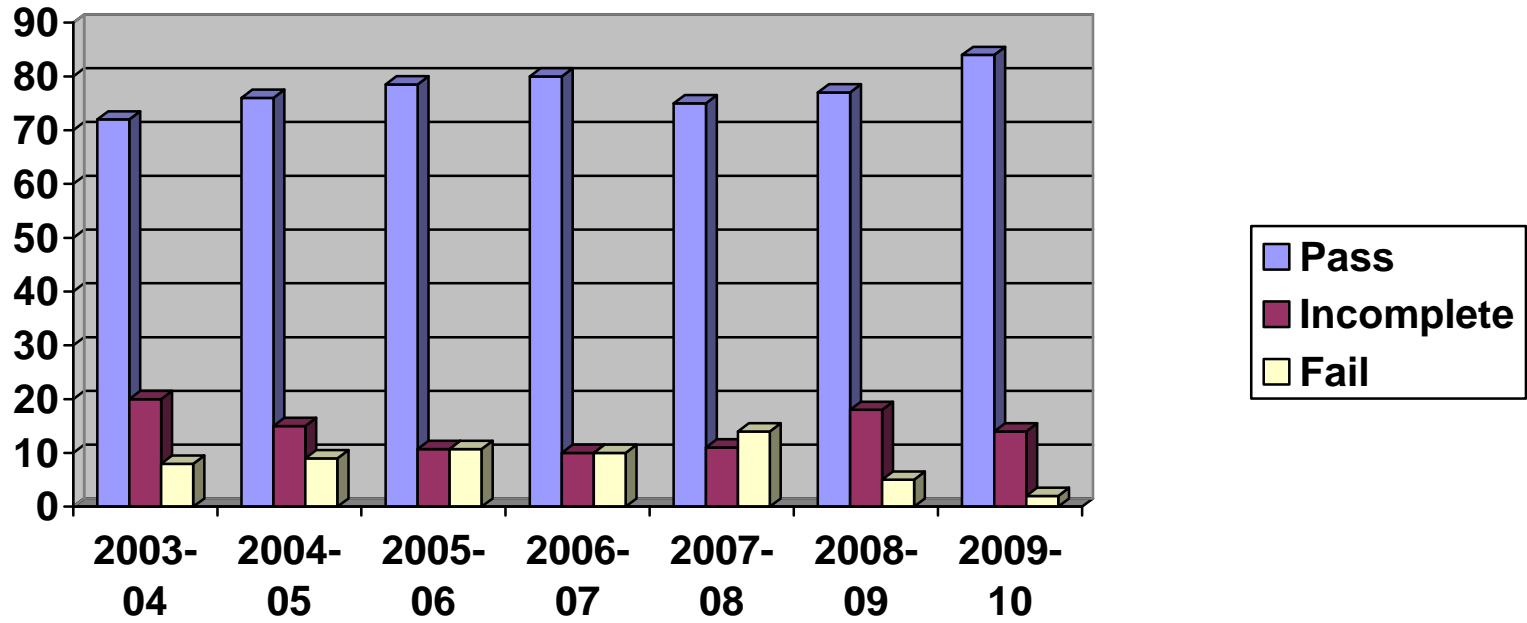
## TECHNOLOGY 1<sup>ST</sup> SEMESTER RESULTS



	2003-04	2004-05	2005-06	2006-07	2007-08	2008-09	2009-10
Pass	77%	75%	77.7%	75%	81%	79%	82%
Incomplete	9%	11%	9.5%	12%	10%	10%	8%
Fail	14%	14%	12.6%	13%	9%	11%	10%

**CHART 16**

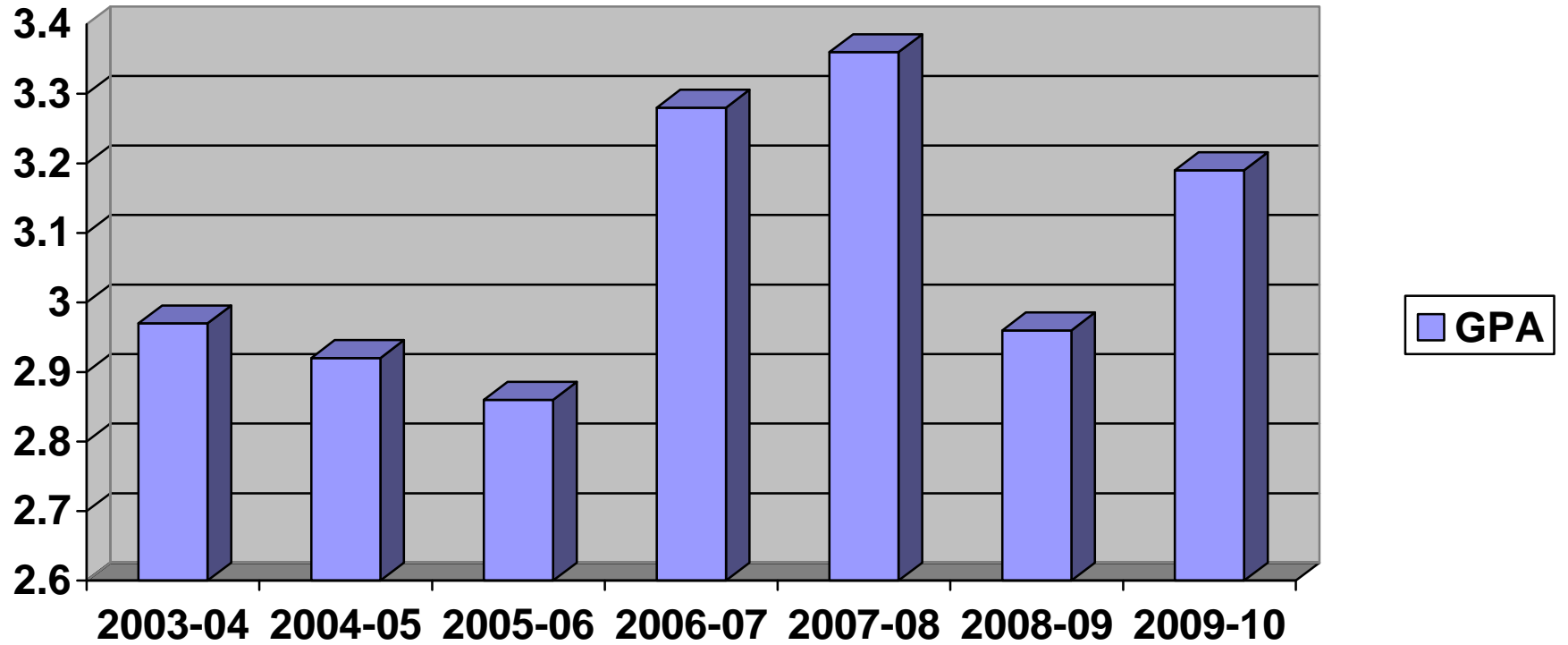
**TRADES & SKILLS  
1<sup>ST</sup> SEMESTER RESULTS**



	2003-04	2004-05	2005-06	2006-07	2007-08	2008-09	2009-10
Pass	72%	76%	78.5%	80%	75%	77%	84%
Incomplete	20%	15%	10.7%	10%	11%	18%	14%
Fail	8%	9%	10.7%	10%	14%	5%	2%

**CHART 17**

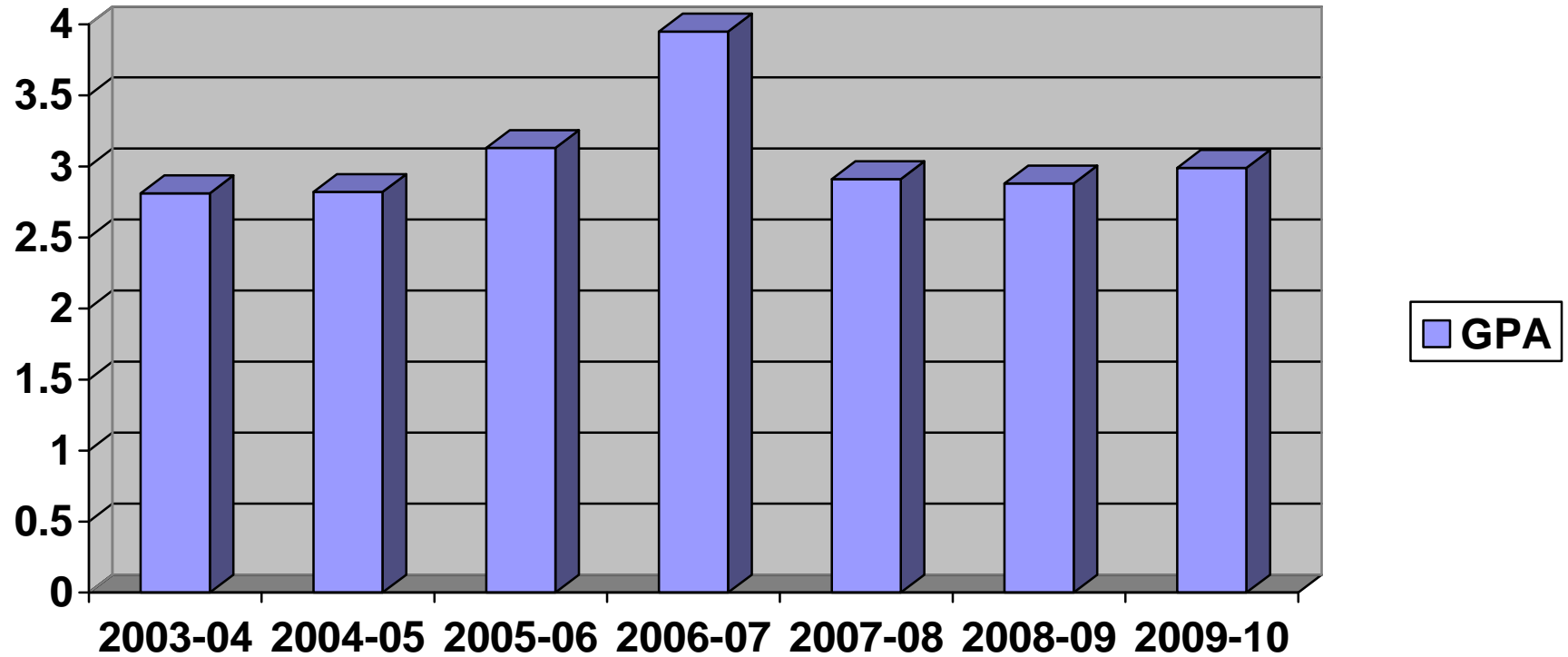
**BUSINESS  
GPA END OF FIRST SEMESTER**



	2003-04	2004-05	2005-06	2006-07	2007-08	2008-09	2009-10
GPA	2.97	2.92	2.86	3.28	3.36	2.96	3.19

**CHART 18**

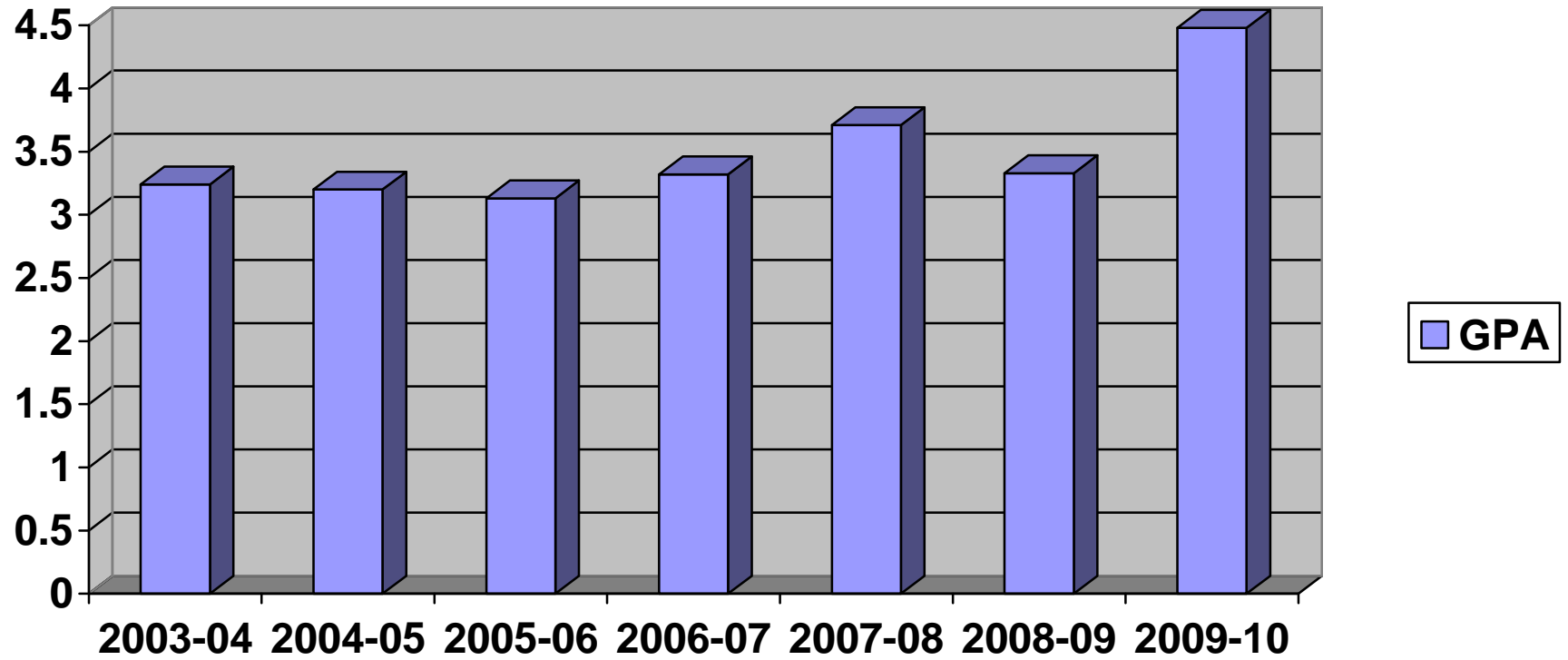
**GENERAL ARTS & SCIENCES  
GPA END OF FIRST SEMESTER**



	2003-04	2004-05	2005-06	2006-07	2007-08	2008-09	2009-10
GPA	2.81	2.82	3.13	3.42	2.91	2.88	2.99

CHART 19

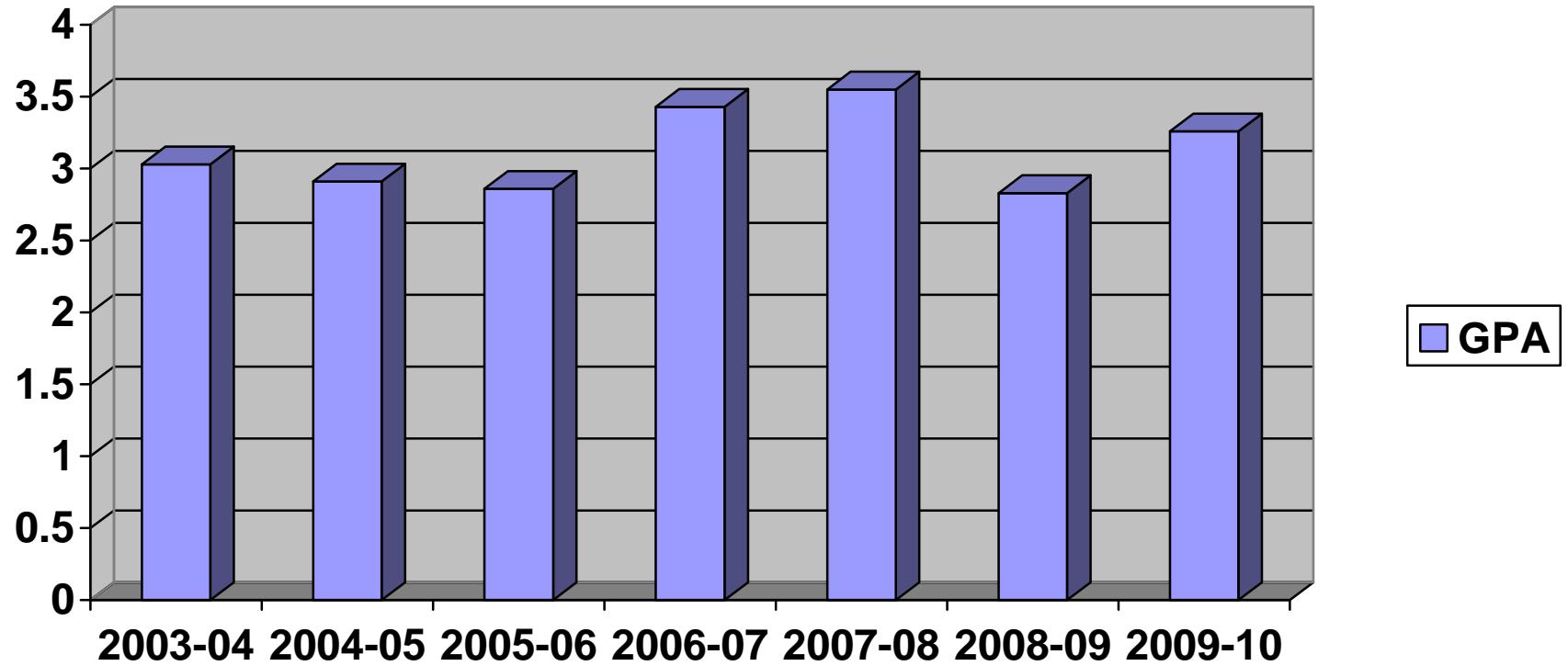
### HEALTH SCIENCES GPA END OF FIRST SEMESTER



	2003-04	2004-05	2005-06	2006-07	2007-08	2008-09	2009-10
GPA	3.24	3.20	3.13	3.32	3.71	3.33	4.48

**CHART 20**

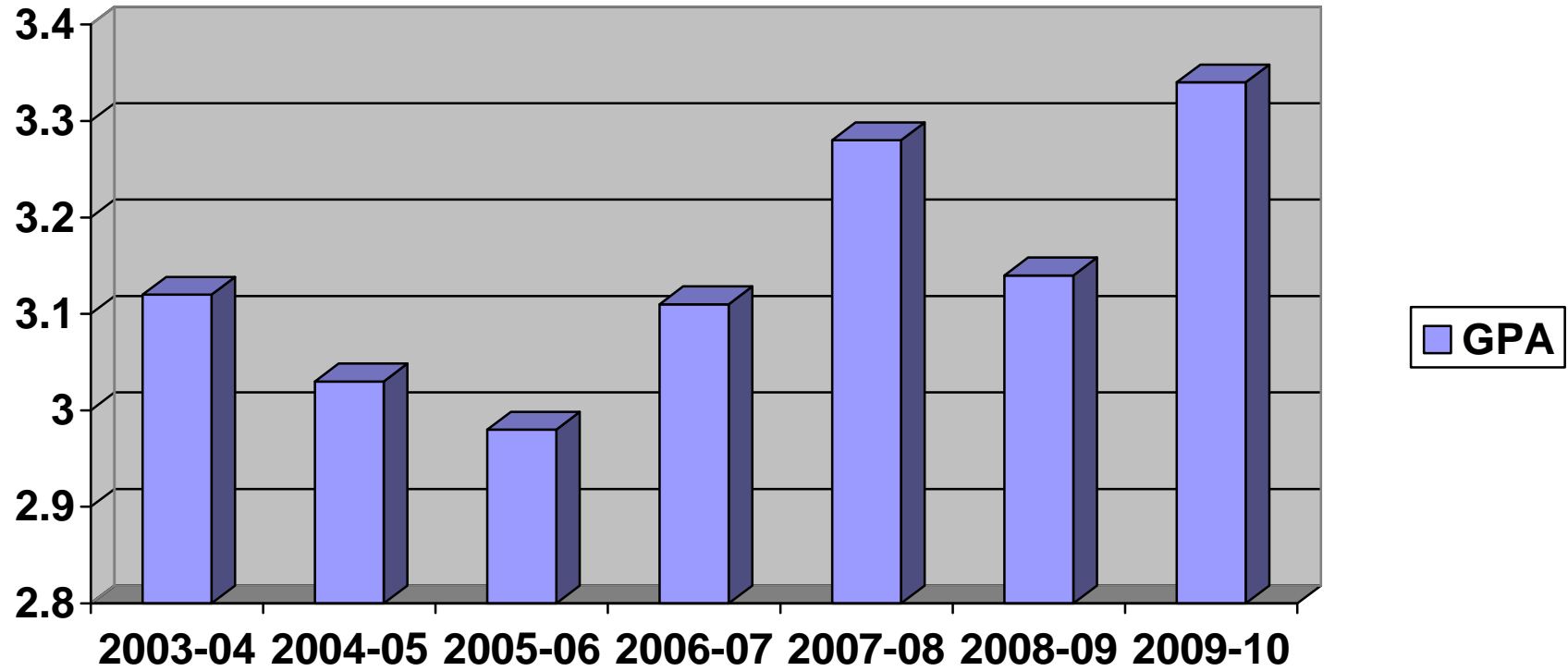
**OTHER  
GPA END OF FIRST SEMESTER**



	2003-04	2004-05	2005-06	2006-07	2007-08	2008-09	2009-10
GPA	3.03	2.91	2.86	3.43	3.55	2.83	3.26

**CHART 21**

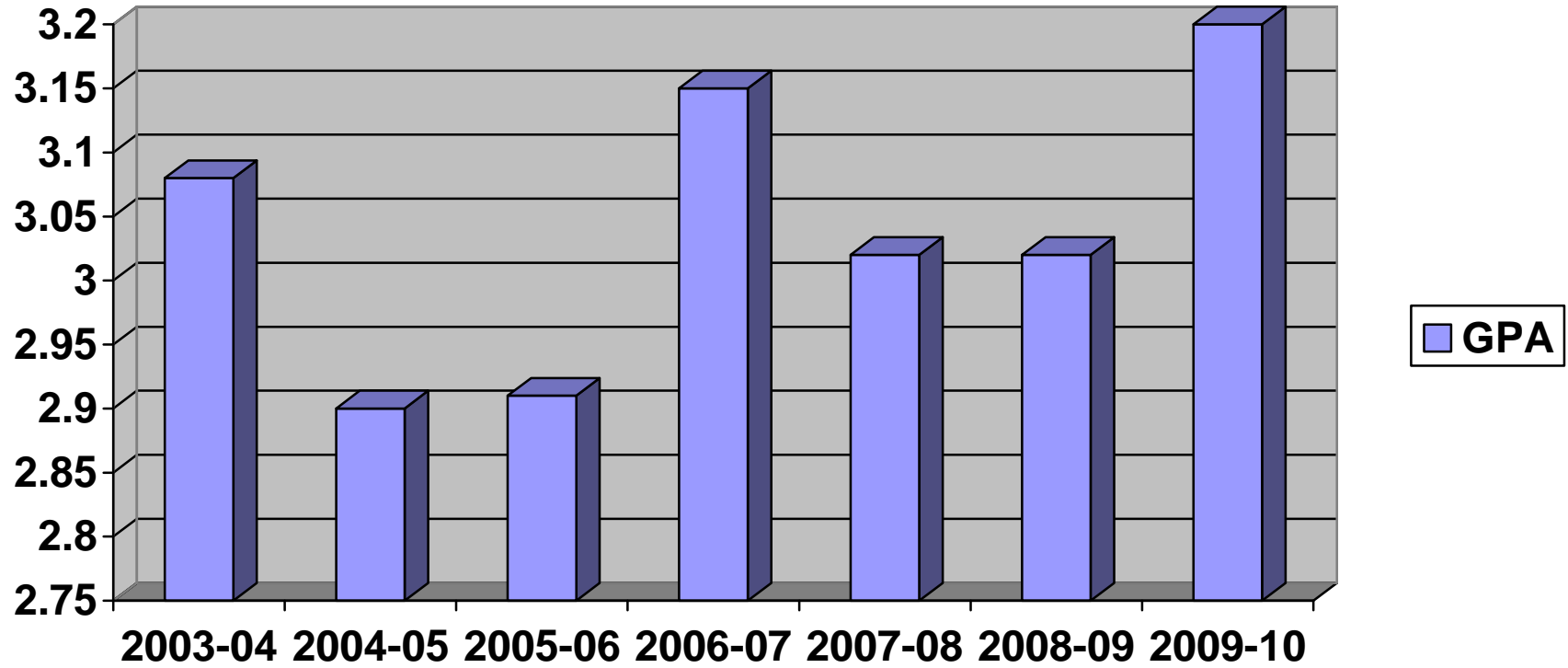
**SOCIAL SERVICES  
GPA END OF FIRST SEMESTER**



	2003-04	2004-05	2005-06	2006-07	2007-08	2008-09	2009-10
GPA	3.12	3.03	2.98	3.11	3.28	3.14	3.34

**CHART 22**

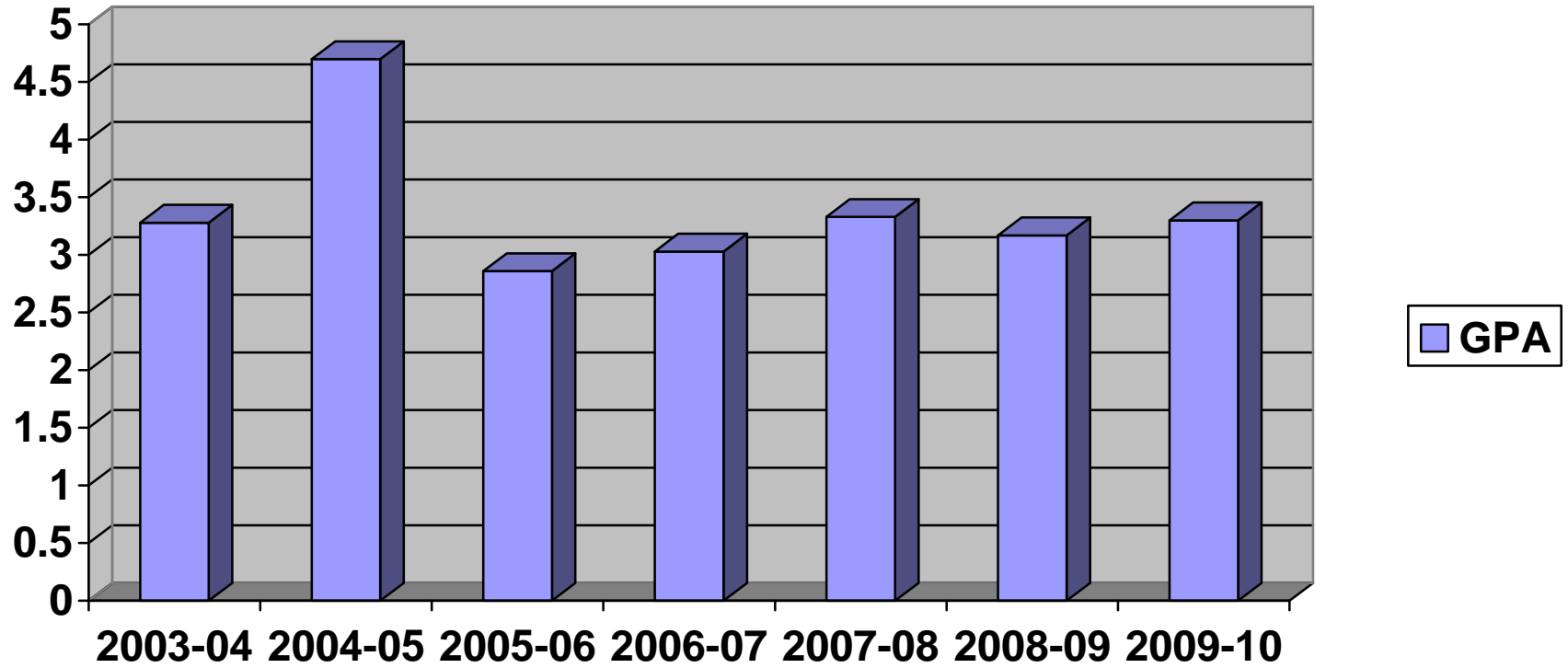
**TECHNOLOGY  
GPA END OF FIRST SEMESTER**



	2003-04	2004-05	2005-06	2006-07	2007-08	2008-09	2009-10
GPA	3.08	2.90	2.91	3.17	3.02	3.02	3.20

**CHART 23**

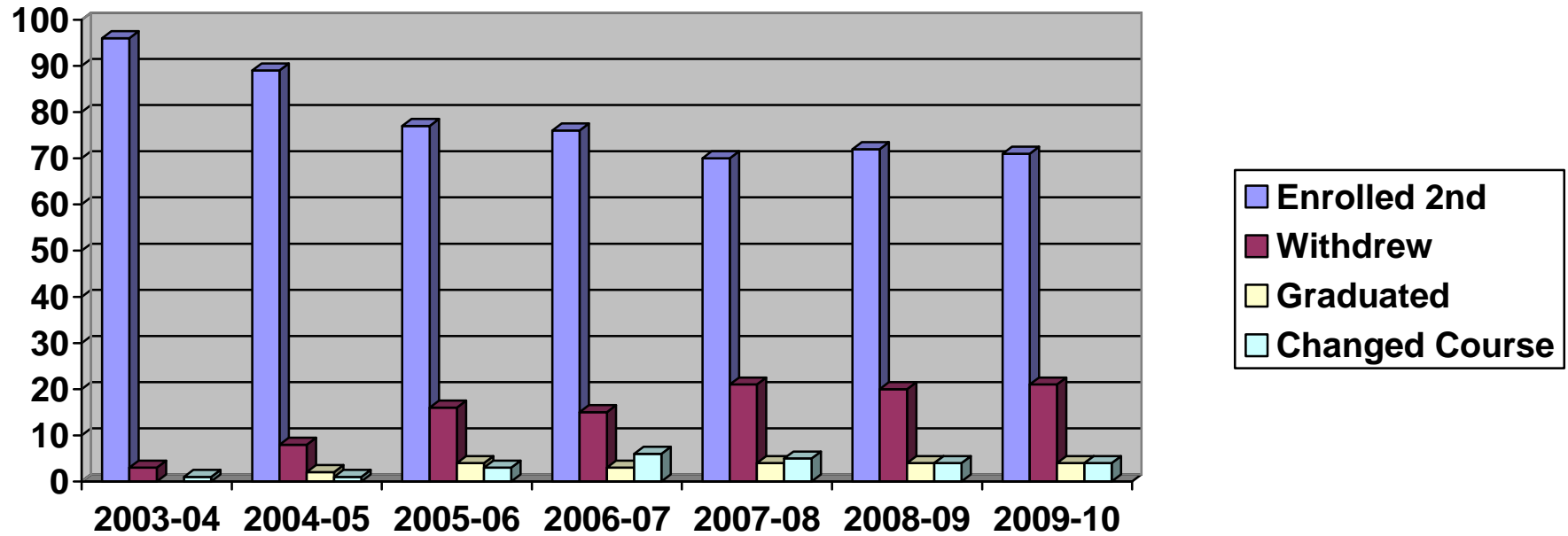
**TRADES & SKILLS  
GPA END OF FIRST SEMESTER**



	2003-04	2004-05	2005-06	2006-07	2007-08	2008-09	2009-10
GPA	3.28	4.70	2.86	3.03	3.33	3.17	3.30

**CHART 24**

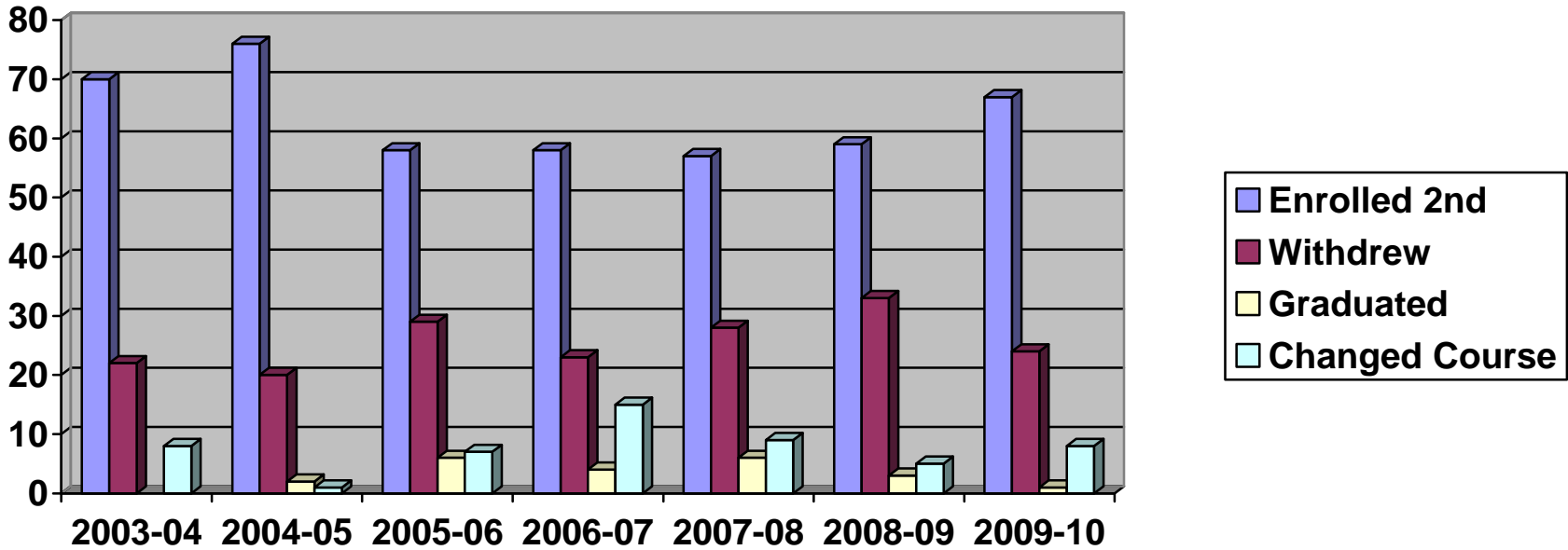
**BUSINESS  
ENROLMENT STATUS AT BEGINNING OF SECOND SEMESTER**



2 <sup>nd</sup> Semester Status	2003-04	2004-05	2005-06	2006-07	2007-08	2008-09	2009-10
Enrolled 2 <sup>nd</sup> Semester	96%	89%	77%	76%	70%	72%	71%
Withdrew	3%	8%	16%	15%	21%	20%	21%
Graduated	N/A	2%	4%	3%	4%	4%	4%
Changed Course	1%	1%	3%	6%	5%	4%	4%

**CHART 25**

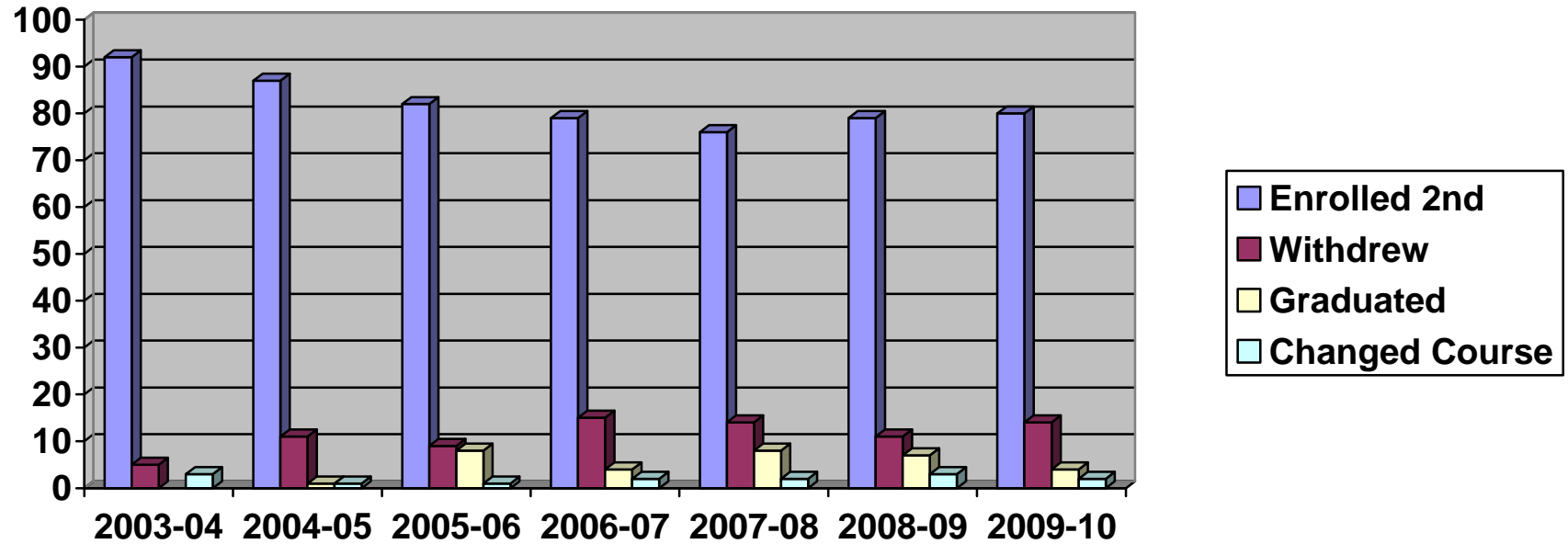
**GENERAL ARTS & SCIENCES  
ENROLMENT STATUS AT BEGINNING OF SECOND SEMESTER**



2NS Semester Status	2003-04	2004-05	2005-06	2006-07	2007-08	2008-09	2009-10
Enrolled 2 <sup>nd</sup> Semester	70%	76%	58%	58%	57%	59%	67%
Withdrew	22%	20%	29%	23%	28%	33%	24%
Graduated	N/A	2%	6%	4%	6%	3%	1%
Changed Course	8%	1%	7%	15%	9%	5%	8%

CHART 26

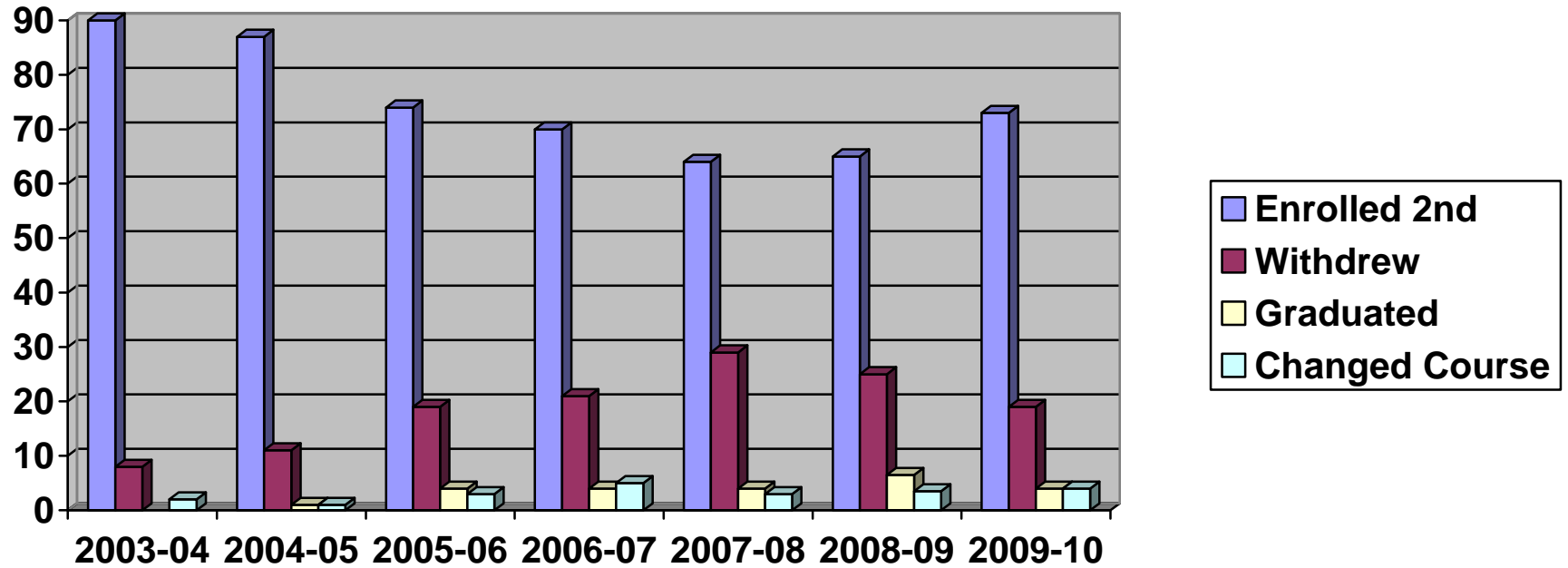
**HEALTH SCIENCES  
ENROLMENT STATUS AT BEGINNING OF SECOND SEMESTER**



2 <sup>nd</sup> Semester Status	2003-04	2004-05	2005-06	2006-07	2007-08	2008-09	2009-10
Enrolled 2 <sup>nd</sup> Semester	92%	87%	82%	79%	76%	79%	80%
Withdrew	5%	11%	9%	15%	14%	11%	14%
Graduated	N/A	1%	8%	4%	8%	7%	4%
Changed Course	3%	1%	1%	2%	2%	3%	2%

CHART 27

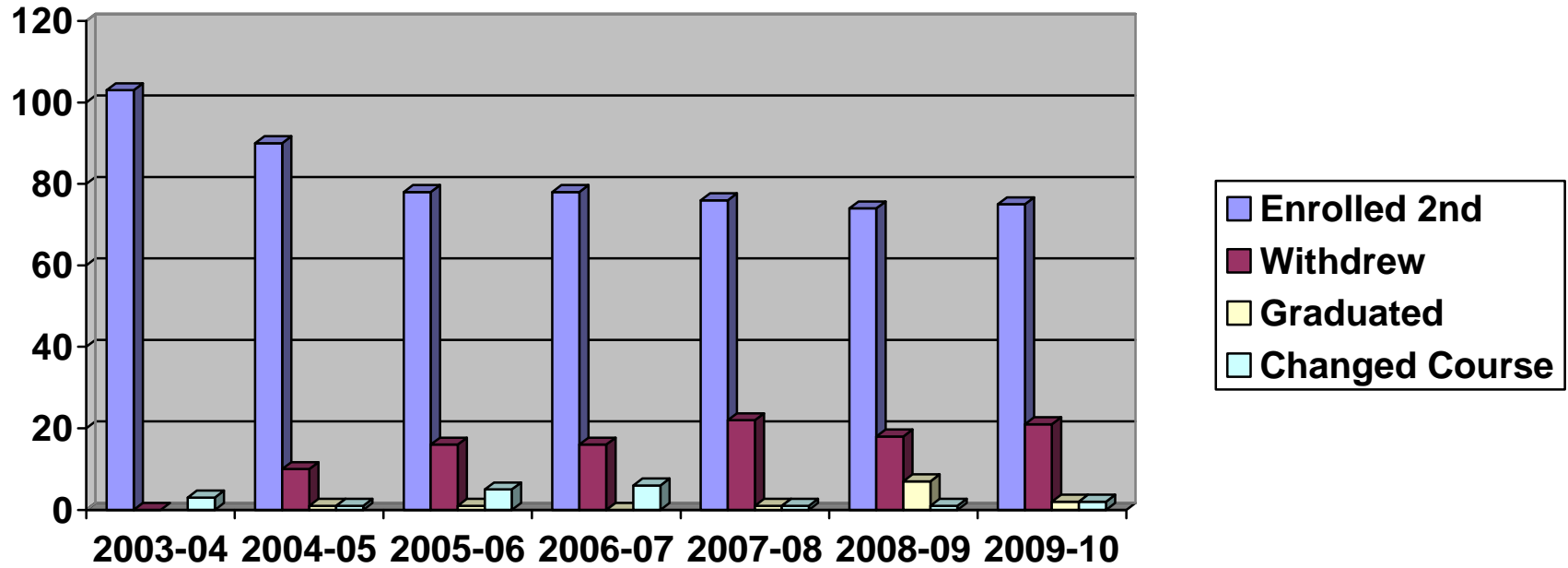
**OTHER**  
**ENROLMENT STATUS AT BEGINNING OF SECOND SEMESTER**



2 <sup>nd</sup> Semester Status	2003-04	2004-05	2005-06	2006-07	2007-08	2008-09	2009-10
Enrolled 2 <sup>nd</sup> Semester	90%	87%	74%	70%	64%	65%	73%
Withdrew	8%	11%	19%	21%	29%	25%	19%
Graduated	N/A	1%	4%	4%	4%	6.5%	4%
Changed Course	2%	1%	3%	5%	3%	3.5%	4%

CHART 28

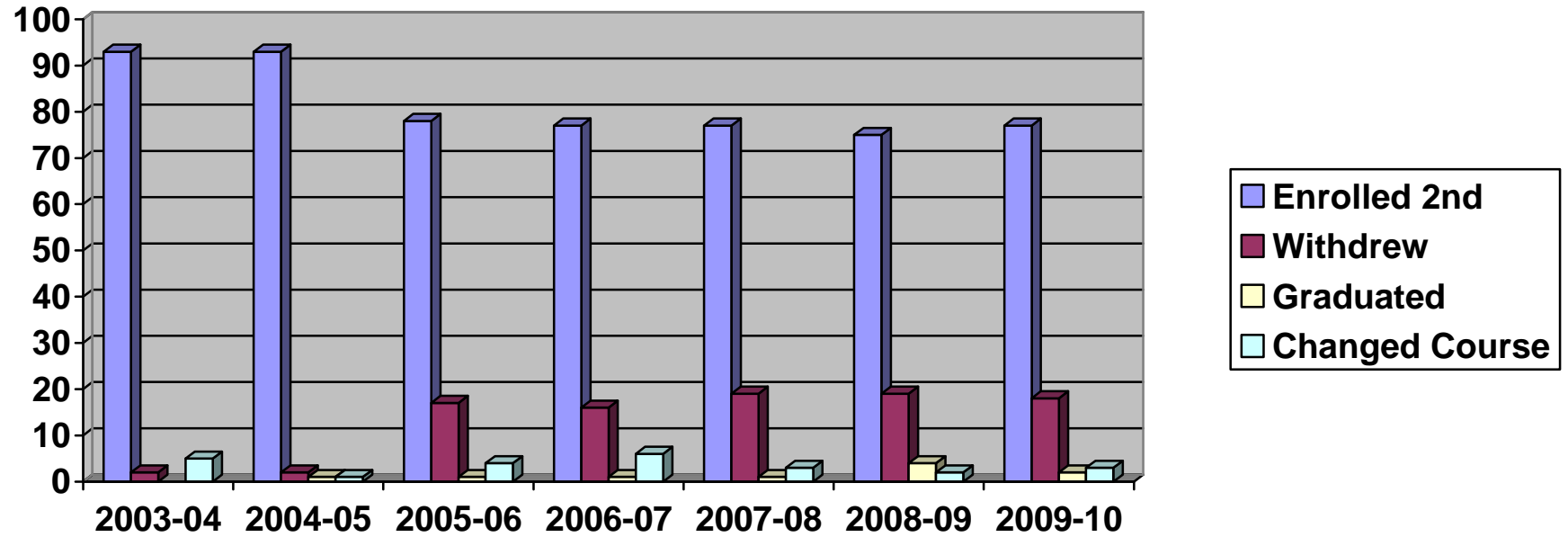
**SOCIAL SERVICES  
ENROLMENT STATUS AT BEGINNING OF SECOND SEMESTER**



2 <sup>nd</sup> Semester Status	2003-04	2004-05	2005-06	2006-07	2007-08	2008-09	2009-10
Enrolled 2 <sup>nd</sup> Semester	103%	90%	78%	78%	76%	74%	75%
Withdrew	0%	10%	16%	16%	22%	18%	21%
Graduated	N/A	1%	1%	0%	1%	7%	2%
Changed Course	3%	1%	5%	6%	1%	1%	2%

CHART 29

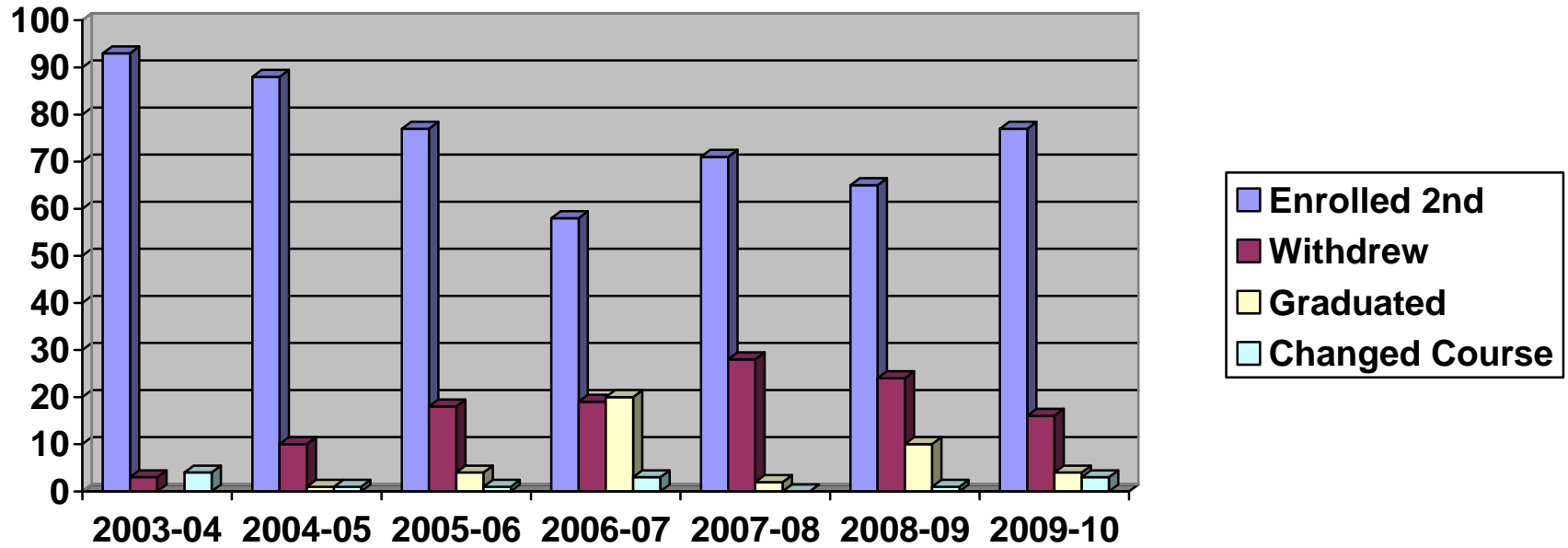
**TECHNOLOGY  
ENROLMENT STATUS AT BEGINNING OF SECOND SEMESTER**



2 <sup>nd</sup> Semester Status	2003-04	2004-05	2005-06	2006-07	2007-08	2008-09	2009-10
Enrolled 2 <sup>nd</sup> Semester	93%	93%	78%	77%	77%	75%	77%
Withdrew	2%	2%	17%	16%	19%	19%	18%
Graduated	N/A	1%	1%	1%	1%	4%	2%
Changed Course	5%	1%	4%	6%	3%	2%	3%

CHART 30

**TRADES & SKILLS  
ENROLMENT STATUS AT BEGINNING OF SECOND SEMESTER**



2 <sup>nd</sup> Semester Status	2003-04	2004-05	2005-06	2006-07	2007-08	2008-09	2009-10
Enrolled 2 <sup>nd</sup> Semester	93%	88%	77%	58%	71%	65%	77%
Withdrew	3%	10%	18%	19%	28%	24%	16%
Graduated	N/A	1%	4%	20%	2%	10%	4%
Changed Course	4%	1%	1%	3%	0%	1%	3%