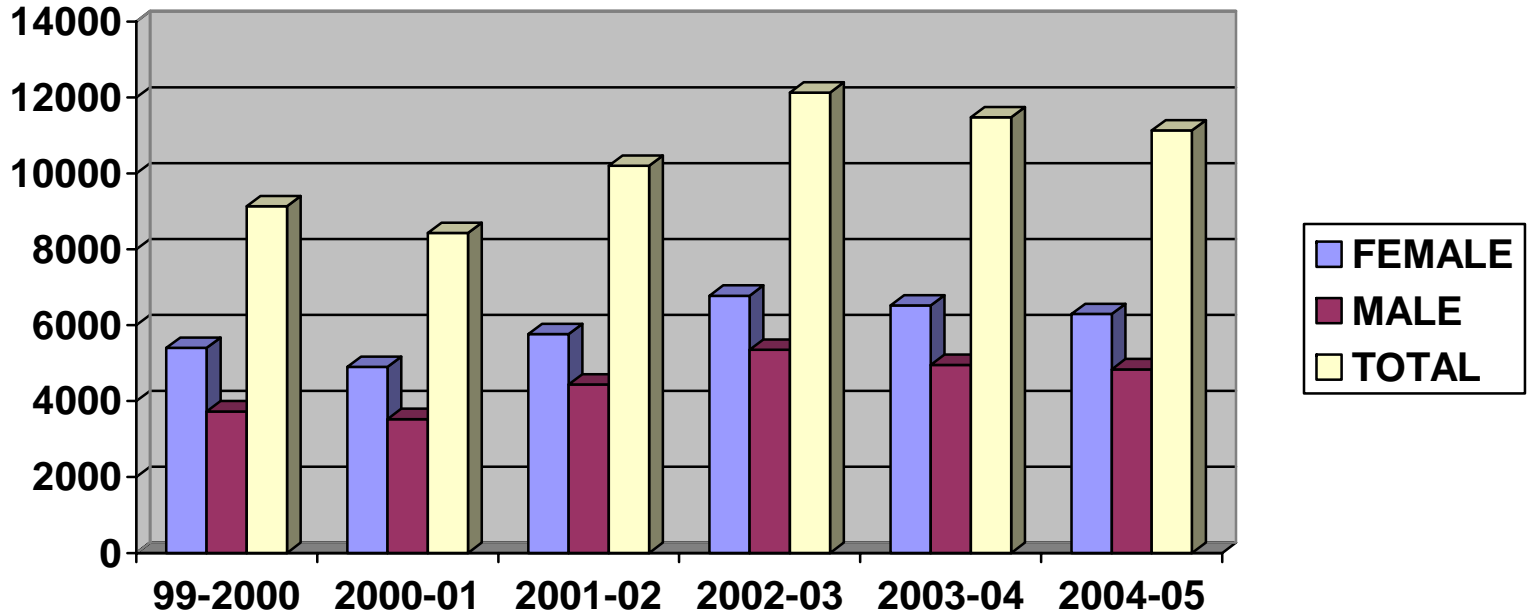


Chart 1

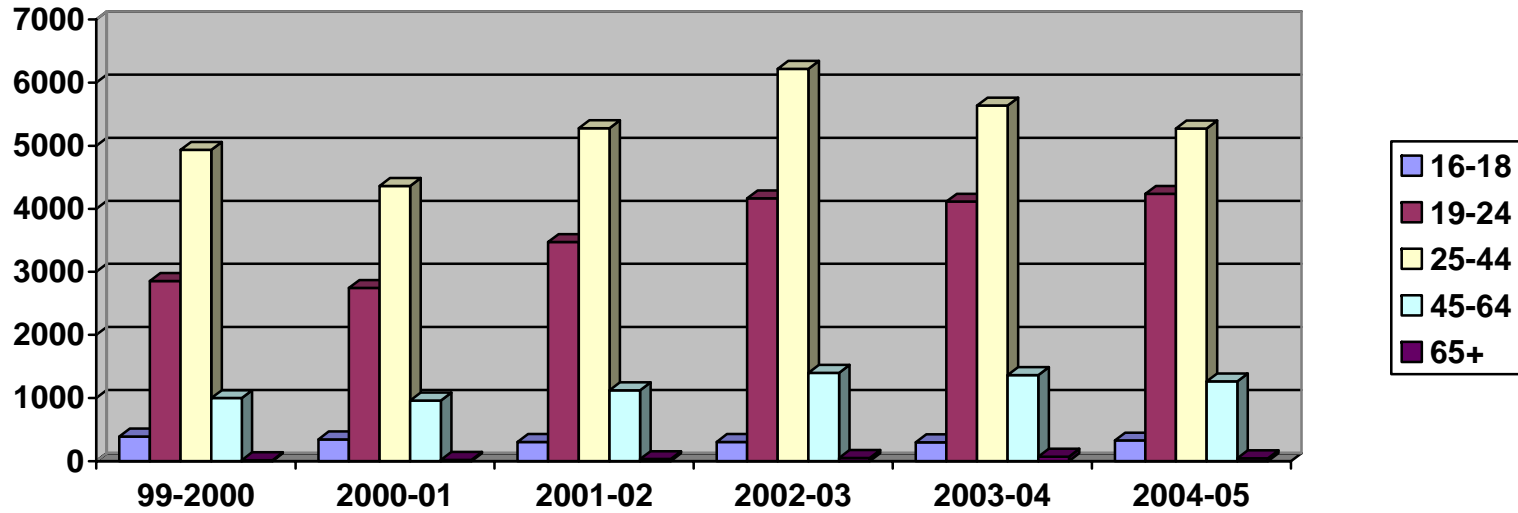
**LBS 1 – 5 INTAKE INFORMATION**  
**NUMBER OF STUDENTS**



	<b>FEMALE</b>	<b>MALE</b>	<b>TOTAL</b>
<b>1999-2000</b>	<b>5404</b>	<b>3729</b>	<b>9133</b>
<b>2000-2001</b>	<b>4901</b>	<b>3527</b>	<b>8428</b>
<b>2001-2002</b>	<b>5764</b>	<b>4436</b>	<b>10200</b>
<b>2002-2003</b>	<b>6778</b>	<b>5353</b>	<b>12131</b>
<b>2003-2004</b>	<b>6522</b>	<b>4955</b>	<b>11477</b>
<b>2004-2005</b>	<b>6296</b>	<b>4839</b>	<b>11135</b>

Chart 2

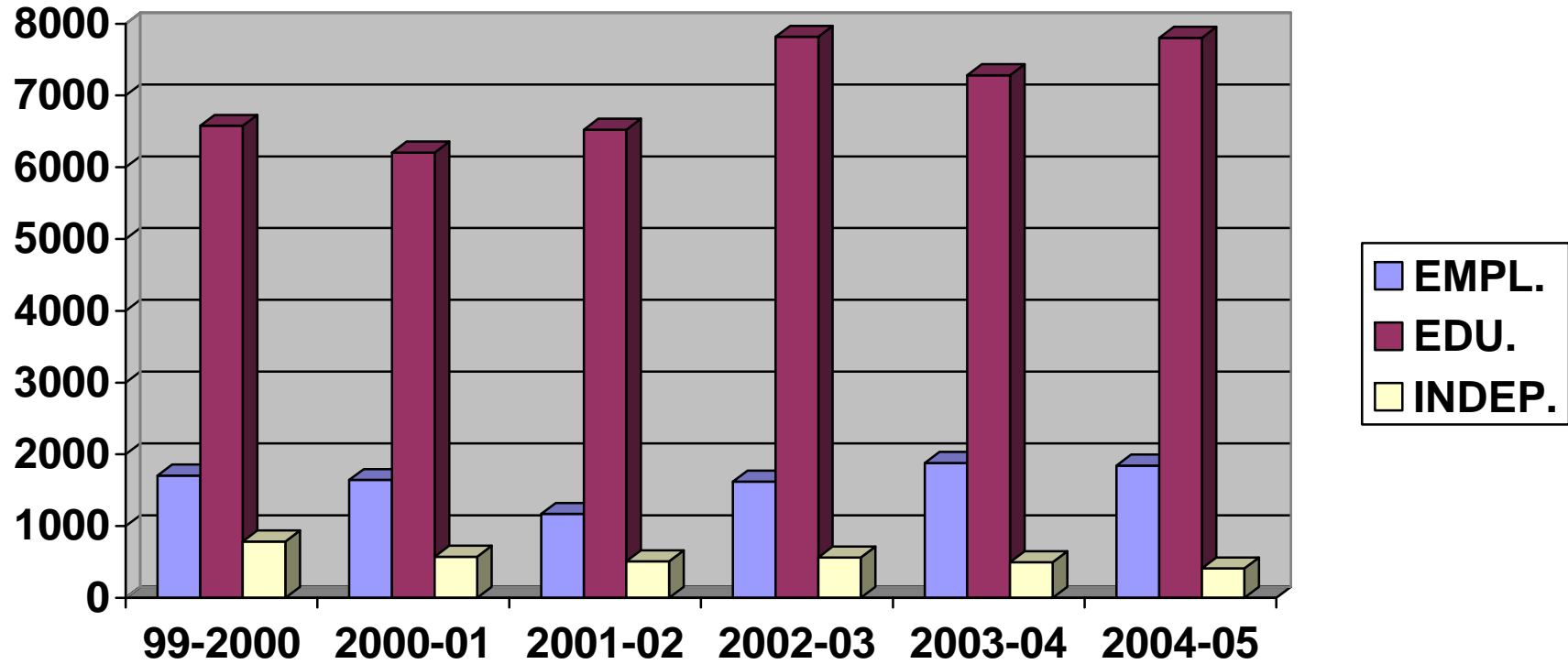
## LBS 1 - 5 AGE RANGES



	16-18	19-24	25-44	45-64	65+
<b>1999-2000</b>	<b>386</b>	<b>2857</b>	<b>4933</b>	<b>997</b>	<b>12</b>
<b>2000-2001</b>	<b>342</b>	<b>2745</b>	<b>4363</b>	<b>957</b>	<b>20</b>
<b>2001-2002</b>	<b>300</b>	<b>3471</b>	<b>5277</b>	<b>1121</b>	<b>31</b>
<b>2002-2003</b>	<b>301</b>	<b>4165</b>	<b>6219</b>	<b>1397</b>	<b>49</b>
<b>2003-2004</b>	<b>297</b>	<b>4112</b>	<b>5638</b>	<b>1363</b>	<b>67</b>
<b>2004-2005</b>	<b>324</b>	<b>4235</b>	<b>5271</b>	<b>1261</b>	<b>44</b>

Chart 3

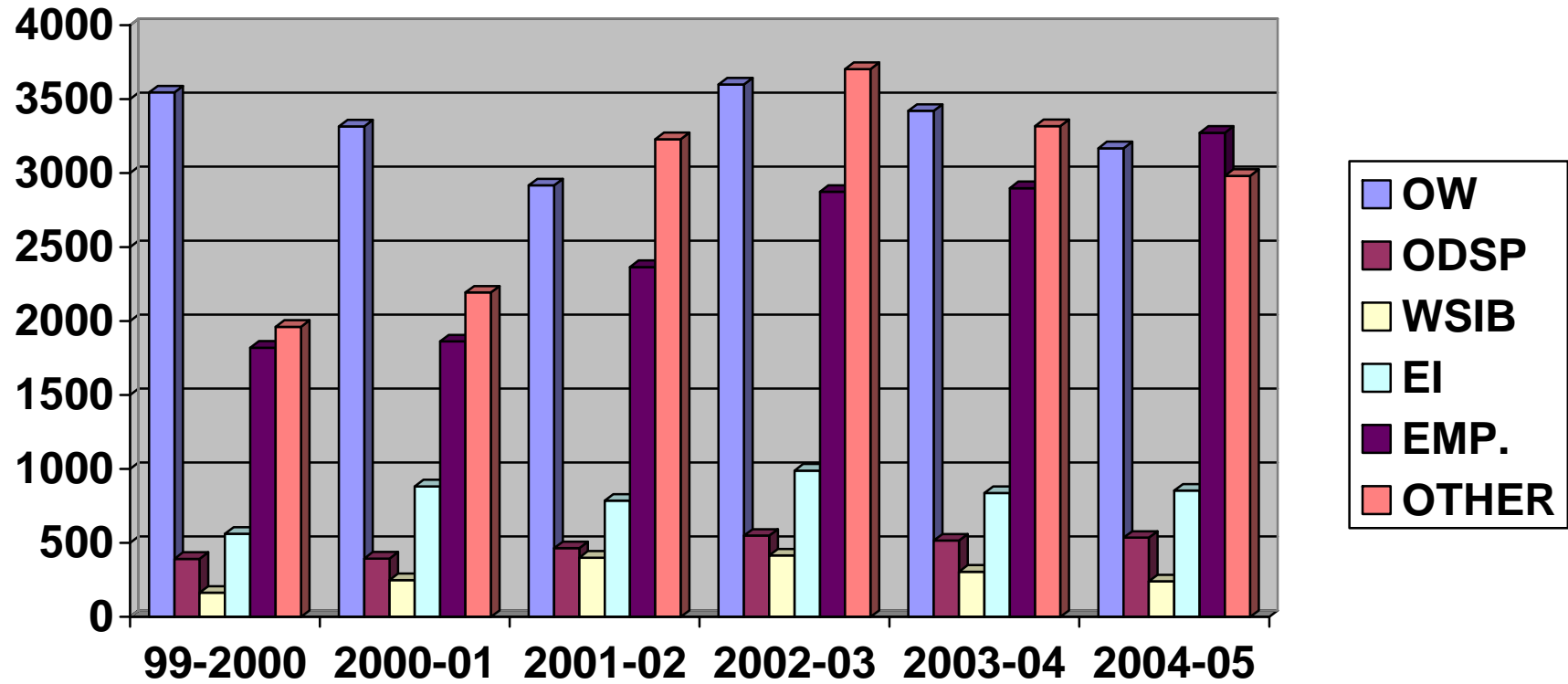
**LBS 1 - 5  
GOALS**



	<b>EMPLOYMENT</b>	<b>EDUCATION</b>	<b>INDEPENDENCE</b>
<b>1999-2000</b>	<b>1706</b>	<b>6577</b>	<b>785</b>
<b>2000-2001</b>	<b>1642</b>	<b>6205</b>	<b>575</b>
<b>2001-2002</b>	<b>1171</b>	<b>6522</b>	<b>508</b>
<b>2002-2003</b>	<b>1621</b>	<b>7818</b>	<b>563</b>
<b>2003-2004</b>	<b>1881</b>	<b>7284</b>	<b>497</b>
<b>2004-2005</b>	<b>1843</b>	<b>7803</b>	<b>409</b>

Chart 4

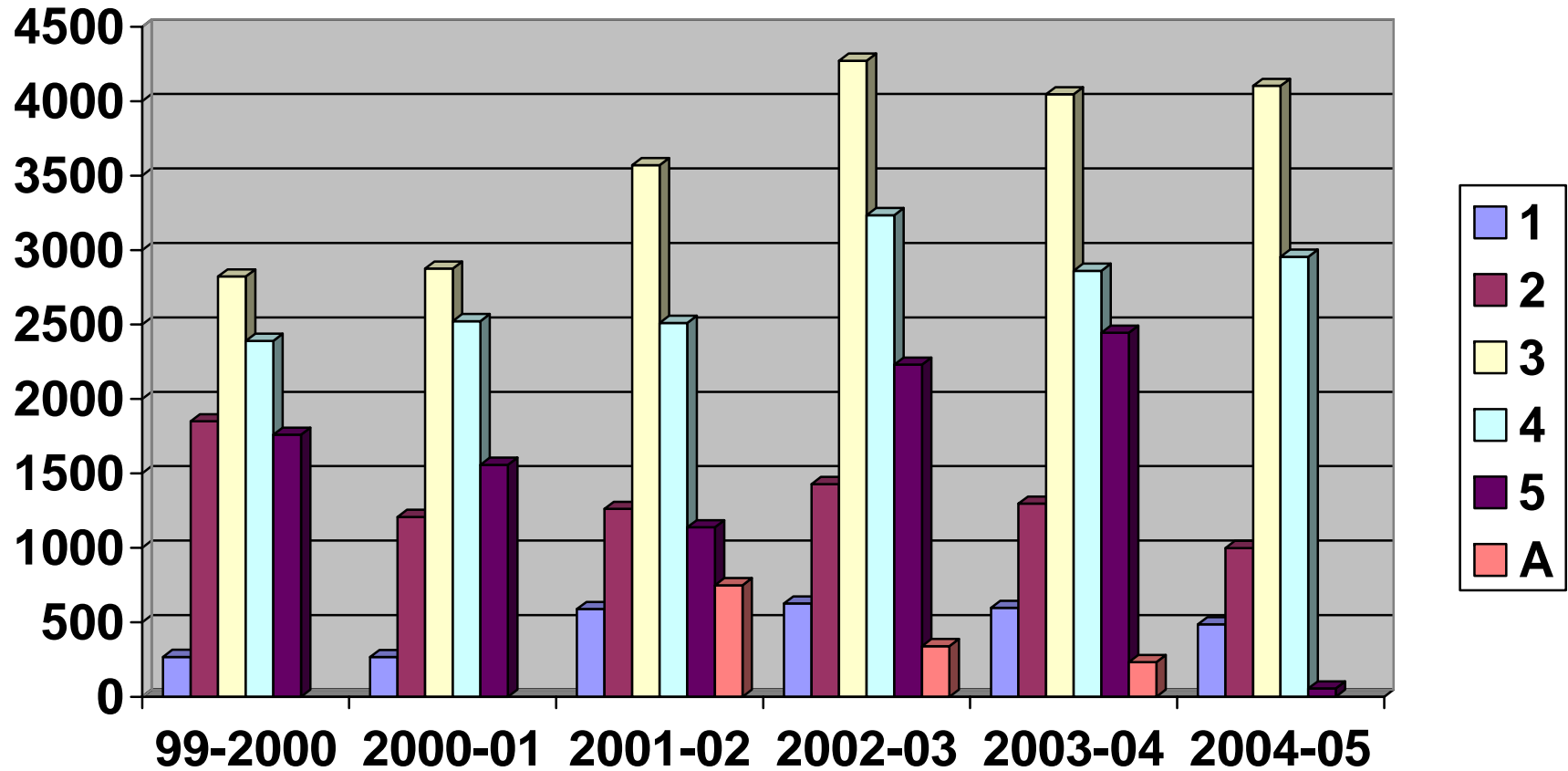
### LBS 1 - 5 SOURCE OF INCOME



	OW	ODSP	WSIB	EI	EMP	OTHER
1999-2000	3546	392	163	562	1820	1962
2000-2001	3316	394	249	883	1862	2193
2001-2002	2917	464	400	785	2365	3230
2002-2003	3600	549	415	989	2874	3704
2003-2004	3422	515	306	837	2899	3318
2004-2005	3169	535	240	854	3273	2982

Chart 5

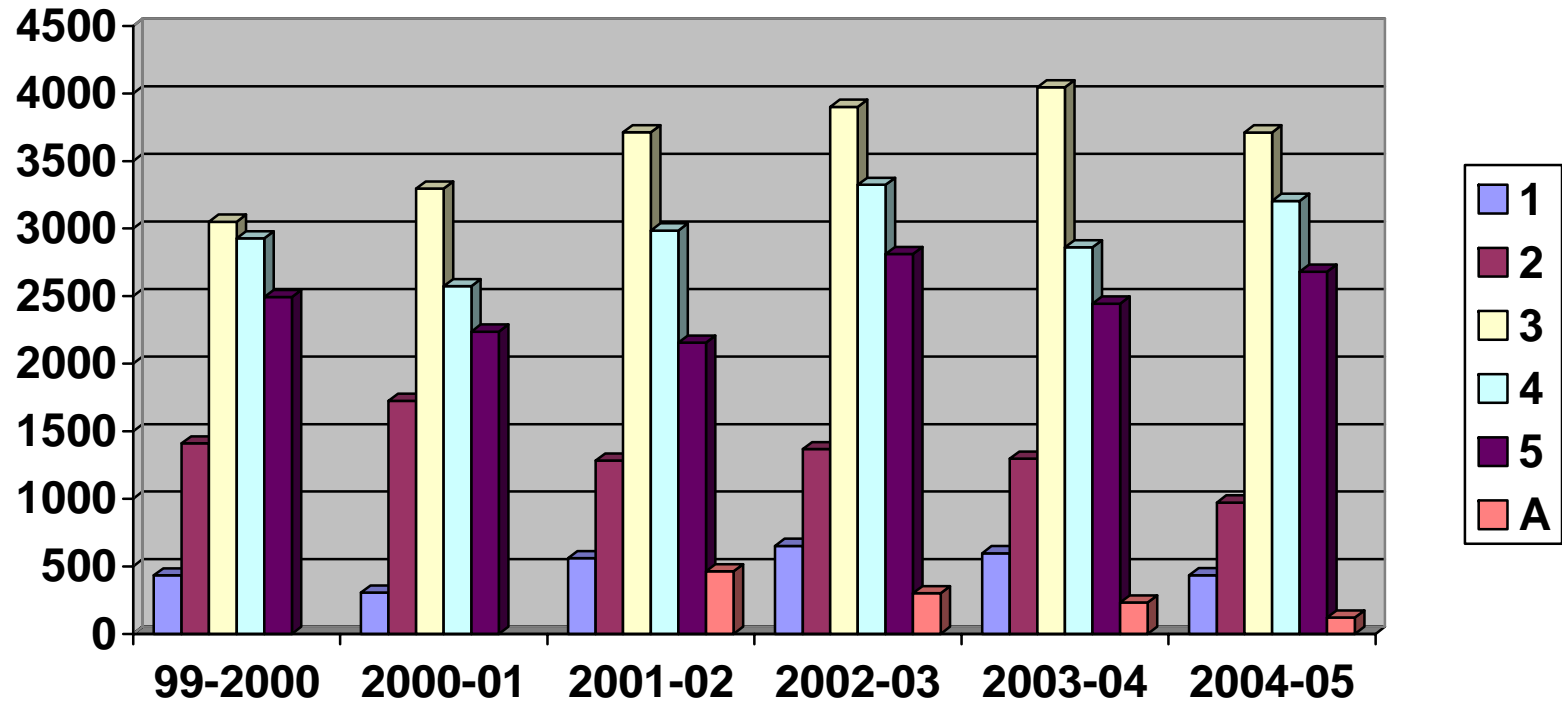
**LBS 1 - 5  
INTAKE ASSESSMENT PLACEMENT**



	1	2	3	4	5	A
<b>1999-2000</b>	<b>267</b>	<b>1849</b>	<b>2823</b>	<b>2390</b>	<b>1759</b>	
<b>2000-2001</b>	<b>266</b>	<b>1207</b>	<b>2875</b>	<b>2523</b>	<b>1557</b>	
<b>2001-2002</b>	<b>589</b>	<b>1261</b>	<b>3570</b>	<b>2511</b>	<b>1138</b>	<b>748</b>
<b>2002-2003</b>	<b>626</b>	<b>1428</b>	<b>4272</b>	<b>3234</b>	<b>2231</b>	<b>340</b>
<b>2003-2004</b>	<b>597</b>	<b>1296</b>	<b>4046</b>	<b>2861</b>	<b>2445</b>	<b>232</b>
<b>2004-2005</b>	<b>486</b>	<b>998</b>	<b>4103</b>	<b>2955</b>	<b>2213</b>	<b>55</b>

Chart 6

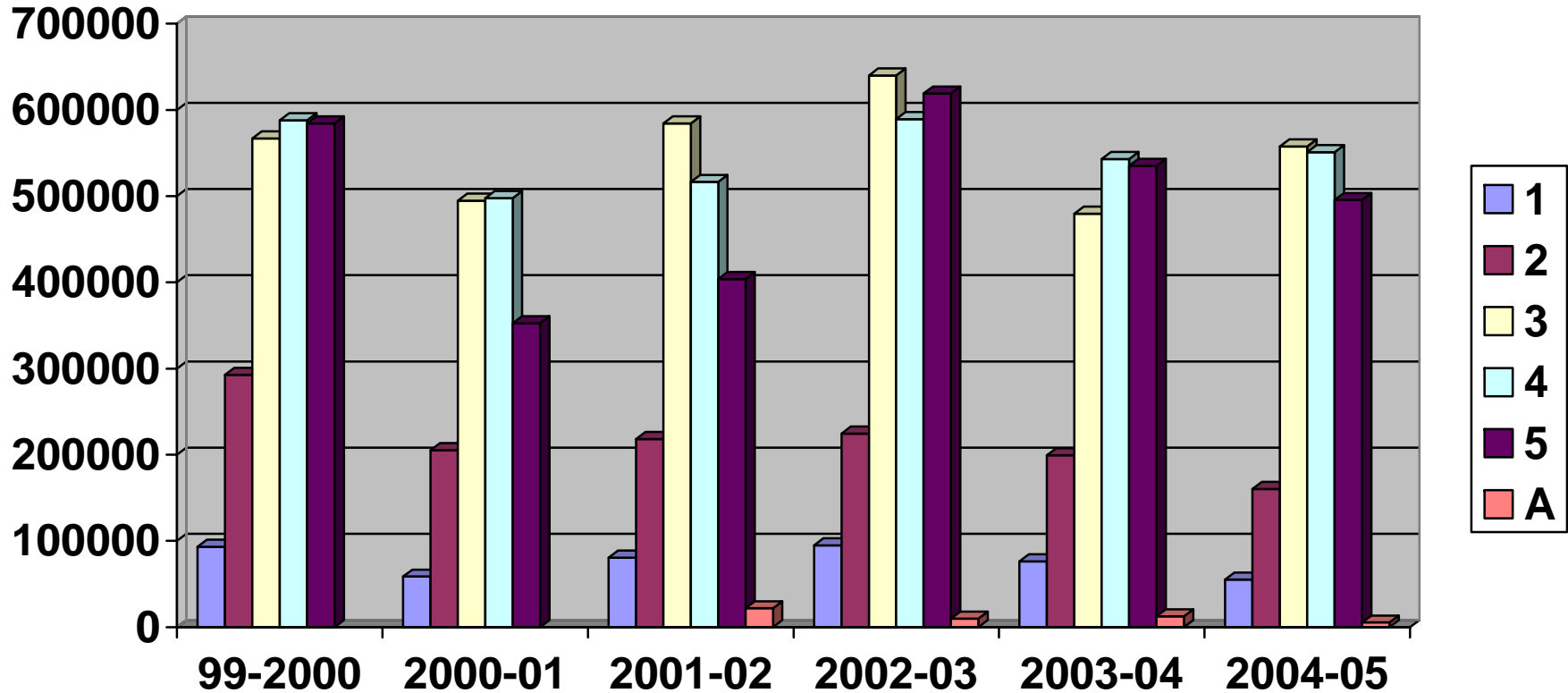
**NUMBER OF STUDENTS BY LBS LEVEL**



	<b>1</b>	<b>2</b>	<b>3</b>	<b>4</b>	<b>5</b>	<b>A</b>
<b>1999-2000</b>	<b>433</b>	<b>1410</b>	<b>3051</b>	<b>2928</b>	<b>2493</b>	
<b>2000-2001</b>	<b>305</b>	<b>1725</b>	<b>3296</b>	<b>2574</b>	<b>2237</b>	
<b>2001-2002</b>	<b>560</b>	<b>1283</b>	<b>3713</b>	<b>2985</b>	<b>2155</b>	<b>463</b>
<b>2002-2003</b>	<b>651</b>	<b>1367</b>	<b>3901</b>	<b>3324</b>	<b>2812</b>	<b>301</b>
<b>2003-2004</b>	<b>597</b>	<b>1296</b>	<b>4046</b>	<b>2861</b>	<b>2445</b>	<b>232</b>
<b>2004-2005</b>	<b>434</b>	<b>972</b>	<b>3712</b>	<b>3205</b>	<b>2681</b>	<b>121</b>

Chart 7

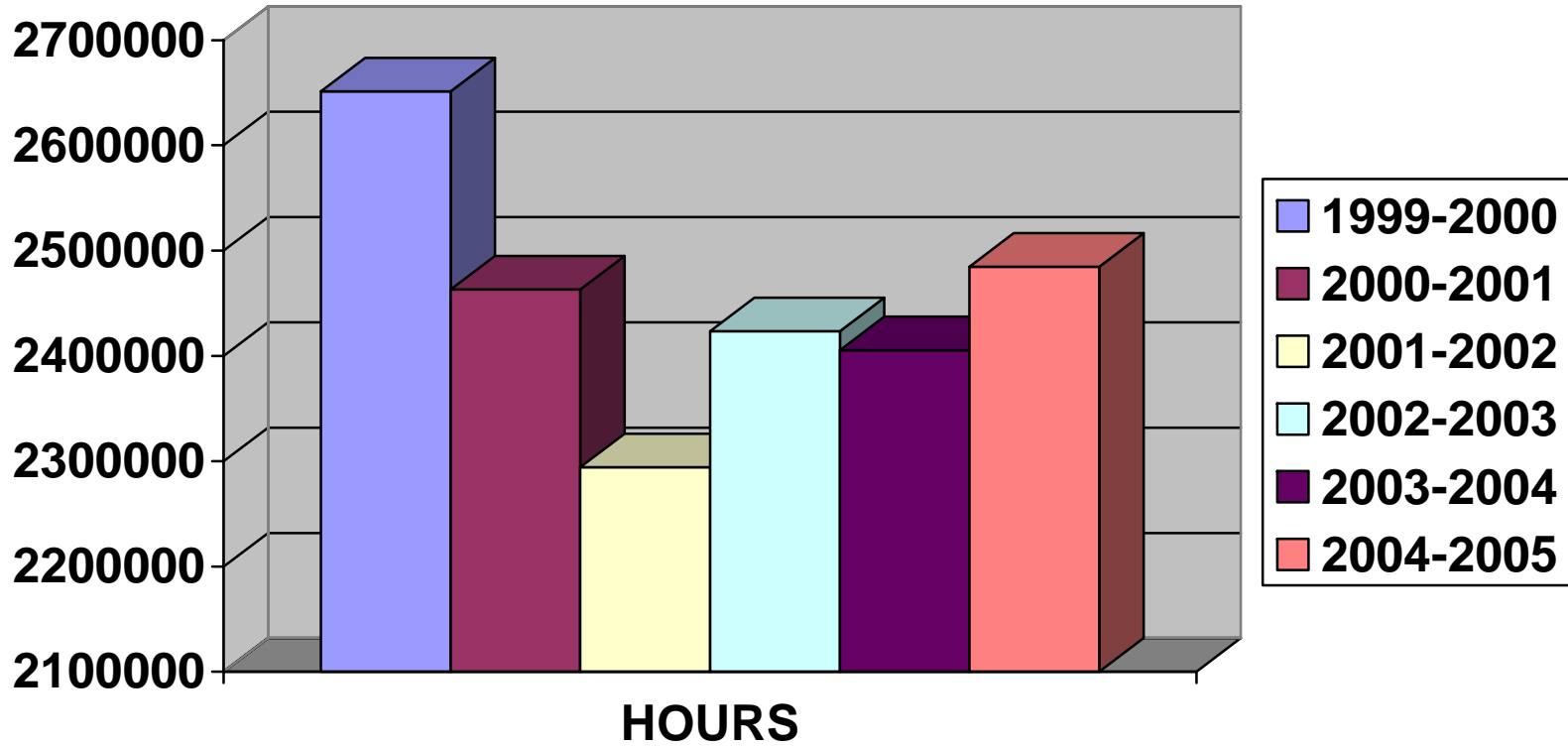
### CONTACT HOURS BY LBS LEVEL



	1	2	3	4	5	A
<b>1999-2000</b>	<b>93273</b>	<b>292582</b>	<b>566788</b>	<b>588026</b>	<b>584232</b>	
<b>2000-2001</b>	<b>58579</b>	<b>205343</b>	<b>494588</b>	<b>497658</b>	<b>352538</b>	
<b>2001-2002</b>	<b>80539</b>	<b>218172</b>	<b>584416</b>	<b>516379</b>	<b>403779</b>	<b>21853</b>
<b>2002-2003</b>	<b>95785</b>	<b>227645</b>	<b>622073</b>	<b>573083</b>	<b>464906</b>	<b>9717</b>
<b>2003-2004</b>	<b>76341</b>	<b>199333</b>	<b>479400</b>	<b>543135</b>	<b>535090</b>	<b>12352</b>
<b>2004-2005</b>	<b>55085</b>	<b>160187</b>	<b>557485</b>	<b>550921</b>	<b>495545</b>	<b>5328</b>

Chart 8

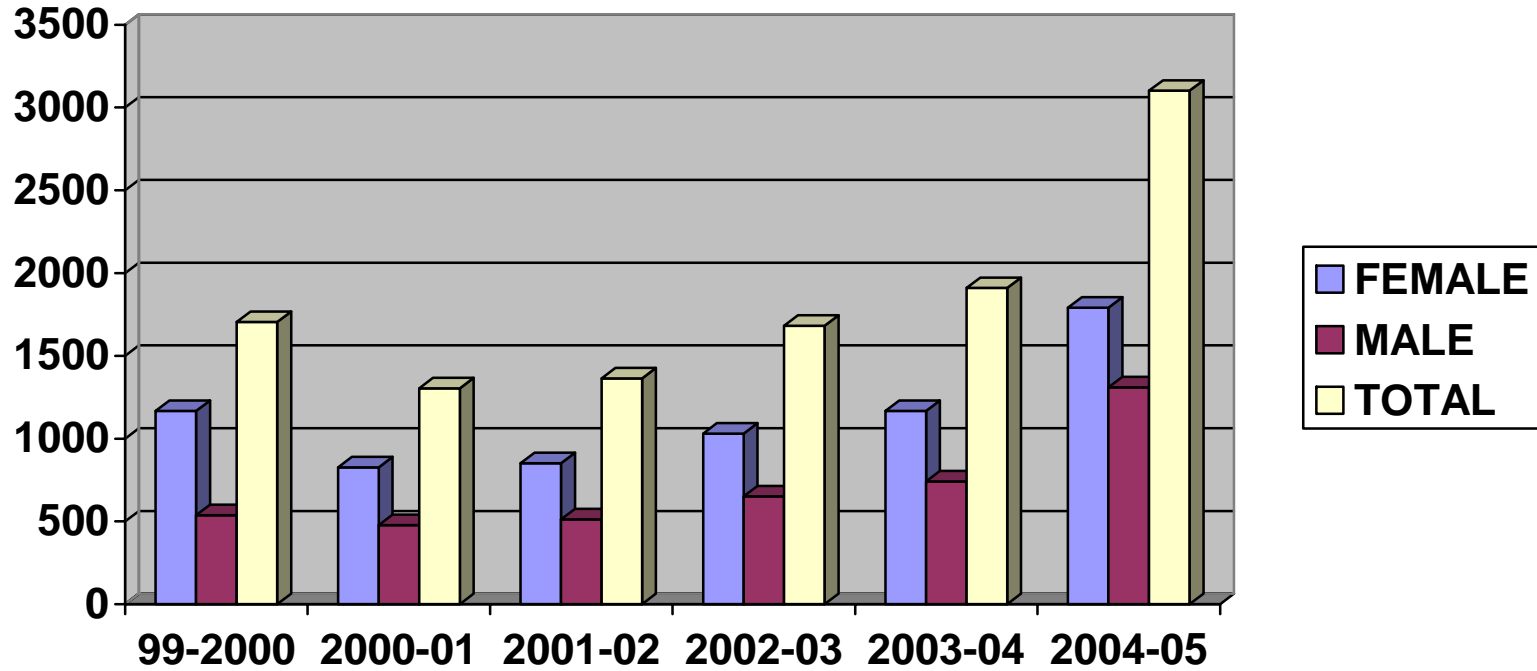
### TOTAL CONTACT HOURS DELIVERED



	HOURS
1999 – 2000	2,651,179
2000 – 2001	2,463,218
2001 – 2002	2,294,324
2002 – 2003	2,423,469
2003 – 2004	2,405,549
2004 - 2005	2,484,865

Chart 9

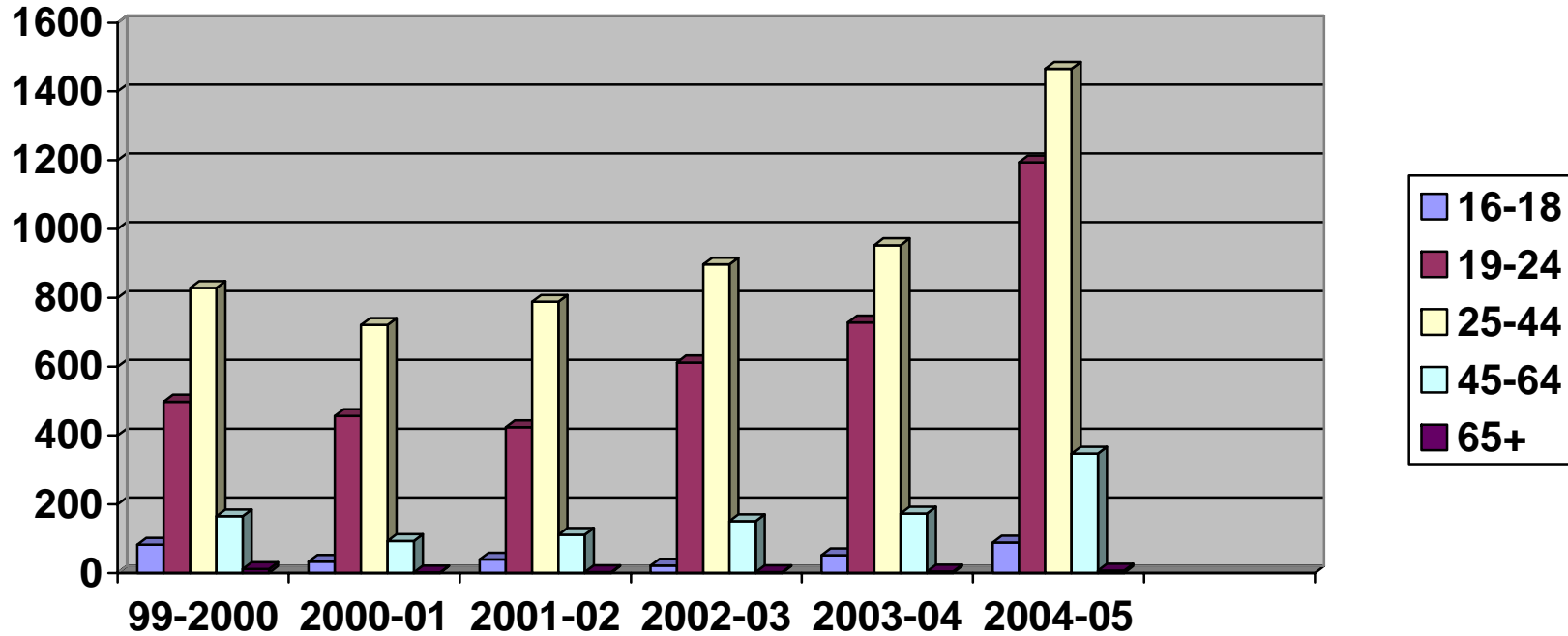
**OBS IV INTAKE INFORMATION**  
**NUMBER OF STUDENTS**



	<b>FEMALE</b>	<b>MALE</b>	<b>TOTAL</b>
<b>1999-2000</b>	<b>1168</b>	<b>537</b>	<b>1705</b>
<b>2000-2001</b>	<b>826</b>	<b>478</b>	<b>1304</b>
<b>2001-2002</b>	<b>852</b>	<b>512</b>	<b>1364</b>
<b>2002-2003</b>	<b>1031</b>	<b>651</b>	<b>1682</b>
<b>2003-2004</b>	<b>1168</b>	<b>742</b>	<b>1910</b>
<b>2004-2005</b>	<b>1792</b>	<b>1310</b>	<b>3102</b>

Chart 10

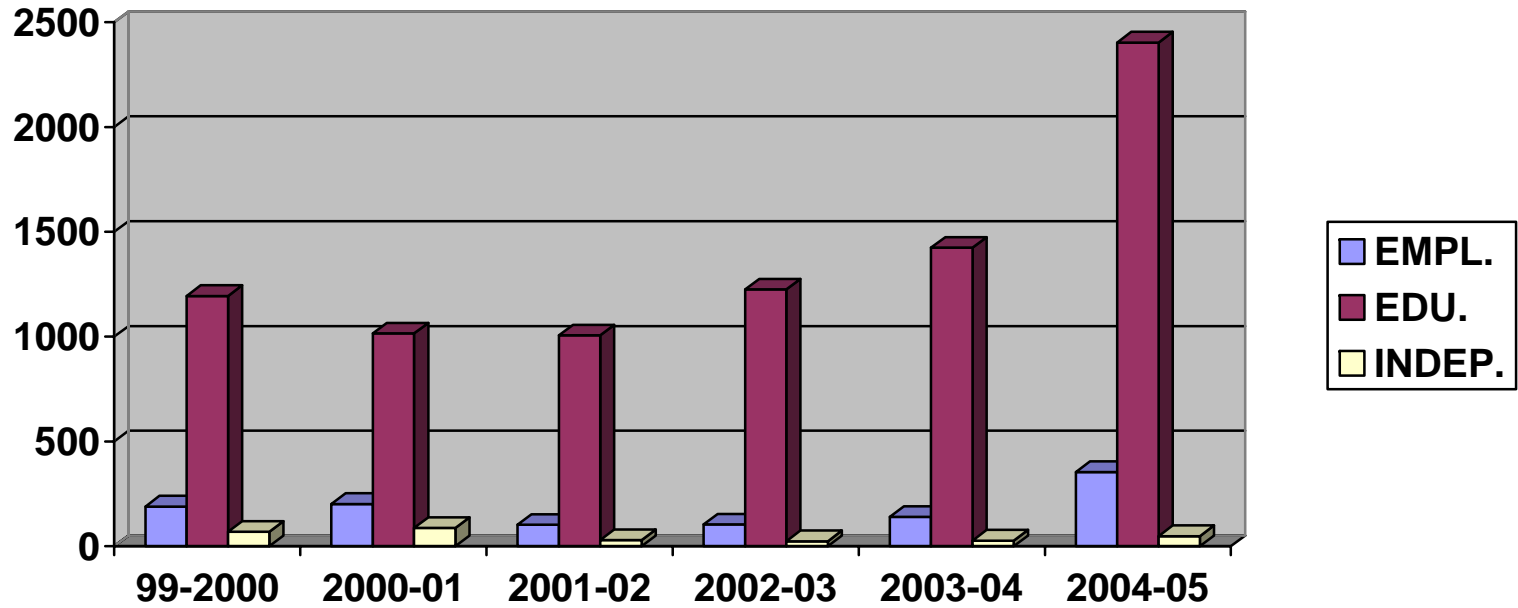
**OBS IV**  
**AGE RANGES**



	16-18	19-24	25-44	45-64	65+
1999-2000	82	498	829	165	11
2000-2001	33	456	721	93	1
2001-2002	39	424	788	111	2
2002-2003	21	612	897	150	2
2003-2004	52	728	953	173	4
2004-2005	88	1194	1466	347	7

Chart 11

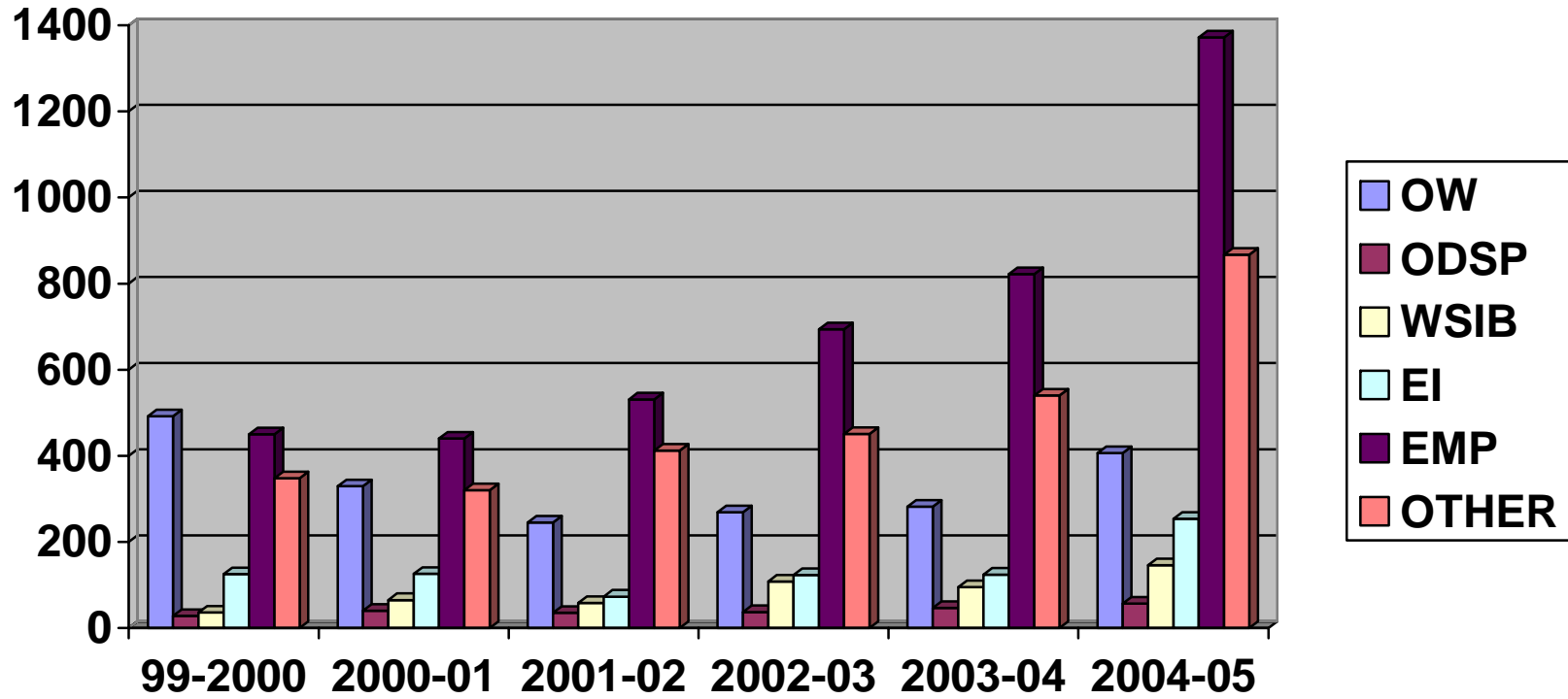
**OBS IV**  
**GOALS**



	<b>EMPLOYMENT</b>	<b>EDUCATION</b>	<b>INDEPENDENCE</b>
<b>1999-2000</b>	<b>190</b>	<b>1194</b>	<b>69</b>
<b>2000-2001</b>	<b>202</b>	<b>1015</b>	<b>87</b>
<b>2001-2002</b>	<b>102</b>	<b>1006</b>	<b>29</b>
<b>2002-2003</b>	<b>104</b>	<b>1225</b>	<b>24</b>
<b>2003-2004</b>	<b>140</b>	<b>1424</b>	<b>27</b>
<b>2004-2005</b>	<b>354</b>	<b>2403</b>	<b>48</b>

Chart 12

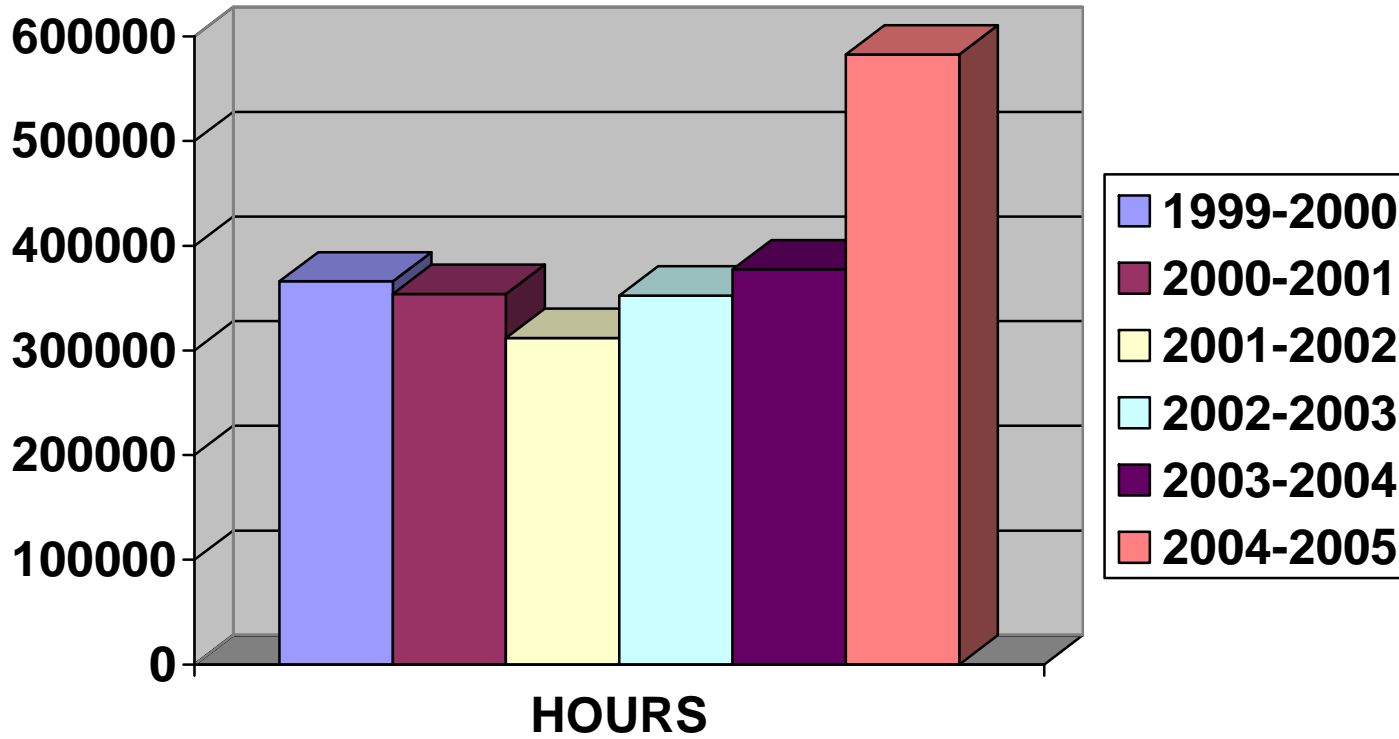
**OBS IV**  
**SOURCE OF INCOME**



	<b>OW</b>	<b>ODSP</b>	<b>WSIB</b>	<b>EI</b>	<b>EMP</b>	<b>OTHER</b>
<b>1999-2000</b>	<b>492</b>	<b>28</b>	<b>36</b>	<b>125</b>	<b>450</b>	<b>348</b>
<b>2000-2001</b>	<b>329</b>	<b>40</b>	<b>65</b>	<b>126</b>	<b>440</b>	<b>320</b>
<b>2001-2002</b>	<b>245</b>	<b>35</b>	<b>58</b>	<b>73</b>	<b>531</b>	<b>412</b>
<b>2002-2003</b>	<b>269</b>	<b>37</b>	<b>108</b>	<b>123</b>	<b>694</b>	<b>451</b>
<b>2003-2004</b>	<b>282</b>	<b>47</b>	<b>95</b>	<b>124</b>	<b>822</b>	<b>540</b>
<b>2004-2005</b>	<b>406</b>	<b>57</b>	<b>146</b>	<b>254</b>	<b>1372</b>	<b>867</b>

Chart 13

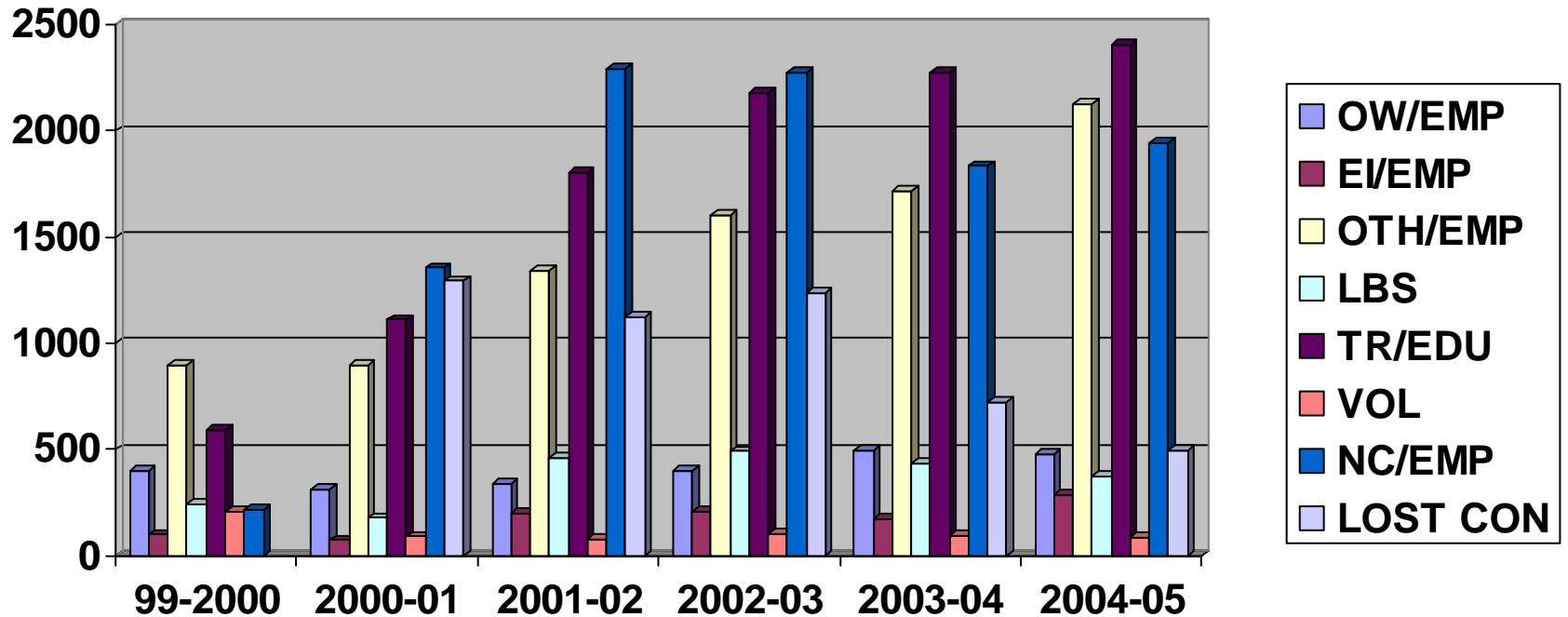
**OBS IV**  
**TOTAL CONTACT HOURS DELIVERED**



	<b>HOURS</b>
<b>1999 – 2000</b>	<b>365,953</b>
<b>2000 – 2001</b>	<b>353,960</b>
<b>2001 – 2002</b>	<b>311,999</b>
<b>2002 – 2003</b>	<b>352,426</b>
<b>2003 – 2004</b>	<b>377,411</b>
<b>2004 - 2005</b>	<b>582,822</b>

Chart 14

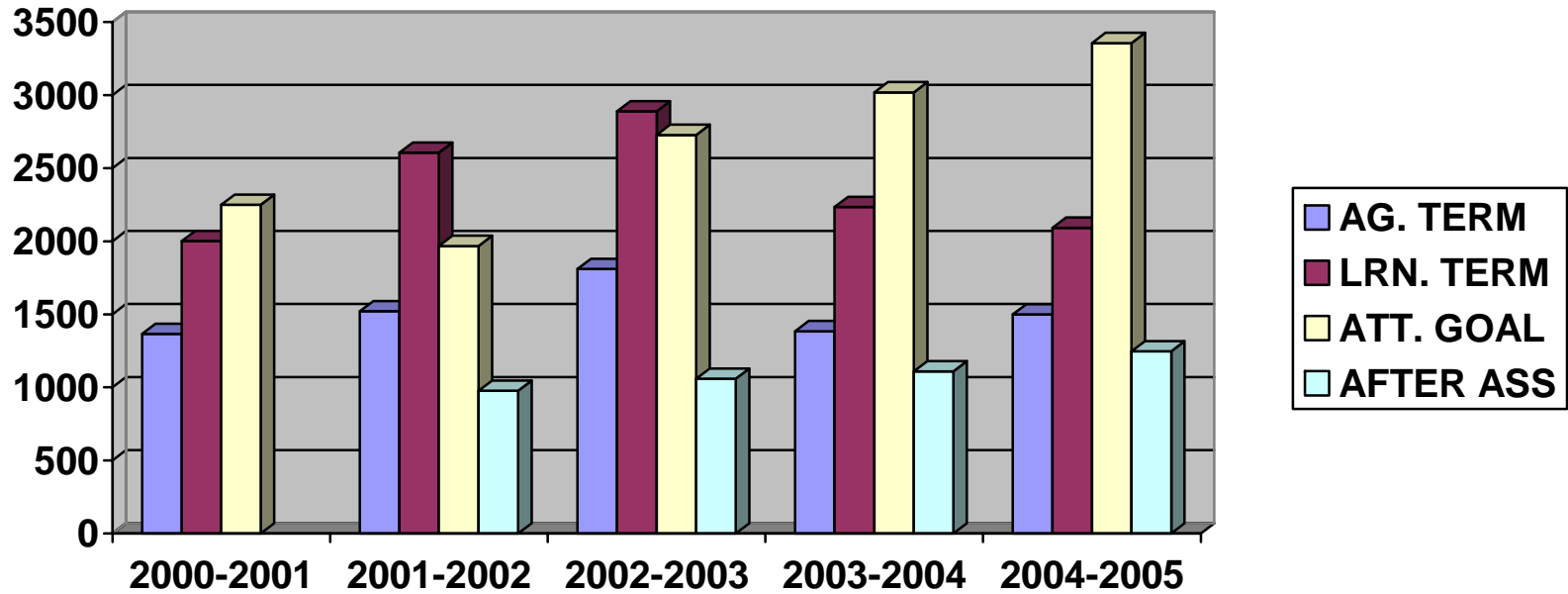
**YEAR END PROVINCIAL LBS EXIT STATS**  
**SOURCE OF INCOME AT EXIT**



	<b>OW</b>	<b>EI</b>	<b>OTH</b>	<b>LBS</b>	<b>TR/EDU</b>	<b>VOL</b>	<b>NC/EMP</b>	<b>LOST</b>
<b>1999-2000</b>	<b>399</b>	<b>97</b>	<b>896</b>	<b>241</b>	<b>593</b>	<b>205</b>	<b>218</b>	
<b>2000-2001</b>	<b>313</b>	<b>71</b>	<b>898</b>	<b>175</b>	<b>1110</b>	<b>89</b>	<b>1355</b>	<b>1293</b>
<b>2001-2002</b>	<b>338</b>	<b>198</b>	<b>1342</b>	<b>459</b>	<b>1802</b>	<b>73</b>	<b>2294</b>	<b>1122</b>
<b>2002-2003</b>	<b>396</b>	<b>207</b>	<b>1604</b>	<b>489</b>	<b>2178</b>	<b>100</b>	<b>2276</b>	<b>1236</b>
<b>2003-2004</b>	<b>497</b>	<b>171</b>	<b>1718</b>	<b>436</b>	<b>2276</b>	<b>94</b>	<b>1833</b>	<b>724</b>
<b>2004-2005</b>	<b>477</b>	<b>288</b>	<b>2128</b>	<b>374</b>	<b>2407</b>	<b>83</b>	<b>1946</b>	<b>493</b>

Chart 15

### REASON FOR LEAVING



	<b>AGEN. TERM.</b>	<b>LEARN. TERM.</b>	<b>ATTAND GOAL</b>	<b>AFTER ASSESS.</b>
<b>1999-2000</b>				
<b>2000-2001</b>	<b>1365</b>	<b>2001</b>	<b>2249</b>	
<b>2001-2002</b>	<b>1521</b>	<b>2606</b>	<b>1967</b>	<b>977</b>
<b>2002-2003</b>	<b>1810</b>	<b>2889</b>	<b>2728</b>	<b>1059</b>
<b>2003-2004</b>	<b>1384</b>	<b>2237</b>	<b>3020</b>	<b>1109</b>
<b>2004-2005</b>	<b>1499</b>	<b>2093</b>	<b>3357</b>	<b>1247</b>